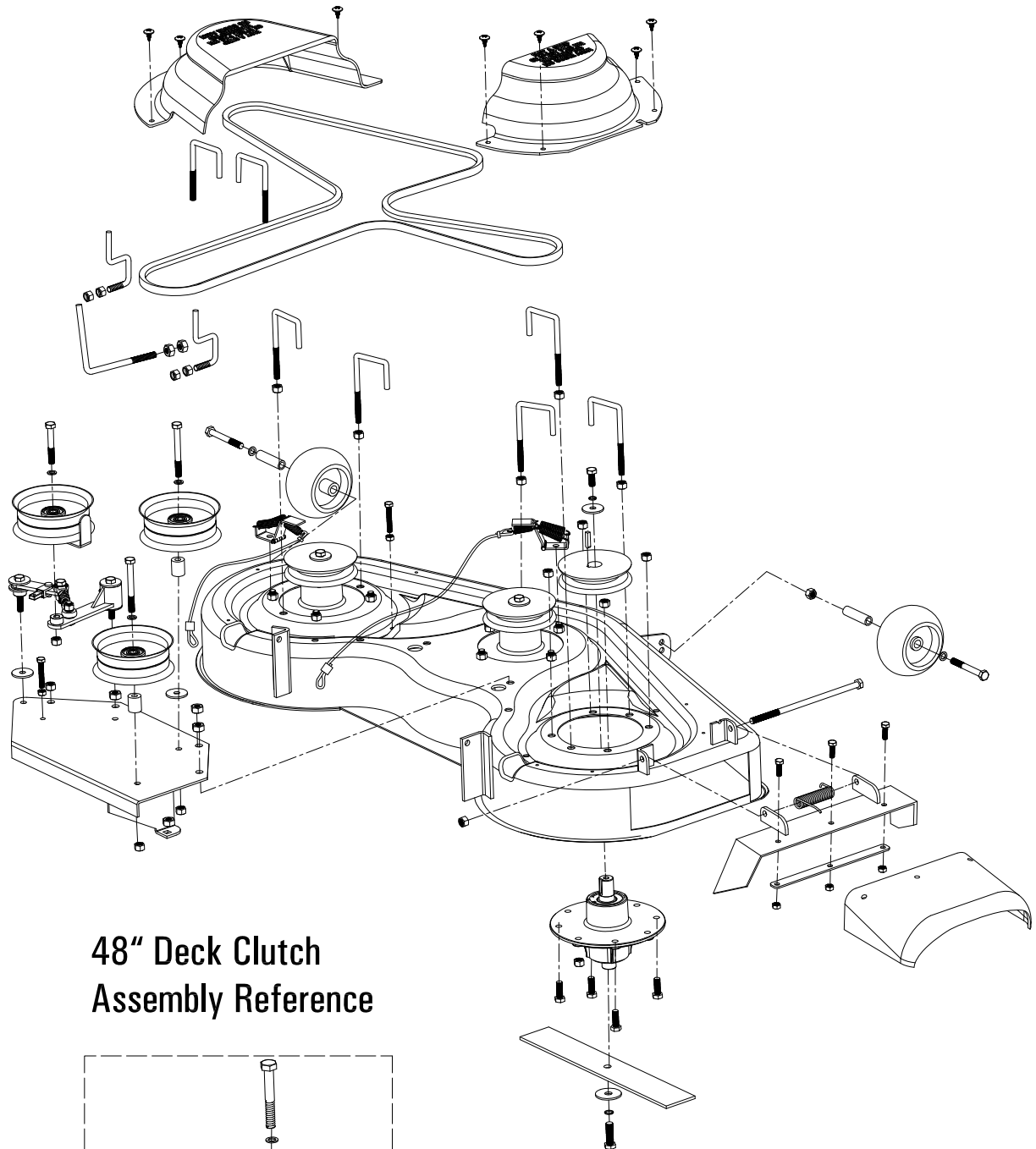


48ZS

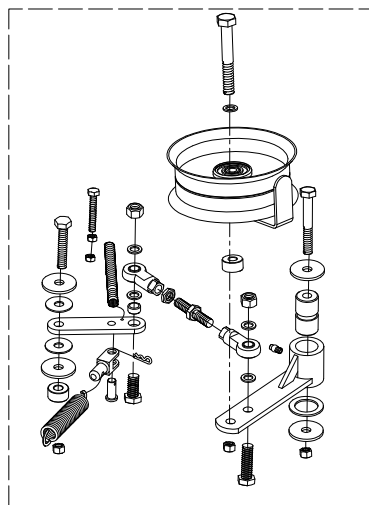
48" STANLEY Zero Turn Riding Mower

Kawasaki FR600V Engine

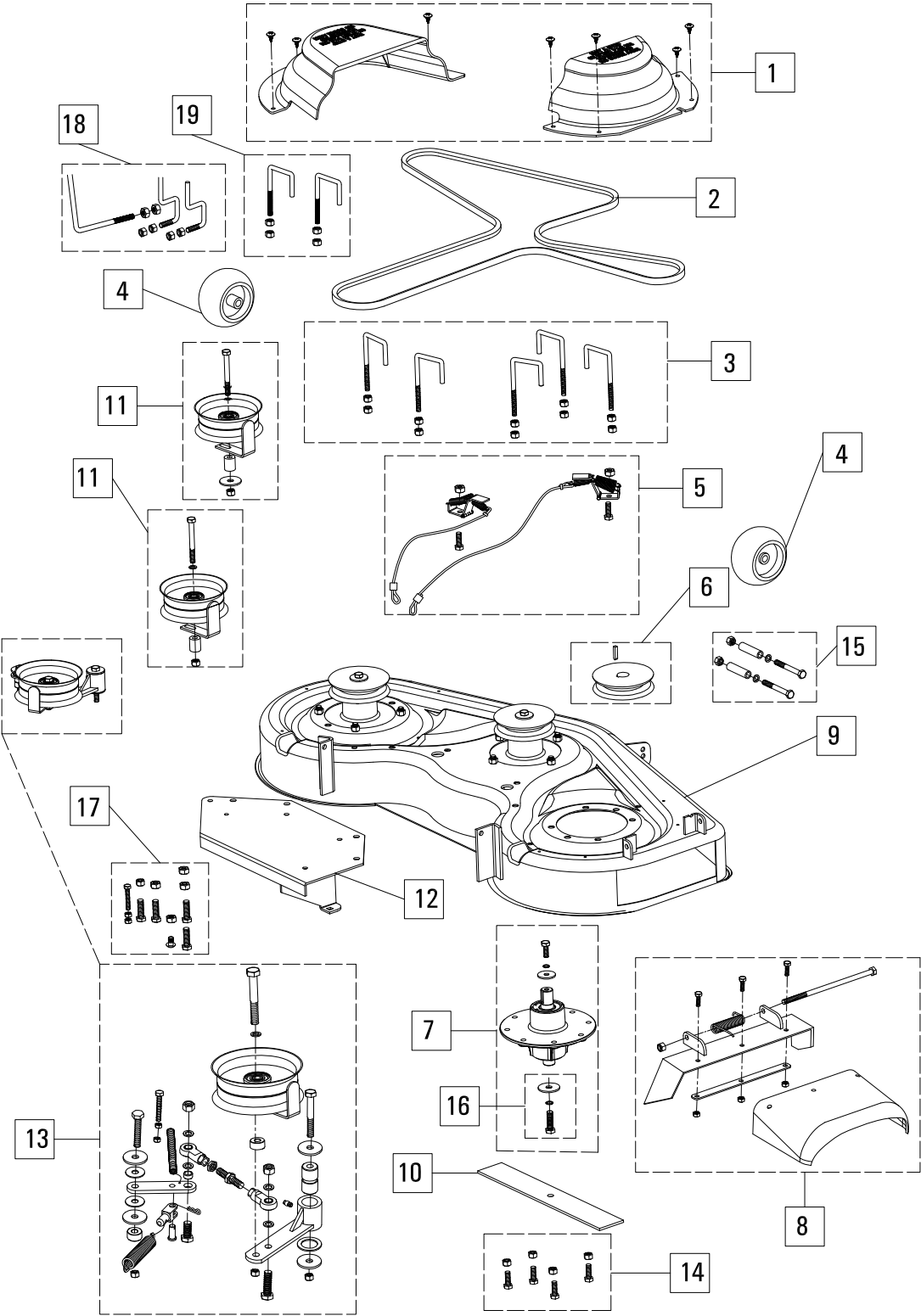
48" Deck Parts Assembly Reference



48" Deck Clutch Assembly Reference



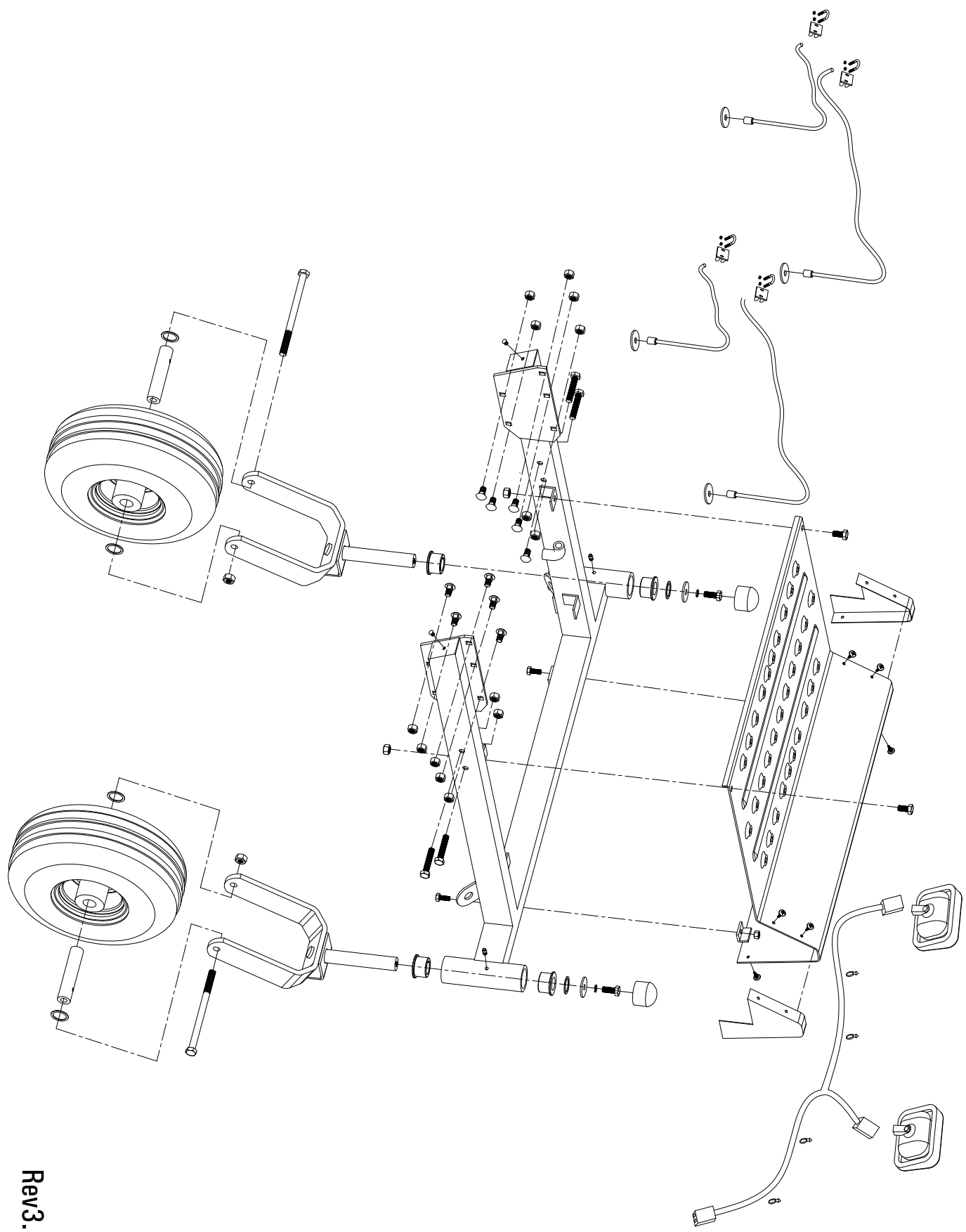
48" Deck Parts Diagram



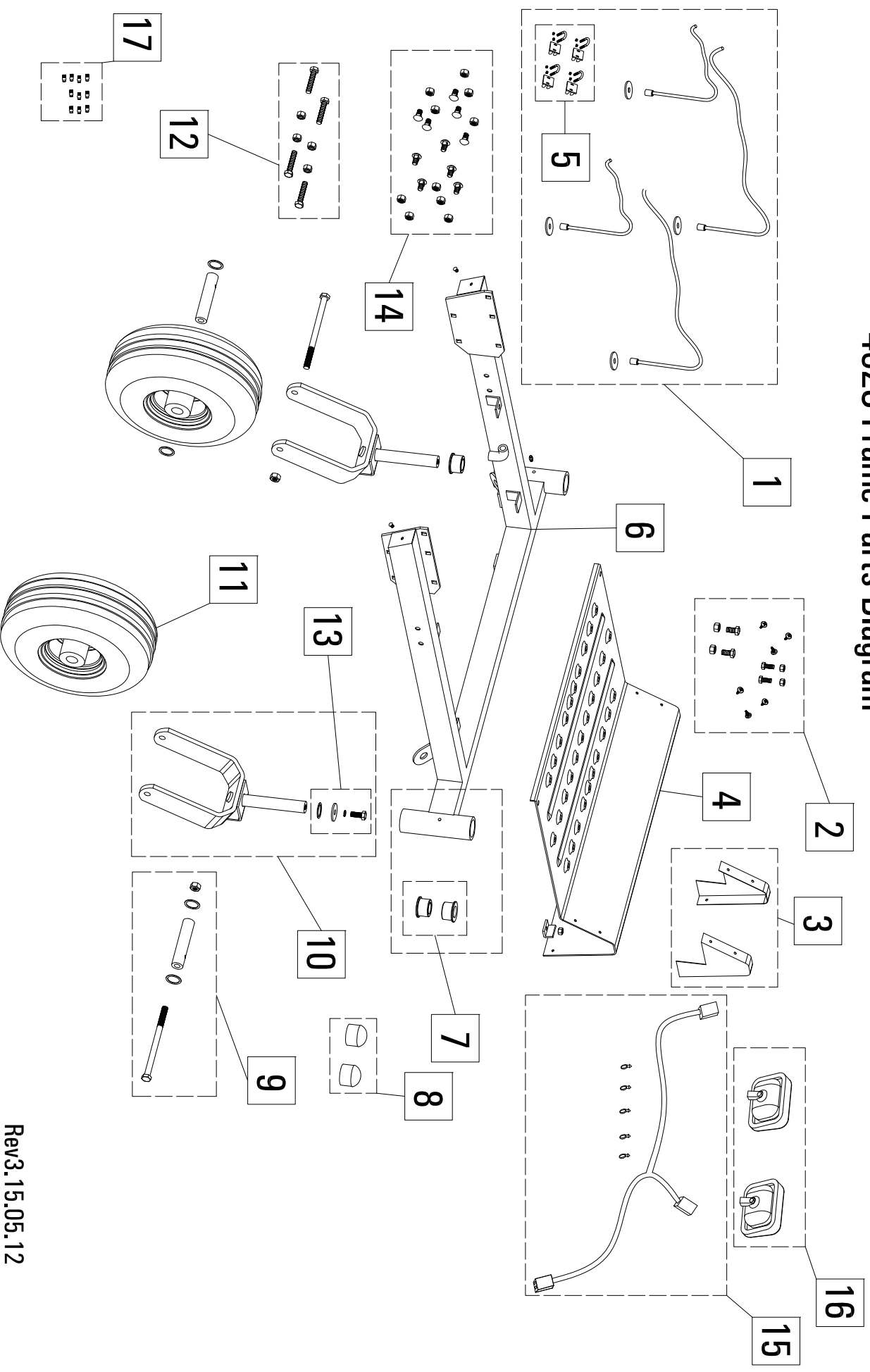
48ZS" Deck Parts Diagram Key

Item #	Gxi Part Number	Description
1	SP11-000083	Pulley guard, 48Z, left and right black plastic guard, screws included
2	M10-000822	48Z Deck Belt - 1360
3	SP11-000009	Belt retainer kit, Z, belt retainers and hardware
4	M10-000458	Scalping wheel, 5" plastic..
5	SP11-000035	Spindle brake kit, 48Z, left and center brakes, springs, cables, hardware..
6	SP11-000084	Pulley, blade spindle, 48Z, cast, black, includes key..
7	SP11-000015	Spindle assembly, aluminum, 48Z, fully assembled, non-servicable, includes pulley retaining hardware and blade retaining hardware..
8	SP11-000057	Discharge chute assembly, 48Z
9	M10-000925	48" Deck Assembly - Yellow
10	SP12-000184	Blade, set of 3, 48Z
11	SP11-000085	Idle pulley, 5", includes bolt, locking nut, belt retainer, spacer, and reinforcement washer for necessary applications
12	M10-000337	48Z Deck Clutch Plate - Yellow
13	SP11-000058	Clutch assembly, 48Z, complete clutch mechanism with all hardware and springs...
14	SP11-000086	Hardware kit, Z, W, spindle fastening, set of 4 bolts and nyloc nuts
15	SP11-000087	Hardware kit, scalping wheel, set of 2 bolts, washers, locking nuts, and bushings.....
16	SP11-000088	Hardware kit, 48Z, blade attachment, set of 3 blade mounting bolts, washers, and lock washers..
17	SP11-000089	Hardware kit, 48Z, clutch plate assembly, includes 5 bolts and locking nuts for attaching clutch plate to deck.
18	SP12-000185	Belt retainer kit, Z, engine pulley, rear retainer, 2 side retainers with hardware
19	SP12-000186	Belt retainer kit, Z, intermediate between engine and deck, 2 belt retainers and hardware

48ZS Frame Diagram-Assembly Reference

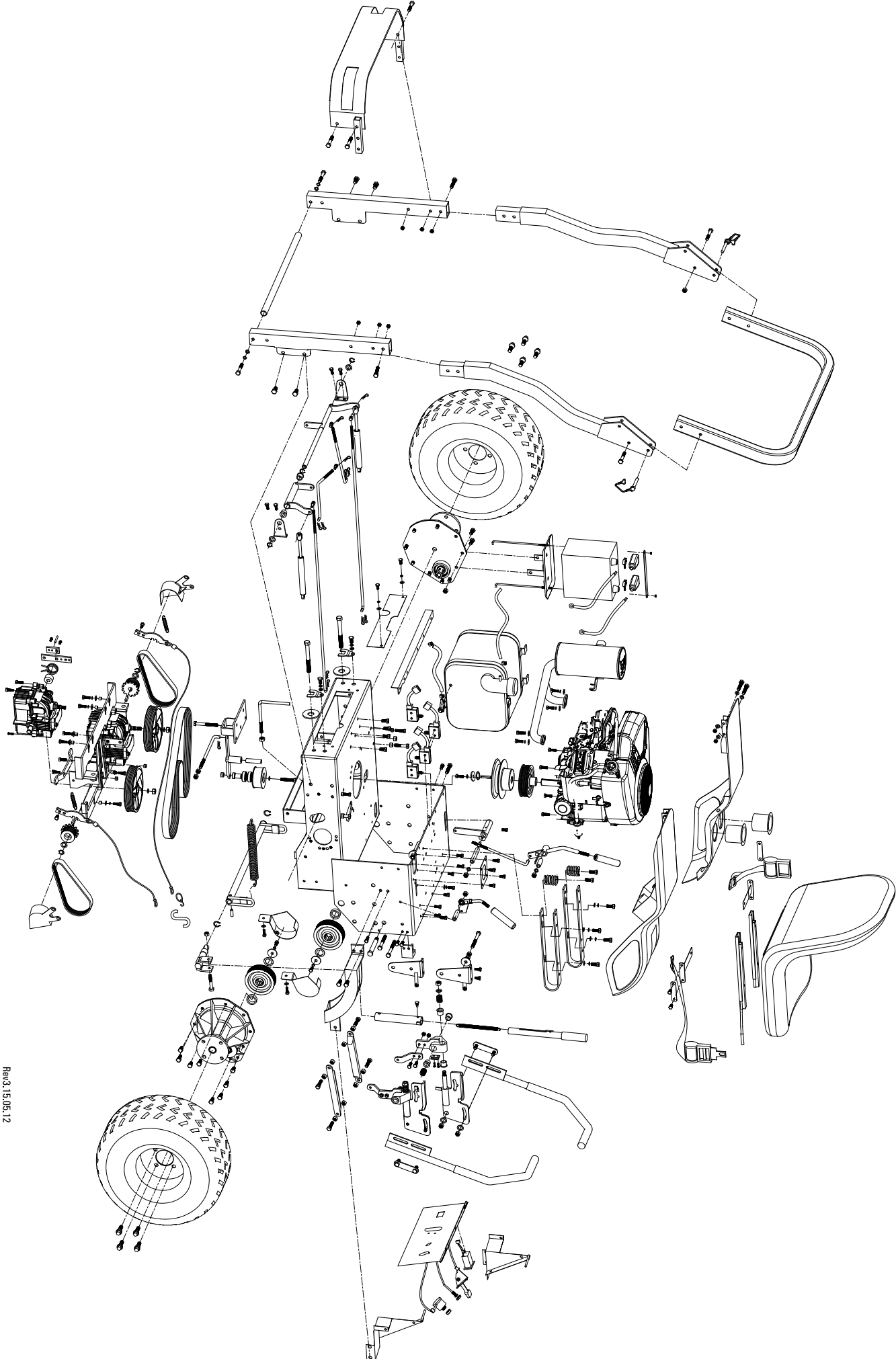


48ZS Frame Parts Diagram

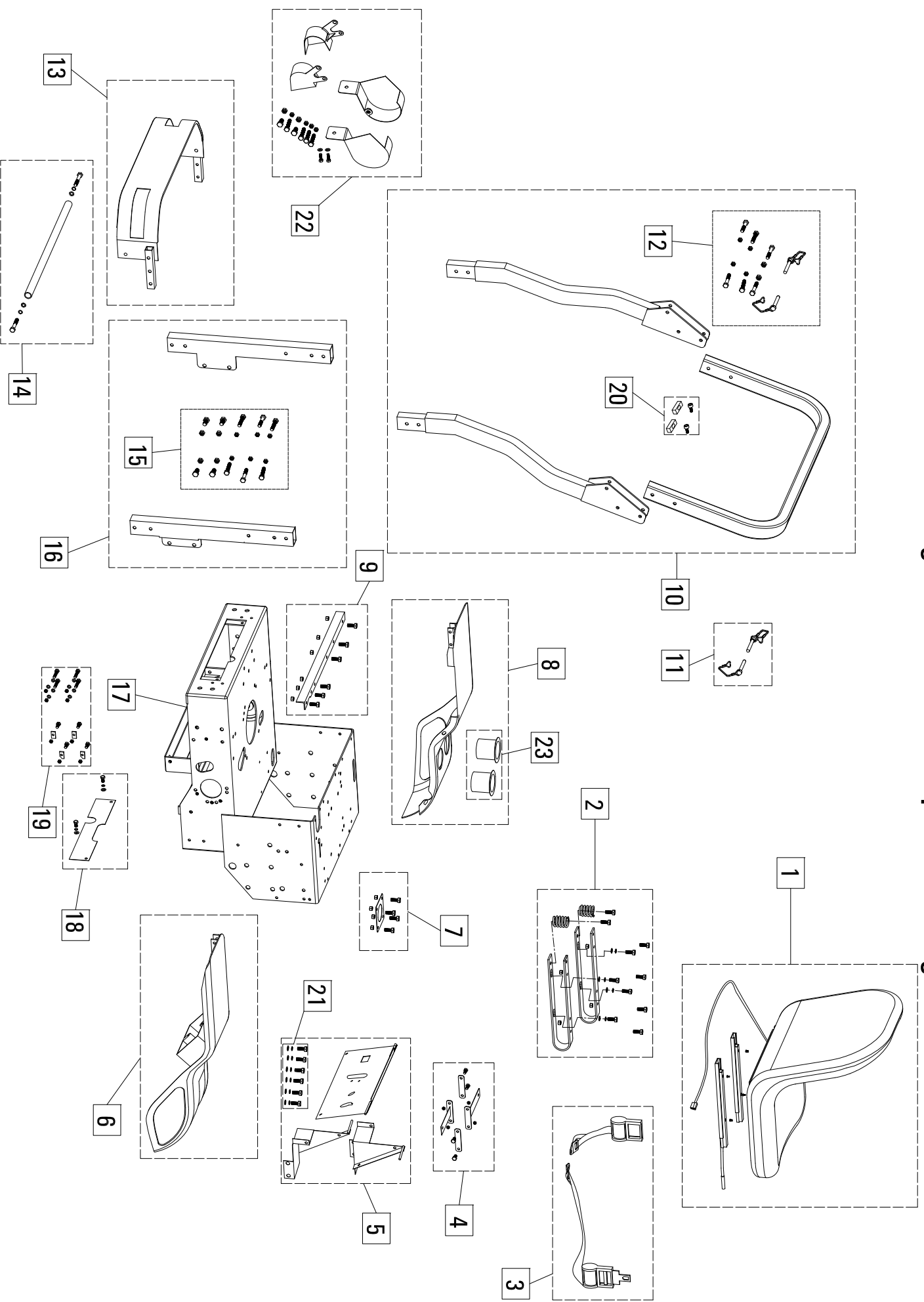


48ZS" Frame Parts Diagram Key		
Item #	Gxi Part Number	Description
1	SP11-000039	Deck cable kit, 48Z, all 4 subassembled cables, includes cable clamps
2	SP11-000132	Hardware kit, floorboard, 48Z, includes bolts to fasten floorboard to frame and screws to mount floorboard end caps..
3	SP11-000133	Floorboard end caps, set, 48Z..
4	SP12-000205	Floorboard, 48ZS, with headlight openings, includes label..
5	SP11-000135	Hardware kit, Z, cable clamps to fasten deck height cables..
6	SP12-000206	Frame, front, 48ZS, black, includes brass wheel bushings, and grease fittings
7	SP12-000187	Bushing, brass, front wheel caster, Z, set of 4
8	SP11-000137	Bearing cap set, Z, black plastic, set of 2 front wheel bearing cap..
9	SP11-000138	Hardware kit, 48Z, front wheel axle bolt and axle hardware..
10	SP12-000207	Front wheel yoke, 48ZS, black, with assembly hardware to frame, axle NOT included
11	SP11-000033	Tire assembly, 48Z, front tire mounted to rim, with bearings pressed into rim hub, ribbed 13" x 5" x 6" tire
12	SP11-000139	Hardware kit, Z, fasten frame to control panel end caps, and attach deck height set bracket to right hand side of frame..
13	SP11-000140	Hardware kit, Z, W, retaining hardware for front wheel caster, includes, bolt, fender washer, and lock washer..
14	SP11-000141	Hardware kit, Z, frame to chassis mounting hardware, contains 10 custom carriage bolts and locking nuts..
15	SP12-000208	head light wire harness and wire harness line clips
16	SP12-000209	Headlight bezel, lense, and bulb assembly, set of 2
17	SP12-000189	Grease fittings, set of 10

48"ZS Chassis Diagram-Assembly Reference

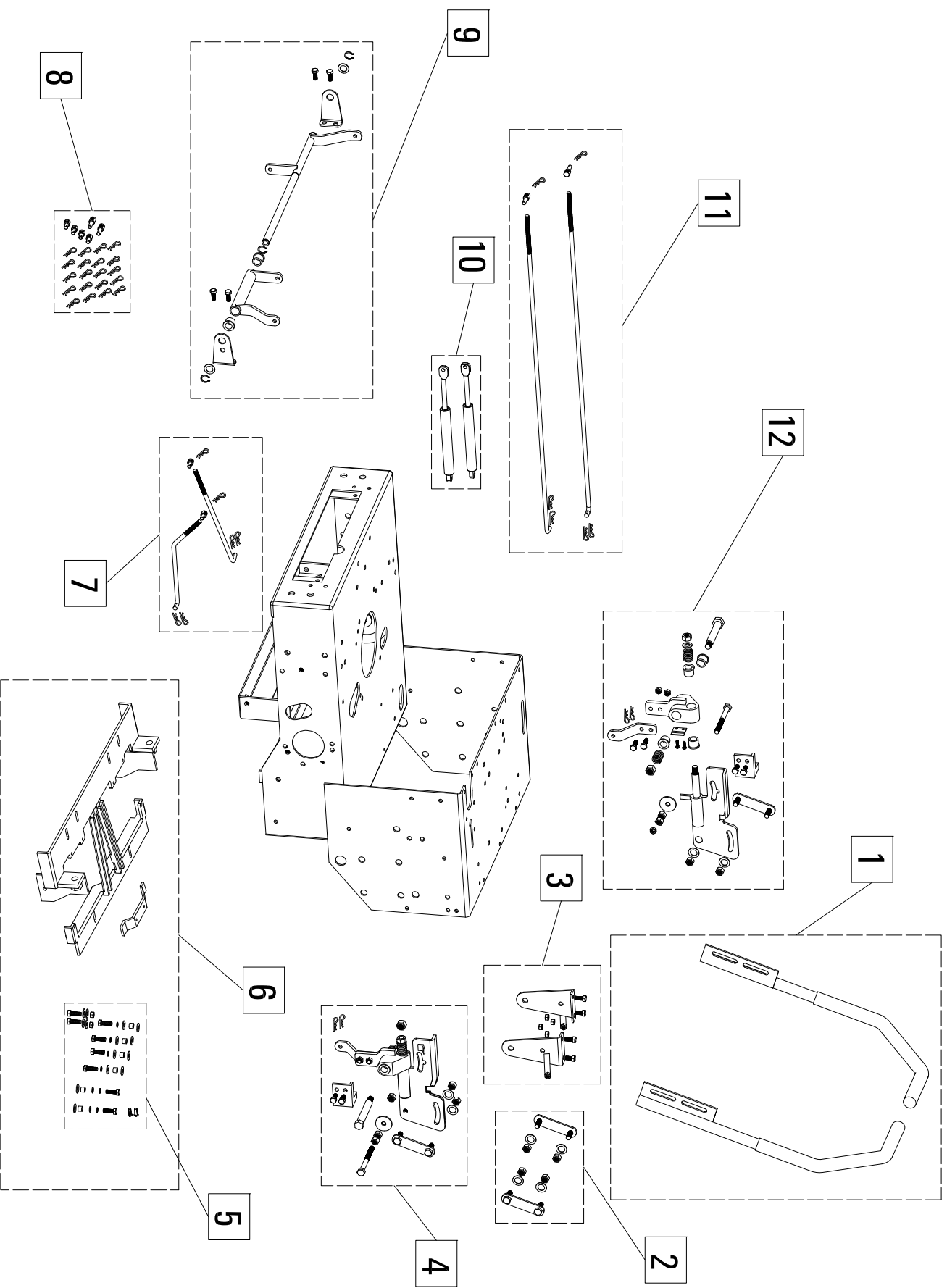


48" ZS Chassis Diagram-Chassis Components Diagram



48ZS" Chassis Diagram -Chassis Components Diagram Key		
Item #	Gxi Part Number	Description
1	SP11-000002	Seat assembly, 48ZS, STANLEY logo, with sliders and operator presence switch..
2	SP11-000090	Seat U mount assembly with suspension springs and hardware
3	M10-000538	Seat belt, Z, retractable
4	SP11-000094	Seat belt hanger, retainer straps, and hardware
5	SP12-000196	Control panel assembly, 48ZS, black, include hardware and label
6	SP12-000197	Fender assembly, 48ZS, yellow, right hand side, with label
7	SP12-000198	Panel assembly, fuel tank neck cover, ZS, black, with hardware
8	SP12-000199	Fender assembly, 48ZS, yellow, left hand side, with label, and 2 cup holders.
9	SP11-000096	Reinforcement support, seat bracket, Z, black, with hardware
10	SP11-000020	Roll bar assembly, 48Z, left and right middle sections, upper section, hardware, pins, and labels....
11	SP11-000028	Roll bar pin kit, Z, contains 2
12	SP11-000097	Hardware kit, roll bar, 48Z, hardware for middle and upper section roll bar attachment, includes 2 roll bar pins..
13	SP12-000200	Rear engine guard assembly, 48ZS, yellow, plastic tube caps, and label
14	SP11-000031	Guard, rear hydro guard with hardware....
15	SP11-000099	Hardware kit, roll bar, 48Z, hardware for lower and middle section roll bar attachment
16	SP11-000100	Roll bar assembly, 48Z, left and right lower sections, hardware
17	M10-000345	Chassis, 48ZS, black....
18	SP12-000201	Rear access cover, chassis, ZS, black, with hardware and labels..
19	SP11-000102	Hardware kit, fender mounting hardware..
20	SP11-000103	Roll bar silencers, Z, upper, with hardware, use Loctite during assembly (Loctite not included)
21	SP12-000202	Hardware kit, for panel assembly SP12-000198 and SP12-000218
22	SP12-000158	Hydro/Final drive pulley covers, 48Z, black, with hardware
23	SP12-000182	Cup holders, Z, black plastic, contains 2 - glue into fender (glue not included)

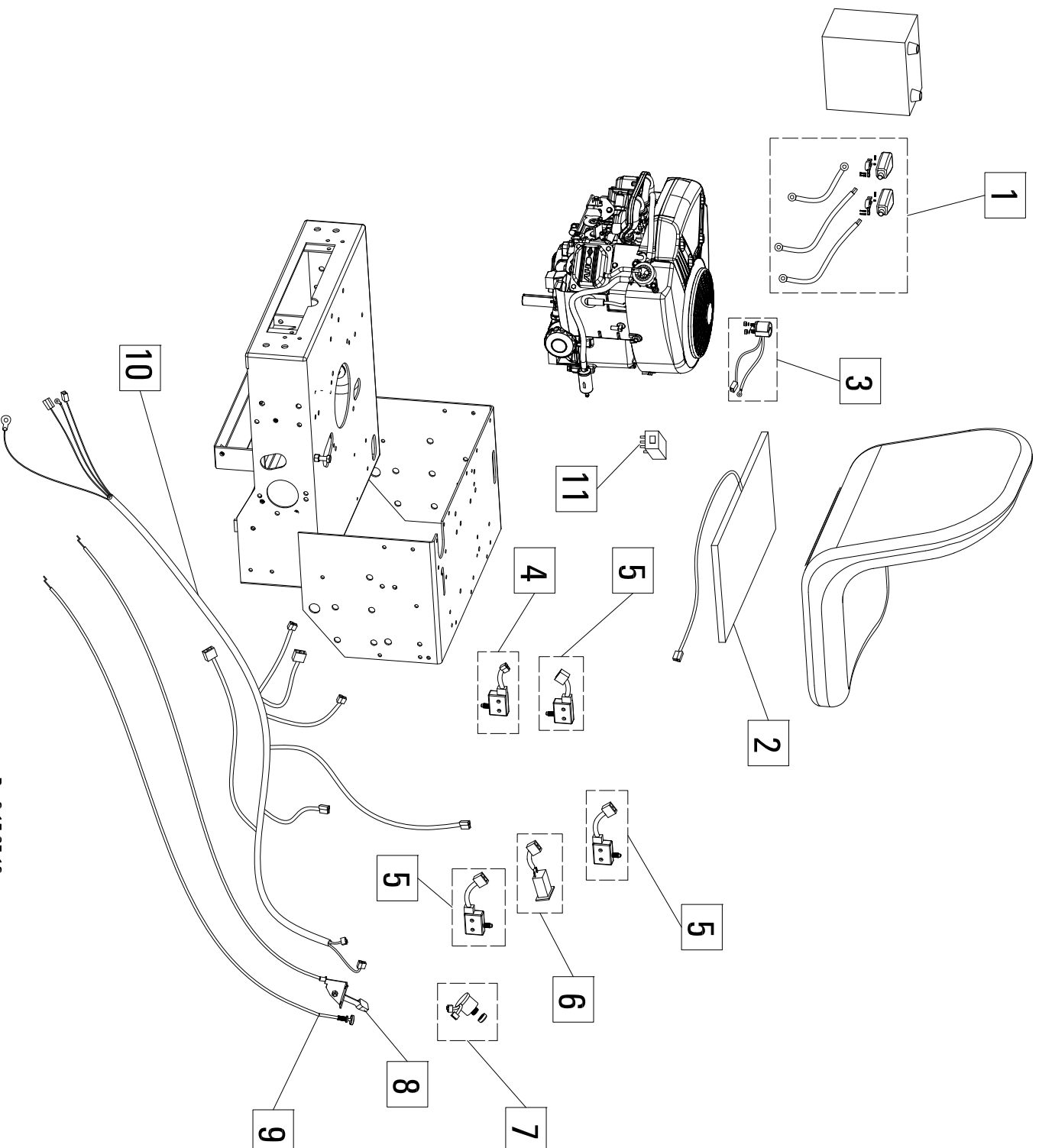
48"ZS Chassis Diagram-Hydrostatic Drive Controls



48ZS" Chassis Diagram -Hydrostatic Drive Controls Key

Item #	Gxi Part Number	Description
1	SP11-000019	Control handle assembly, Z, right and left control handles, black, textured vinyl coated
2	SP11-000117	Control handle retainer assembly, Z, set of 2 control handle retainers and hardware..
3	SP12-000203	Reinforcement kit, 48ZS, 54Z, 62Z, inner controls hanger set with hardware..
4	SP11-000013	Control pivot assembly, Z, right hand side, includes all hardware, visible return to neutral block, and control handle retainer assembly
5	SP11-000119	Hardware kit, Z, W, hydro carrier to chassis fastening hardware..
6	SP11-000120	Hydro carrier kit, Z, includes center reinforcement, and hydro carrier to chassis fastening hardware...
7	SP11-000121	Rod kit, hydro control, Z, left and right rods, threaded rod ends, and cotter pins..
8	SP11-000122	hardware kit, Z, W, 2 long shaft threaded rod ends, 4 standard threaded rod ends, 20 cotter pins..
9	SP11-000027	Rear control assembly, Z, rear hydro control pivot assembly with mounting hardware..
10	SP11-000123	Damper kit, Zm 2 control system dampers included..
11	SP11-000124	Rod kit, Z, intermediate control between handle and rear control assembly, includes long shaft threaded rod ends, and pins..
12	SP11-000012	Control pivot assembly, Z, left hand side, includes all hardware, visible return to neutral block, and control handle retainer assembly..

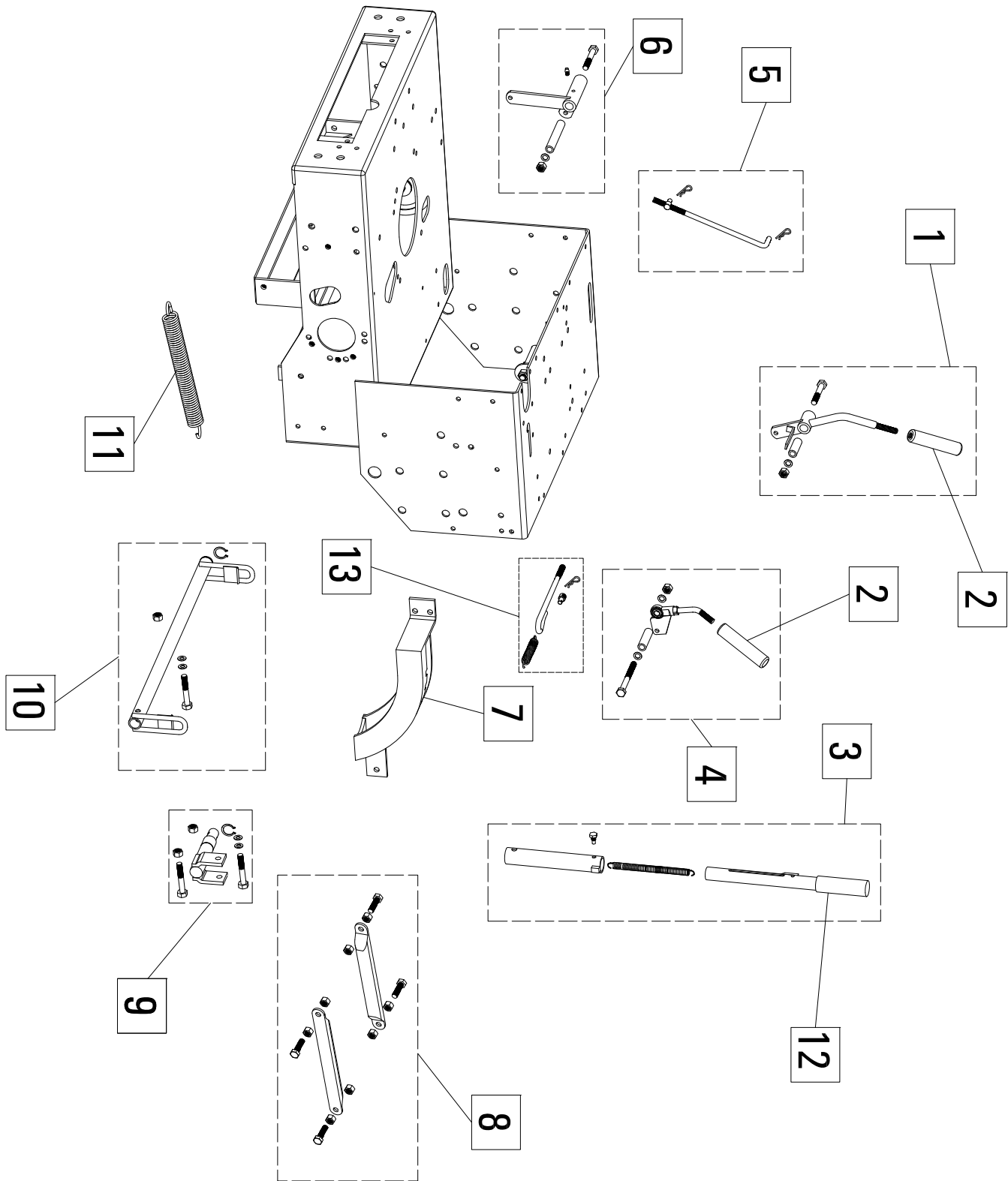
48" ZS Chassis Diagram-Engine Mechanical/Electrical Controls



48ZS" Chassis Diagram -Engine Mechanical/Electrical Controls Key

Item #	Gxi Part Number	Description
1	SP11-000130	Battery cable set, 48Z, 54ZS, includes terminals, terminal covers, positive and ground battery cables, and solenoid to starter cable..
2	SP11-000131	Switch, seat seat safety, operator presence, 48Z..
3	M10-000881	Solenoid, starter, 48Z, 54ZS, includes leads for wiring harness
4	M10-000543	Switch, blade drive interlock, Z, W, NC, with pigtail and male plastic plug
5	M10-000544	Switch, blade drive interlock, Z, W, NO, with pigtail and female plastic plug
6	M10-000541	Hour meter, Z, W, with soldered pigtails and female plastic plug
7	M10-000539	Switch, 3 position, Z, W, with keys, 3 pin and 2 pin female plastic plug
8	M10-000876	throttle cable 1270mm..
9	M10-000877	choke cable 1295.4mm..
10	M10-000924	48ZS Wiring Harness
11	M10-001457	Switch relay, seat safety, Kawasaki FR-600 seat relay, required for Kawasaki powered 48ZS

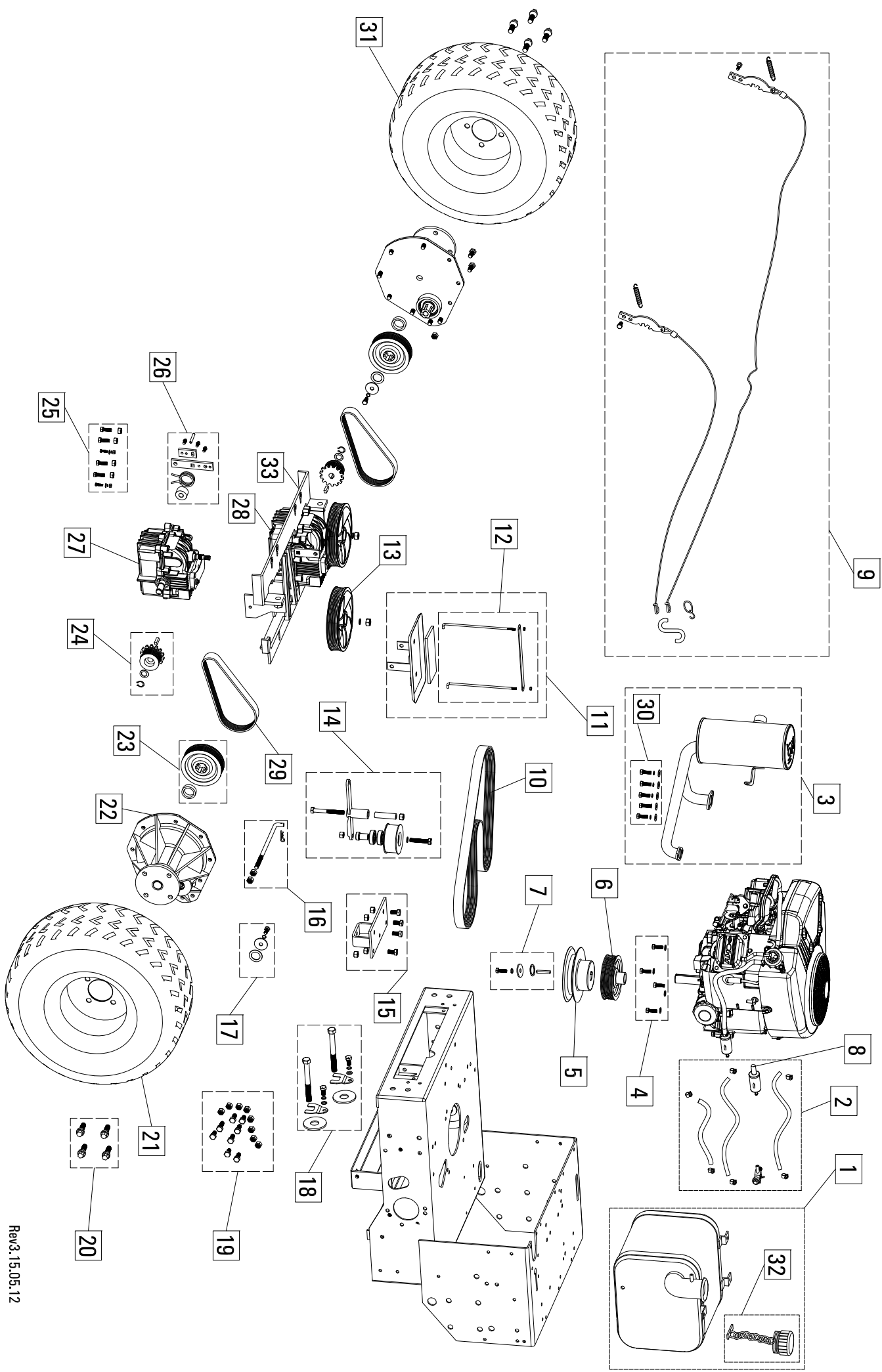
48" ZS Chassis Diagram-Blade, Brake, Deck Lift Handle Systems



48ZS" Chassis Diagram -Blade , Deck Lift Handle Systems Key

Item #	Gxi Part Number	Description
1	SP11-000008	Handle assembly, blade on/off, Z, includes pivot bushing, vinyl handle grip, and mounting hardware....
2	M10-000023	Handle grip, vinyl coated, Z, vinyl coated steel, blade and brake handle grip, contains 1 vinyl coated handle
3	SP11-000014	Handle assembly, deck lift, Z, includes upper handle, lower handle, return spring, guide bolt, and vinyl grip
4	SP11-000010	Handle assembly, park brake, Z, includes pivot bushing, vinyl handle grip, and mounting hardware..
5	SP11-000125	Rod kit, intermediate deck engagement, Z, includes threaded rod end and cotter pins..
6	SP11-000007	Pivot kit, blade engagement, Z, pivot assemblby between deck handle and deck clutch, includes pivot bushing and hardware..
7	SP12-000204	Deck height set bracket, ZS, black, with height label..
8	SP11-000127	Stabilizer assembly, rear, 48Z, black, left and right stabilizers, with hardware..
9	SP11-000128	Mount, deck lift handle, Z, with bolt and locking nut
10	SP11-000129	Deck height pivot bar, Z, with bolt and locking nut
11	M10-000356	Spring, Z, deck height lift assist spring
12	M10-000812	ZTR height adjustment Grip
13	SP12-000812	Rod kit, deck engagment, Z, Includes threaded rod end and cotter pin and spring

48"ZS Chassis Diagram-Power Train Diagram



48ZS" Chassis Diagram -Power Train Diagram Key

Item #	Gxi Part Number	Description
1	SP11-000104	Fuel tank assembly, 48Z, tethered fuel cap, fuel valve
2	SP11-000105	Fuel system kit, Z, fuel supply line, fuel valve, filter, fuel tank breather line, and 6 hose clamps..
3	SP12-000194	Muffler, 48Z, vertical canister, Kawasaki FR-600V 20hp engine with hardware and gaskets
4	SP12-000195	Hardware kit, engine mounting bolts, 48ZS/54ZS/62Z, Kawasaki engine..
5	M10-000289	Pulley, engine, deck belt, 48Z, 1" bore with keyway, black, cast..
6	M10-001215	Pulley, engine, hydro input, 48Z, 54Z, 1" bore with keyway, cast aluminum
7	SP11-000107	Hardware kit, engine pulley retaining hardware, Z, W, key, washers, lock washer, bolt
8	M10-000535	fuel filter..
9	SP11-000140	Hardware kit, Z, W, retaining hardware for front wheel caster, includes, bolt, fender washer, and lock washer..
10	M10-000469	Belt, hydro input, Z, 8PK-1690
11	SP11-000108	Battery pan kit, includes tie down posts, strap, and hardware
12	SP11-000109	Battery tie down kit, includes tie down posts, strap, and hardware..
13	M10-001217	Pulley, hydro, input, Z, integrated fan, Peerless spline, aluminum
14	SP11-000011	Pulley kit, hydro, input idler, Z, includes pulley, carrier arm, bushing, and hardware.....
15	SP11-000110	Pulley mount kit, hydro, input idler, Z, idle pulley carrier mount and hardware..
16	SP11-000111	Rod kit, hydro input tension, Z, includes threaded rod end and cotter pins..
17	SP11-000112	Hardware kit, Z, W, final drive input pulley hardware, includes washers, bolt, lockwasher, shims, use Loctite during assembly on bolt threads..
18	SP11-000113	Hardware kit, Z, hydro output belt tension hardware, includes M16 bolts, bolt locks, and bolt lock hardware
19	SP11-000114	Hardware kit, Z, W, final drive mounting hardware to chassis..
20	SP11-000115	Lug bolts, 48Z, set of 4, 1/2" x 20..
21	SP11-000004	Tire assembly, 48Z, RIGHT side rear tire mounted to rim, turf tread 20" x 8" x 8" tire....
22	M10-000819	Final drive assembly, 48Z, aluminum housing....
23	SP11-000032	Pulley, final drive, Z, splined bore, 8PK, aluminum
24	SP12-000151	Pulley assembly, hydro output, Z, 8PK, contains 2 pulleys, keys, snap rings, washers
25	SP11-000116	Hardware kit, Z, W, hydro to carrier mounting hardware, includes grade 10.9 hardware for front corner..
26	SP11-000003	Return to neutral assembly, Z, includes hardware
27	2100-006D	Hydro, Peerless 2100-006D, integrated pump motor..
28	2100-007D	Hydro, Peerless 2100-007D, integrated pump motor..
29	SP12-000191	Belt, final drive, Z, 8PK-644, set of 2
30	SP12-000192	Hardware kit, muffler, Z, W, universal

48ZS" Chassis Diagram -Power Train Diagram Key

Item #	Gxi Part Number	Description
31	SP12-000193	Tire assembly, 48Z, LEFT side rear tire mounted to rim, turf tread 20" x 8" x 8" tire...
32	M10-001409	Fuel tank cap, for steel tank, plastic, with tether, sealed