

Z-BEAST

FINISH MOWER by **DEK**

Owner's Manual

This manual contains important safety instructions for the gasoline engine powered
lawnmower models: 48ZB

READ SAFETY WARNINGS AND OPERATING INSTRUCTIONS CAREFULLY.
SAVE THIS MANUAL.



Need Help?

Parts, Service
and Technical Assistance call:

1-919-550-3221

1-800-393-0668

www.beastpowerequipment.com

When you call the help-line you will need to have the following information:

Date of Purchase: _____

Location of Purchase: _____

Serial # - Mower: _____

Serial # - Engine: _____

Serial # - Hydro Trans (L) _____

Serial # - Hydro Trans (R) _____

Mower and engine life are extended greatly by performing frequent lubrications, oil changes and regular maintenance. To protect your investment perform routine maintenance.

Copyright© 2010 by GXi Outdoor Power, LLC. All rights reserved.

No part of this publication can be reproduced or distributed without prior written permission of GXi Outdoor Power, LLC Clayton, NC 27520 USA.

DEK is a registered trademark of GXi Outdoor Power, LLC

GXi Outdoor Power, LLC reserves the right to discontinue or change specifications or design at any time without notice and without incurring any obligation whatsoever.

The information and specifications included in this publication were in effect at the time of approval for printing.



**This manual contains important safety instructions for Finish Mowers
READ SAFETY WARNINGS AND OPERATING INSTRUCTIONS CAREFULLY
SAVE THESE INSTRUCTIONS.**

This owner's manual is considered a permanent part of the finish mower and should remain with the finish mower if resold.

BEAST SERIES

Check out our other great products at www.HomeDepot.com
or visit our web site at www.beastpowerequipment.com

TURF BEAST

36-inch & 54-inch Walk Behind Mower



Z-BEAST

54-inch & 62-inch Zero-Turn Mower



SNOW BEAST

36-inch & 45-inch Snow Blower



BRUSH BEAST

36-inch Brush Mower



BRUSH MASTER

Chipper/Shredder with 2-Way Feed



THE BEAST

100-inch Tow Behind Mower



Contents

Safety Information and Warnings	1,7
Preparation Safety Precautions	8
Operation Safety Precautions	9,10
Slope Diagram.....	11
Safety Decals	12
Product Specifications	13
Control Panel and Lawn Mower Components	14
Missing Parts Request Form	15
Operating Instructions	
Starting the Engine	16
Operating the Mower	17
Changing the Height of Cut	18
Mowing	18
Disengaging Hydrostatic Drive Units	19
Return to Neutral.....	19
Quick Start.....	20,21
General Maintenance.....	22
Maintenance Schedule.....	23
Maintenance Spare parts.....	24,33
Service Adjustments	
Engine.....	34
Deck Belt.....	35,38
Spindle Break Inspection and Replacement.....	39
Removing the Blades.....	39
Engine-to-Hydrostatic Drives Belt Adjustment.....	40
Hydro System Adjustment.....	41
Safety System Adjustment/Belt Routing.....	42
Lubrication Points	43
Battery.....	43
Storage Instructions.....	44
Troubleshooting.....	45,46
Limited Warranty and Service.....	47

About the Z-BEAST Mower Manual

Congratulations on the purchase of your new Z-BEAST commercial mower. We at GXi Outdoor Power are confident that this mower will provide excellent performance, outstanding quality, and great durability when operated and maintained as directed in this manual.

1. This manual contains operating, safety, adjustment, maintenance, and troubleshooting instructions. **BEFORE OPERATING YOUR LAWN MOWER, CAREFULLY READ THIS MANUAL IN ITS ENTIRETY.**
2. This owner's manual is considered a permanent part of the mower. It must be available to all operators and/or person(s) servicing the mower. Should the mower be resold, this manual must remain with the mower.
3. All information, illustrations, and specifications contained in this manual were in effect at the time of the publication. GXi Outdoor Power reserves the right to add, delete or modify specifications and/or designs without notice.
4. If you ever have questions in regards to the operation, maintenance or safety of your mower, please contact the GXi Parts & Service, LLC at 1-919-550-3221 or 1-800-393-0668.

⚠ WARNING: ⚠

The engine exhaust from this product contains chemicals known to the State of California to cause cancer, birth defects, or other reproductive harm.

⚠ AVERTISSEMENT: ⚠

Les gaz d'échappement du moteur de ce produit contiennent des produits chimiques reconnus dans l'état de Californie comme cancérigènes, responsables de malformations congénitales, ou comme nocifs à l'égard des fonctions de la reproduction.

⚠ ADVERTENCIA: ⚠

El escape del motor de esta herramienta contiene productos químicos que según la información del Estado de California producen cáncer, defectos congénitos u otros riesgos reproductivos.

⚠ CAUTION**POTENTIAL HAZARD**

- If you leave the wire on the spark plug, someone could start the engine.

WHAT CAN HAPPEN

- Accidental starting of engine could seriously injure you or other bystanders.

HOW TO AVOID THE HAZARD

- Pull wire off spark plug before you do any maintenance. Also push wire aside so it does not accidentally contact spark plug.

⚠ PRUDENCIA**PELIGRO POTENCIAL**

- Si se deja el cable de la bujía conectado, es posible arrancar accidentalmente el motor.

LO QUE PUEDE SUCEDER

- El arrancado accidental del motor puede lesionar gravemente al operador o a los espectadores.

COMO EVITAR EL PELIGRO

- Desconecte el cable de la bujía antes de llevar a cabo ninguna operación de mantenimiento. Más aún, sepárelo completamente para que no pueda tocar accidentalmente la bujía.

⚠ PRUDENCE**DANGER POTENTIEL**

- Si le fil de bougie n'est pas débranché, un démarrage du moteur peut survenir accidentellement.

QUELS SONT LES RISQUES?

- Le démarrage accidentel peut causer des blessures graves à vous ou aux personnes se tenant à proximité.

COMMENT SE PROTÉGER?

- Débrancher le fil de bougie avant de procéder à toute opération d'entretien. Ecarter suffisamment le fil pour ne pas risquer un contact fortuit avec la bougie.

⚠ WARNING**POTENTIAL HAZARD**

- Engine exhaust contains carbon monoxide, which is an odorless, deadly poison.

WHAT CAN HAPPEN

- Carbon monoxide can kill you and is also known to the State of California to cause birth defects.

HOW TO AVOID THE HAZARD

- Do not run engine indoors or in an enclosed area.

⚠ ADVERTENCIA**PELIGRO POTENCIAL**

- Los gases de escape del motor contienen monóxido de carbono, un veneno mortal e inodoro.

LO QUE PUEDE SUCEDER

- El monóxido de carbono es mortal, y en el estado de California se ha comprobado que causa defectos congénitos.

COMO EVITAR EL PELIGRO

- No haga funcionar el motor dentro de la casa o en recintos cerrados.

⚠ ATTENTION**DANGER POTENTIEL**

- L'échappement du moteur contient du monoxyde de carbone, un gaz inodore mortellement dangereux.

QUELS SONT LES RISQUES?

- Le monoxyde de carbone entraîne la mort par asphyxie. Il peut aussi provoquer des malformations congénitales.

COMMENT SE PROTÉGER?

- Ne pas faire tourner le moteur à l'intérieur ou dans un endroit clos.

⚠ DANGER**POTENTIAL HAZARD**

- In certain conditions gasoline is extremely flammable and highly explosive.

WHAT CAN HAPPEN

- A fire or explosion from gasoline can burn you, others, and cause property damage.

HOW TO AVOID THE HAZARD

- Use a funnel and fill the fuel tank outdoors, in an open area, when the engine is cold. Wipe up any gasoline that spills.
- Do not fill the fuel tank completely full. Add gasoline to the fuel tank until the level is 1/4" to 1/2" (6 mm to 13 mm) below the bottom of the filler neck. This empty space in the tank allows gasoline to expand.
- Never smoke when handling gasoline, and stay away from an open flame or where gasoline fumes may be ignited by a spark.
- Store gasoline in an approved container and keep it out of the reach of children.
- Never buy more than a 30-day supply of gasoline.

⚠ PELIGRO**PELIGRO POTENCIAL**

- En ciertas condiciones, la gasolina es extremadamente inflamable y altamente explosiva.

LO QUE PUEDE SUCCEDER

- Un incendio o una explosión causados por gasolina pueden quemar al operador y otras personas y causar daños materiales.

COMO EVITAR EL PELIGRO

- Utilice un embudo y llene el depósito de combustible en el exterior, en un área abierta y con el motor frío. Limpie la gasolina derramada.
- No llene a tope el depósito de gasolina. Añada gasolina hasta que el nivel alcance desde 6 mm a 13 mm (1/4 a 1/2 pulgada) por debajo de la parte inferior del cuello de llenado. Este espacio vacío en el depósito permite la dilatación de la gasolina.
- No fume nunca mientras maneja la gasolina y manténgase alejado de llamas desnudas o de lugares donde una chispa pueda inflamar los vapores de la gasolina.
- Almacene la gasolina en un recipiente homologado y manténgalo fuera del alcance de los niños.
- No compre nunca una provisión de gasolina para más de 30 días.

⚠ DANGER**DANGER POTENTIEL**

- Dans certaines conditions, l'essence est extrêmement inflammable et hautement explosive.

QUELS SONT LES RISQUES?

- Un incendie ou une explosion causés par l'essence peuvent occasionner des brûlures à vous ou à d'autres personnes, ainsi que des dégâts matériels.

COMMENT SE PROTÉGER?

- Utiliser un entonnoir et remplir le réservoir à l'extérieur, dans un endroit dégagé, lorsque le moteur est froid. Essuyer l'essence éventuellement répandue.
- Ne pas remplir le réservoir à ras bords. Le niveau d'essence doit arriver à 6 à 13 mm (1/4 à 1/2 pouce) sous le goulot de remplissage. L'espace au-dessus doit rester vide pour permettre à l'essence de se dilater.
- Ne pas fumer lorsqu'on manipule de l'essence, et se tenir à l'écart de toute flamme nue ou source d'étincelles.
- Conserver l'essence dans un récipient homologué, hors de la portée des enfants.
- Ne jamais acheter une provision d'essence correspondant à une consommation de plus de 30 jours.

⚠ WARNING**POTENTIAL HAZARD**

- Wet grass or leaves can cause you to slip and contact blade.

WHAT CAN HAPPEN

- Blade contact can seriously injure you.

HOW TO AVOID THE HAZARD

- Mow only in dry conditions.

⚠ ADVERTENCIA**PELIGRO POTENCIAL**

- La hierba húmeda le puede hacer resbalar y tropezar con la cuchilla.

LO QUE PUEDE SUCCEDER

- El contacto con la cuchilla le puede lesionar gravemente.

COMO EVITAR EL PELIGRO

- Corte la hierba sólo en condiciones secas.

⚠ ATTENTION**DANGER POTENTIEL**

- L'herbe et les feuilles mouillées augmentent les risques de glissade et de contact avec la lame.

QUELS SONT LES RISQUES?

- Le contact avec la lame peut causer des blessures graves.

COMMENT SE PROTÉGER?

- Ne tondre que si l'herbe est sèche.

⚠ DANGER**POTENTIAL HAZARD**

- Grass clippings and other objects can be thrown from an open discharge tunnel.

WHAT CAN HAPPEN

- Objects thrown with enough force could cause serious personal injury or death to operator or bystander.

HOW TO AVOID THE HAZARD

- Never open door on discharge tunnel when engine is running unless the optional grass bag, optional side discharge attachment or discharge tunnel plug is securely installed.

⚠ WARNING

POTENTIAL HAZARD

- Blade is sharp.

WHAT CAN HAPPEN

- Contact with sharp blade can cause serious personal injury.

HOW TO AVOID THE HAZARD

- Wear gloves or wrap sharp edges of the blade with a rag.

⚠ ADVERTENCIA

PELIGRO POTENCIAL

- La cuchilla está afilada.

LO QUE PUEDE SUCEDER

- El contacto con la cuchilla puede causar lesiones corporales graves.

COMO EVITAR EL PELIGRO

- Utilice guantes o envuelva los bordes afilados de la cuchilla con un trapo.

⚠ ATTENTION

DANGER POTENTIEL

- La lame est tranchante.

QUELS SONT LES RISQUES?

- Le contact avec la lame peut causer des blessures graves.

COMMENT SE PROTÉGER?

- Porter des gants ou envelopper la lame d'un chiffon.

⚠ WARNING

POTENTIAL HAZARD

- A worn or damaged blade could break and a piece of blade could be thrown in operator's or bystander's direction.

WHAT CAN HAPPEN

- A thrown piece of blade could cause serious personal injury or death to operator or bystanders.

HOW TO AVOID THE HAZARD

- Inspect blade periodically for wear or damage.
- Replace a worn or damaged blade.

⚠ ADVERTENCIA

PELIGRO POTENCIAL

- Una cuchilla gastada o dañada podría partirse y un pedazo de la misma podría ser lanzado hacia el área del operador o de un espectador.

LO QUE PUEDE SUCEDER

- Un pedazo desprendido de la cuchilla puede causar serias lesiones o la muerte al operador o a un espectador.

COMO EVITAR EL PELIGRO

- Compruebe periódicamente si la cuchilla está gastada o dañada.
- Reemplace la cuchilla gastada o dañada.

⚠ ATTENTION

DANGER POTENTIEL

- Une lame usée ou endommagée risque de se rompre en projetant le morceau cassé vers l'utilisateur ou les personnes à proximité.

QUELS SONT LES RISQUES?

- Un morceau de lame projeté avec force peut infliger des blessures graves, voire mortelles, à l'utilisateur ou aux personnes à proximité.

COMMENT SE PROTÉGER?

- Vérifier régulièrement si la lame n'est pas usée ou endommagée.
- Remplacer la lame si elle est usée ou endommagée.

⚠ WARNING

POTENTIAL HAZARD

- Gasoline is extremely flammable, highly explosive and under certain conditions can cause personal injury or property damage.

WHAT CAN HAPPEN

- Tipping mower may cause fuel leakage from carburetor or fuel tank.

HOW TO AVOID THE HAZARD

- Avoid fuel spills by running engine dry or remove gas with hand pump, never siphon.

⚠ ADVERTENCIA

PELIGRO POTENCIAL

- La gasolina es extremadamente inflamable, altamente explosiva y, en ciertas condiciones, puede causar lesiones corporales y daños materiales.

LO QUE PUEDE SUCEDER

- Al inclinar la cortadora se puede derramar combustible del carburador o del depósito de gasolina.

COMO EVITAR EL PELIGRO

- Evite los derrames de gasolina dejando que el motor gire hasta que se seque, o vacíe el depósito con una bomba de mano, nunca con un sifón.

⚠ ATTENTION

DANGER POTENTIEL

- L'essence est extrêmement inflammable et hautement explosive, et peut dans certaines circonstances causer des dommages corporels ou matériels graves.

QUELS SONT LES RISQUES?

- Lorsqu'on retourne la tondeuse, l'essence risque de fuir du réservoir ou du carburateur.

COMMENT SE PROTÉGER?

- Pour éviter les fuites, laisser le moteur consommer toute l'essence, ou vider le réservoir à l'aide d'une pompe à main. Ne jamais siphonner à la bouche.

⚠ WARNING

POTENTIAL HAZARD

- Gasoline can vaporize if stored over long periods of time.

WHAT CAN HAPPEN

- Vaporized fuel can explode if it comes into contact with open flame.

HOW TO AVOID THE HAZARD

- Do not store gasoline (fuel) over long periods of time.
- Do not store mower with fuel in the tank in an enclosure with an open flame. (Example: furnace or water heater pilot light.)
- Allow the engine to cool before storing in any enclosure.

⚠ ADVERTENCIA

PELIGRO POTENCIAL

- Si se almacena durante un período prolongado de tiempo, la gasolina puede evaporarse.

LO QUE PUEDE SUCEDER

- El combustible evaporado puede explotar si entra en contacto con una llama desnuda.

COMO EVITAR EL PELIGRO

- No almacene gasolina (combustible) durante períodos prolongados de tiempo.
- No guarde la cortadora de césped conteniendo combustible en el depósito en un recinto cerrado con una llama desnuda. (Por ejemplo: un horno o la llama piloto de un calentador de agua)
- Espere a que se enfríe el motor antes de guardar la cortadora en un recinto cerrado.

⚠ DANGER**POTENTIAL HAZARD**

- Thrown objects may result if discharge door does not close completely.

WHAT CAN HAPPEN

- Thrown objects can cause serious personal injury or death.

HOW TO AVOID THE HAZARD

- If discharge door cannot be closed because grass clippings clog discharge area, stop engine and gently move discharge door handle back and forth until door can be closed completely. If door still cannot be closed, remove obstruction with a stick, not your hand.

⚠ PELIGRO**PELIGRO POTENCIAL**

- Si la puerta de descarga no está completamente cerrada podrían salir objetos disparados.

LO QUE PUEDE SUCCEDER

- Los objetos lanzados pueden causar serias lesiones personales o incluso la muerte.

COMO EVITAR EL PELIGRO

- Si la puerta de descarga no puede cerrarse por atascamiento de recortes de hierba en el área de descarga, detenga el motor y cuidadosamente mueva el asa de la puerta de descarga hacia atrás y hacia adelante hasta que pueda cerrarse completamente. Si aún no pudiese cerrarse la puerta, detenga el motor y quite la obstrucción con un palo, nunca con la mano.

⚠ DANGER**DANGER POTENTIEL**

- Des objets risquent d'être projetés si le volet d'éjection n'est pas complètement fermé.

QUELS SONT LES RISQUES?

- Des objets projetés peuvent occasionner des blessures graves, voire mortelles.

COMMENT SE PROTÉGER?

- Si le volet d'éjection ne peut pas être fermé du fait d'un blocage par des déchets d'herbe, couper le moteur et actionner doucement la poignée dans un sens et dans l'autre jusqu'à ce que le volet se ferme entièrement. Si cela ne suffit pas, retirer ce qui obstrue le volet à l'aide d'un bâton, pas avec la main.

⚠ DANGER**POTENTIAL HAZARD**

- Adjusting height-of-cut levers could bring hands into contact with moving blade.

WHAT CAN HAPPEN

- Contact with rotating blade can cause serious injury.

HOW TO AVOID THE HAZARD

- Stop engine and wait for all movement to stop before adjusting cutting height.
- Do not put fingers under housing when adjusting height-of-cut.

⚠ PELIGRO**PELIGRO POTENCIAL**

- El ajustar las palancas de altura de corte puede hacer que las manos hagan contacto con la cuchilla en movimiento.

LO QUE PUEDE SUCCEDER

- El contacto con la cuchilla puede causar serias lesiones personales.

COMO EVITAR EL PELIGRO

- Detenga el motor y espere a que todas las piezas móviles se paren antes de ajustar la altura de corte.
- No meta los dedos debajo de la caja cuando ajuste las palancas de altura de corte.

⚠ DANGER**DANGER POTENTIEL**

- Les doigts risquent d'entrer en contact avec la lame en rotation lors du réglage de la hauteur de coupe.

QUELS SONT LES RISQUES?

- Le contact avec la lame en rotation peut causer des blessures graves.

COMMENT SE PROTÉGER?

- Arrêter le moteur et attendre l'arrêt complet de toutes les pièces mobiles avant de régler la hauteur de coupe.
- Ne pas mettre les doigts sous le carter de tondeuse lors du réglage de la hauteur de coupe.

⚠ WARNING**POTENTIAL HAZARD**

- Tipping mower may cause fuel leakage from carburetor or fuel tank.

WHAT CAN HAPPEN

- Gasoline is extremely flammable, highly explosive and under certain conditions can cause personal injury or property damage.

HOW TO AVOID THE HAZARD

- Avoid fuel spills by running engine dry or remove gas with hand pump, never siphon.

⚠ ADVERTENCIA**PELIGRO POTENCIAL**

- Al inclinar la cortadora se puede derramar combustible del carburador o del depósito de gasolina.

LO QUE PUEDE SUCCEDER

- La gasolina es extremadamente inflamable, altamente explosiva y, en ciertas condiciones, puede causar lesiones corporales y daños materiales.

COMO EVITAR EL PELIGRO

- Evite los derrames de gasolina dejando que el motor gire hasta que se seque, o vacíe el depósito con una bomba de mano, nunca con un sifón.

⚠ ATTENTION**DANGER POTENTIEL**

- Lorsqu'on retourne la tondeuse, l'essence risque de fuir du réservoir ou du carburateur.

QUELS SONT LES RISQUES?

- L'essence est extrêmement inflammable et hautement explosive, et peut dans certaines circonstances causer des dommages corporels ou matériels graves.

COMMENT SE PROTÉGER?

- Pour éviter les fuites, laisser le moteur consommer toute l'essence, ou vider le réservoir à l'aide d'une pompe à main. Ne jamais siphonner à la bouche.

Safety Information

TURF BEAST lawn mowers are designed to give safe and dependable service if operated according to instructions. Read and understand this owner's manual before operating your lawn mower.

Emission Control System InformationThe U.S. and California Clean Air Acts

EPA and California regulations require all manufacturers to furnish written instructions describing the operation and maintenance of emission control systems. The following instructions and procedures must be followed in order to keep the emissions from your engine within the emission standards.

Safety Label Locations

Safety labels are located on your mower to warn you of potential hazards. Read them carefully. If a label comes off or becomes hard to read, contact your GXi Parts and Service, LLC for a replacement.

Operator Responsibility

Be sure that anyone who operates the lawn mower receives proper instruction. the use of all controls, output receptacles and connections. Children should not operate the lawn mower without parental supervision.

Información de seguridad

Las cortadoras de césped TURF BEAST están diseñadas para brindar un servicio seguro y confiable si se las hace funcionar siguiendo las instrucciones. Lea y comprenda este manual del usuario antes de poner en funcionamiento su cortadora de césped.

Información sobre el sistema de control de emisionesLeyes sobre aire puro de California y los EE. UU.

Las regulaciones de la EPA y California obligan a que todos los fabricantes provean instrucciones escritas que describan el funcionamiento y el mantenimiento de los sistemas de control de emisiones. Deben seguirse las siguientes instrucciones y procedimientos para mantener las emisiones de su motor en el rango de los estándares de emisión.

Ubicación de las etiquetas de seguridad

Las etiquetas de seguridad se encuentran en la cortadora de césped para advertirle de los peligros potenciales. Léalas cuidadosamente. Si una de las etiquetas se desprende o es ilegible, póngase en contacto con GXi Parts and Service, LLC para obtener una de reemplazo.

Responsabilidad del operador

Asegúrese de que toda persona que opere la cortadora de césped reciba el entrenamiento adecuado. Conozca cómo detener la cortadora de césped de manera rápida en caso de una emergencia. Comprenda el uso de todos los controles, los tomacorrientes eléctricos y las conexiones. Los niños no pueden poner en funcionamiento la cortadora de césped sin la supervisión de los padres.

Renseignements sur la sécurité

Les tondeuses à gazon TURF BEAST sont conçues pour offrir un service fiable et sécuritaire lorsqu'elles sont utilisées conformément aux instructions. Assurez-vous de lire attentivement ce manuel d'utilisation avant de faire fonctionner votre tondeuse à gazon.

Renseignements concernant le dispositif antipollutionLois américaines et californiennes sur la qualité de l'air

L'EPA et la réglementation californienne exigent que tous les fabricants fournissent des instructions écrites décrivant le fonctionnement et l'entretien des dispositifs antipollution. Il est essentiel de suivre les instructions et les consignes suivantes afin de maintenir les émissions provenant de votre moteur dans les limites imposées.

Emplacement des étiquettes de sécurité

Les étiquettes de sécurité sont apposées sur votre tondeuse comme avertissement des dangers potentiels. Prenez-en connaissance. Si une étiquette se détache ou devient difficile à lire, contactez GXi Parts and Service, LLC pour en obtenir une nouvelle.

Responsabilité de l'opérateur

Assurez-vous que toute personne qui utilise la tondeuse à gazon soit adéquatement formée. Apprenez comment arrêter la tondeuse à gazon rapidement en cas d'urgence. Assurez-vous de savoir comment utiliser toutes les commandes ainsi que les prises et connexions de sortie. Les enfants qui utilisent la tondeuse à gazon doivent être en tout temps sous supervision parentale.

This machine meets or exceeds CPSC blade safety requirements for walk-behind rotary mowers and the B71.1 specifications of the American National Standards Institute, in effect at time of production. However, improper use or maintenance by the operator or owner can result in injury. To reduce the potential for injury, comply with these safety instructions and always pay attention to the safety warnings, alerts, maintenance instructions and labels on the mower and contained in this manual.

Este equipo cumple o supera los requisitos de seguridad de cuchillas CPSC para cortadoras de césped giratorias "walk behind" (para empujar por detrás) y las especificaciones B71.1 del Instituto Nacional Estadounidense de Estándares, vigentes en el momento de la producción. Sin embargo, el mantenimiento y uso incorrectos por parte del operador o el propietario pueden causar lesiones. Para reducir la posibilidad de lesiones, cumpla con estas instrucciones de seguridad y siempre preste atención a las etiquetas, y las instrucciones de mantenimiento, las alertas y las advertencias de seguridad de la cortadora de césped y que se encuentran en este manual.

Cet appareil satisfait ou dépasse les exigences de sécurité de la CPSC concernant la lame des tondeuses rotatives poussées et les spécifications B71.1 de l'American National Standards Institute, en vigueur au moment de la production. Cependant, une utilisation ou un entretien inadéquat par l'utilisateur ou le propriétaire pourrait entraîner des blessures. Pour réduire le risque potentiel de blessures, conformez-vous à ces consignes de sécurité et portez attention aux avertissements de sécurité, aux alertes, aux instructions d'entretien, contenus dans le présent manuel de même qu'aux étiquettes apposées sur la tondeuse.

Getting Started

Please read all warnings before proceeding.



WARNING



WARNING

Blades, belts, gasoline, gasoline vapors and carbon dioxide can all cause serious injury or even death. Use this piece of equipment with caution. Keep others including pets a safe distance from the mower and from the discharge chute. Clean up any gasoline you may spill. Do not operate on hills where the mower may roll down the hill and strike the operator or others. Clear all debris from the lawn before starting to cut grass. Remove the spark plug and turn the fuel valve off before attempting any maintenance. Turn the fuel valve off and drain the carburetor before storing this mower.

Introducción

Lea todas las advertencias antes de proceder.



ADVERTENCIA

Las cuchillas, las correas, la



ADVERTENCIA

gasolina, los vapores de la gasolina y el dióxido de carbono pueden causar lesiones graves o incluso la muerte. Utilice este equipo con precaución. Mantenga a las personas, incluidas las mascotas, a una distancia segura de la cortadora de césped y de la boca de descarga. Limpie la gasolina que pueda derramar. No opere en colinas donde la cortadora de césped pueda rodar cuesta abajo la colina y golpear al operador u otras personas. Limpie la basura del césped antes de empezar a cortarlo. Retire la bujía y apague la llave de paso del combustible antes de proceder a realizar el mantenimiento. Apague la llave de paso del combustible y drene el carburador antes de guardar la cortadora de césped.

Avant de commencer



ATTENTION

Veillez lire tous les avertissements avant de passer à



ATTENTION

l'étape suivante.

Les lames, les courroies, l'essence, les vapeurs d'essence et le dioxyde de carbone peuvent entraîner des blessures graves, voire mortelles. Utilisez cet équipement avec prudence. Veillez à ce que les personnes et les animaux se tiennent à une distance sécuritaire de la tondeuse et de sa goulotte d'éjection. Nettoyez tout déversement d'essence. N'utilisez pas la tondeuse dans les pentes, car elle pourrait dévaler et frapper l'opérateur ou d'autres personnes. Éliminez tous les débris de la pelouse avant de la tondre. Retirez la bougie d'allumage et fermez le robinet de carburant avant d'effectuer toute intervention d'entretien. Fermez le robinet de carburant et videz le carburateur avant d'entreposer la tondeuse.

Safety Information

Z-BEAST lawn mowers are designed to give safe and dependable service if operated according to instructions. Read and understand this owner's manual before operating your lawn mower.

Emission Control System Information

The U.S. and California Clean Air Acts

EPA and California regulations require all manufacturers to furnish written instructions describing the operation and maintenance of emission control systems. The following instructions and procedures must be followed in order to keep the emissions from your engine within the emission standards.

Safety Label Locations

Safety labels are located on your mower to warn you of potential hazards. Read them carefully. If a label comes off or becomes hard to read, contact your GXi Parts and Service, LLC for a replacement.

Operator Responsibility

It is the owner's responsibility that all operators and mechanics must be trained and read this manual before operating the mower as well as being physically able individuals. They should be instructed about safe operating and mechanical procedures. If they can not read or understand English, it is the owner's responsibility to explain all safety operating instructions. The owner or operator is responsible for accidents or injuries occurring to themselves, other people or property. Potential misfortunate incidents can be prevented by the owner/user.

2. Look for signs of damage or excessive wear. Check the tightness of all nuts, bolts, pins, and screws. Tighten any that may be loose and replace any that are missing.
3. Be sure the safety interlock controls are operating properly so that the engine cannot be started unless the ground speed control lever is in neutral and the blades are disengaged.
4. Check the mower blades for any damage or abnormal wear. If replacement is required, replace in sets so that they are balanced.
5. Check the tire pressure on all four tires. Do not exceed the recommended maximum indicated on the tire.
6. Check the belts for wear and correct tension. See page 15 for instructions.
7. Check engine oil and air filters as recommended in the engine manufacturer's manual.

Children

1. Never allow children to operate or ride on mowers.
2. Always keep children at a safe distance when operating or servicing a mower
3. Make sure to always look out for children before you make turns or reverse.
4. Never let children or untrained people operate or service the equipment. Local regulations may restrict the age of the operator



WARNING! Do not use your BEAST lawn mower to carry passengers. Keep bystanders, helpers, pets and children at a safe distance from the machine while it is in operation. Inspect the area where the equipment is to be used and remove all objects such as rocks, toys, and wires which can be thrown by the machine causing serious injury or death.



Wear appropriate clothing including hard hat, safety glasses and hearing protection. Long hair, loose clothing or jewelry may get tangled in moving parts.

Mower Inspection

For your safety, inspect the lawn mower before each use. Before you begin your inspection, be sure the following conditions are met: the lawn mower should be on a level surface, with the ignition switch off, the key removed, the brake set, and the blades disengaged. Also, disconnect the spark plug wires from the spark plugs and ground them against the engine to prevent inadvertent starting.

1. Walk around the mower and look for any fluid spills or leaks on or underneath the mower. Remove any and all excessive debris, dirt, and fluids.

Preparation—Safety Precautions

1. Evaluate the terrain to determine what accessories and attachments are needed to properly and safely perform the job. Only use accessories and attachments approved by BEAST.
2. Never operate the mower on slopes greater than 15 degrees.
3. Inspect the area where the equipment is to be used and remove all objects such as rocks, toys, and wire which can be thrown by the machine causing serious injury or death.
4. People, pets, and most importantly children must not be near the area being mowed. Do not operate the mower in their presence.
5. Never operate mower with damaged guards, shields or covers.
6. All users of the mower must be alert and pay attention to safety alerts, symbols, and safety signs.
7. Be sure to inspect mower before each use.
8. Always use roll bar when possible and never remove or modify the roll bar in any way or form.
9. Be sure to always wear your seatbelt when the roll bar is raised. **DO NOT** wear the seatbelt when the roll bar is down.
10. Check the controls and shields to make sure that they are functioning properly before operating. Do not operate if any are damaged or missing.
11. Never operate with discharge deflector raised, removed or altered, unless a grass catcher is being used.
12. Install, and maintain in working order, a spark arrester before using equipment on forest-covered, grass-covered, or brush-covered unimproved land.

Gasoline and other fuels—Safety Precautions

Use extra care when handling gasoline and other fuels as they are flammable and vapors can explode.

1. Only use gasoline approved containers for storage and keep out of reach from children.
2. Do not fill fuel tank completely full. Overfilling may result in fuel leakage. Leave a reasonable amount of space for fuel to expand.
3. If fuel is spilled, do not start the engine. Move the mower away from the area, wipe up the spill thoroughly and wait until fuel vapors have evaporated before starting engine.
4. Do not fill gasoline containers inside a vehicle or on a truck/trailer bed.
5. Never remove gas cap or add fuel when engine is running.
6. Avoid prolonged breathing of gasoline vapors.
7. Never refuel or drain the machine indoors.
8. Keep face away from nozzle and gas tank opening.
9. Keep gas and other fuels away from skin and eyes.
10. Never use the mouth to siphon gas.
11. Never refuel the mower until all moving parts on the mower have stopped.

12. Never smoke when handling fuels and stay away from an open flame where fumes can be ignited by a spark.
13. Always place gasoline containers on the ground away from your vehicles prior to filling.
14. Gasoline is harmful or fatal if swallowed.



DANGER: GASOLINE IS HIGHLY FLAMMABLE AND EXPLOSIVE. Do not add fuel while the engine is running or is hot. Keep open flames, sparks, and heat away from the fuel and store fuel in containers specifically designed for that purpose. **ADD FUEL OUTDOORS ONLY. IF THE FUEL IS SPILLED, DO NOT START THE ENGINE.** Manually push the mower away from the spill and wipe up immediately.

Equipment Operation—Safety Precautions

1. Do not operate the engine in a confined space where dangerous carbon monoxide fumes can collect. Carbon monoxide is odorless, tasteless, and can be fatal.
2. Do not operate the mower on slopes greater than 15 degrees.
3. Mow only in daylight or under good lighting conditions.
4. Make sure the mower is in neutral, parking brake is engaged, blades are disengaged, seat belt on, roll bar is raised and the operator is sitting in the proper position before attempting to start the engine.
5. Never operate on wet grass.
6. Watch for pedestrian or vehicular traffic when moving the mower while not in use (i.e., loading, unloading or transporting).
7. Never operate the mower with defective guards or shields, or without the safety devices securely mounted in place and functioning properly.
8. Be aware of discharge and never direct discharge of material toward bystanders nor allow anyone, especially children, near the mower during operation.
9. Do not change the governor settings or over speed the engine.
10. Always stop the engine when you leave the mower, even for a moment.
11. To help reduce fire hazard, keep the engine and the area around the engine free of grass, leaves or any other type of foreign material.
12. Beware of cutting edges. For safety always wear gloves when performing blade maintenance activities. Beware on multiple blade units since the rotation of one blade may cause the rotation of the other blade.
13. Do not operate the mower with the grass chute deflector in the raised position. Serious injury could occur.
14. If lightning is seen or thunder is heard in the operators vicinity, do not operate machine. Instead find shelter, as lightning may cause injury/death.
15. Never raise the mower deck while the blades are running.
16. Stop on a level ground, disengage drive, engage parking brake, and shut off engine before leaving operator's position for any reason including clearing grass catcher or unclogging the chute.
17. Stop the mower immediately and inspect blades after striking objects or if an abnormal vibration occurs and discontinue use until repaired.
18. Keep hands and feet away from cutting unit. This product is capable of amputating hands and feet and throwing objects.
19. Be alert and slow down when making turns. Also look left, right, and behind before changing directions and reversing to be sure there is a clear path.
20. Disengage blades, slow down, and drive cautiously when crossing roads and side walks.
21. Never operate mower under the influence of alcohol and drugs.
22. Use care when loading or unloading the machine into a trailer or truck.
23. Use care when approaching blind corners, shrubs, trees, or other objects that may obstruct vision.
24. Always disengage blades when not in use.
25. Never listen to music with headphones/earphones while operating the mower.

Slope Operation—Safety Precautions

1. Do not mow on slopes greater than 15 degrees.
2. Be extremely careful when operating the mower on a slope. Reduced traction could cause sliding.
3. Do not stop or start suddenly when going uphill.
4. Slow down and use caution when making turns and when changing direction on slopes.
5. Do not operate a riding mower near steep slopes, ditches, or water. Use a walk behind mower or a hand trimmer for these areas.
6. Roll bar should be raised and locked with seat belt buckled even before engine is turned on.
7. Should it be necessary to lower the roll bar, seat belt should not be used.
8. If tires lose traction, disengage the blades and drive slowly and cautiously off the slope.
9. Use extreme care with attachments as they can change the stability of the mower and cause loss of control.
10. Slow down and drive extra carefully on hillsides. Be sure to drive in the recommended direction on hillsides. Turf conditions can affect the machine's stability.
11. The parking brake may not hold the mower if parked on a slope.

IMPORTANT! The mower belts are adjusted to ensure the blades stop turning within seven (7) seconds of releasing the blade control lever. If you are making any belt adjustments whatsoever, for your safety and the safety of others around you, you must ensure the belts are re-adjusted to achieve this design specification.

GASOLINE IS HIGHLY FLAMMABLE AND EXPLOSIVE. FUEL LEAKS, A LOOSE FUEL TANK, OR A LOOSE FUEL VALVE CAN LEAD TO SEVERE INJURY OR DEATH. DO NOT OPERATE THIS MOWER IF ANY COMPONENT OF THE FUEL SYSTEM IS LOOSE OR LEAKS GASOLINE!

DANGER: Do not bypass, modify, alter or disconnect the safety system. Make sure that the safety interlock system is fully operational each time before mowing.

Before setting up your Z-BEAST mower, disconnect the spark plug wires from the spark plugs and ground them against the engine to prevent inadvertent starting. This step should be taken as a precaution whenever you are working on this machine.

Before attempting to use your mower, make sure you are familiar with all of the components and have read the manual.

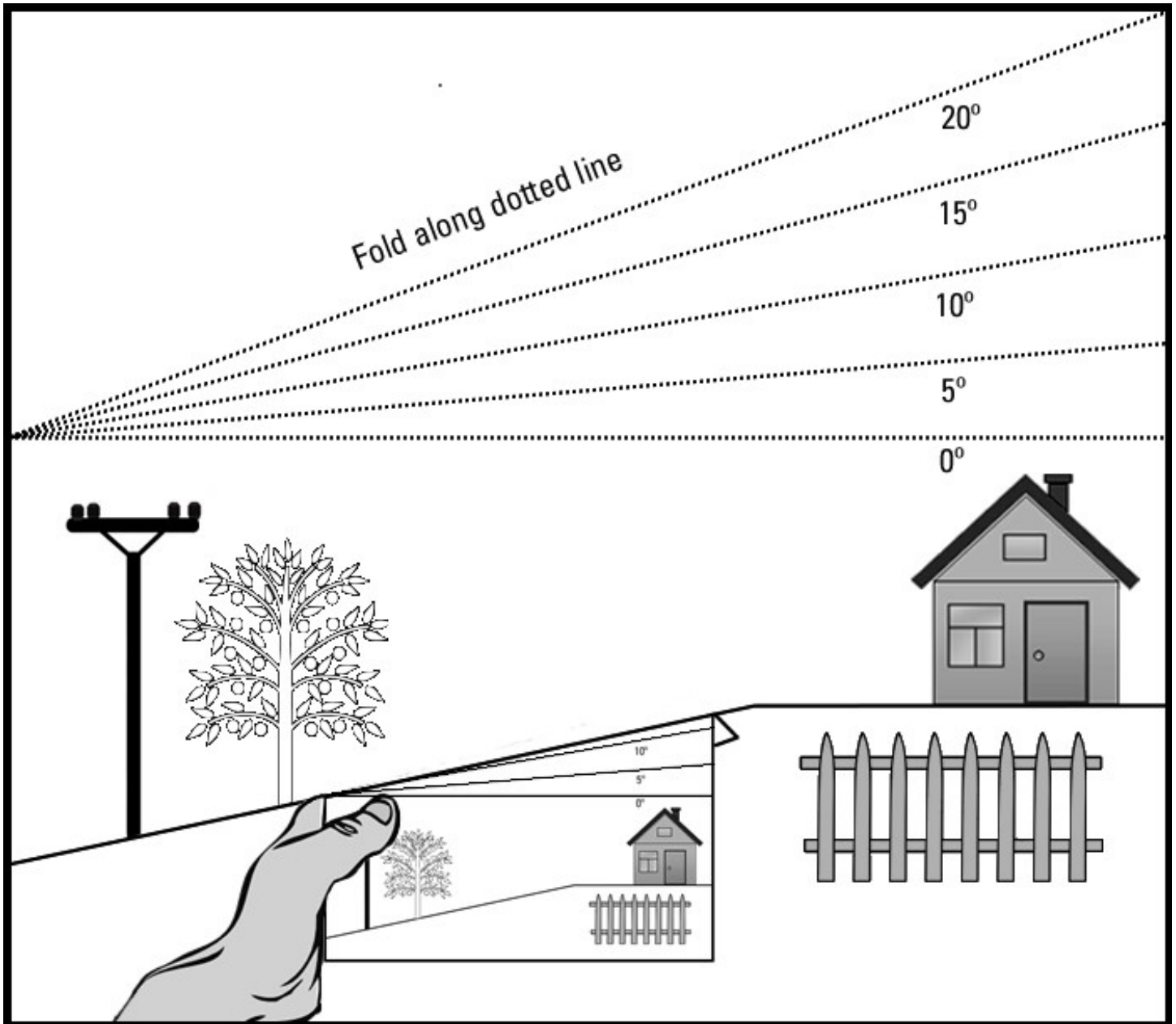
Need Help?

Parts, Service
and Technical Assistance call:

1-919-550-3221

1-800-393-0668

www.beastpowerequipment.com



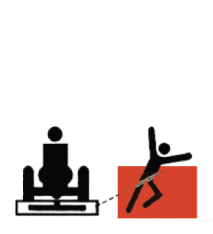
The maximum slope angle you can safely operate your mower on is 15 degrees. Do not exceed 15 degrees with your mower.

1. Line up the side of this page with a vertical object to gauge the angle of the slope.
2. Fold this sheet along the dotted line and verify the slope is not in excess of 15 degrees.

Safety Decal Identification

The labels shown below are located on your mower to warn you of potential hazards and provide you with important safety information. If these decals become difficult to read or are missing from the mower, please contact GXi Parts & Service, LLC at 1-919-550-3221 or 1-800-393-0668 or www.beastpowerequipment.com for a replacement.

⚠ DANGER / PELIGRO



OBJECTS HIDDEN IN THE LAWN CAN BE THROWN BY THE MOWER BLADE. THROWN OBJECTS CAN CAUSE SERIOUS INJURY.

- CLEAR LAWN OF ALL DEBRIS BEFORE MOWING
- DO NOT OPERATE THE MOWER WITHOUT EITHER THE DISCHARGE GUARD OR THE ENTIRE GRASS CATCHER IN PLACE
- WEAR EYE PROTECTION
- KEEP PEOPLE AND PETS AWAY

OBJECTOS OCULTOS EN EL CÉSPED PUEDEN SER LANZADOS POR LA CUCHILLA. LOS OBJETOS LANZADOS PUEDEN CAUSAR LESIÓN SERIA.

- QUITAR EXCOMBROS DEL CÉSPED ANTES DE PODARLO
- NO OPERAR LA PODADORA SIN QUE ESTEN EL PROTECTOR DE DESCARGA Y EL COLECTOR DE CÉSPED EN EL LUGAR APROPIADO
- USAR PROTECCIÓN PARA LOS OJOS
- MANTENER PERSONAS Y MASCOTAS ALEJADAS

⚠ DANGER / PELIGRO

KEEP HANDS AND FEET AWAY!
MANTENER MANOS Y PIES ALEJADOS




⚠ DANGER / PELIGRO



OPEN BELTS & FANS. STOP ENGINE BEFORE REACHING UNDERNEATH.

CORREAS Y VENTILADORES ESTAN EXPUESTOS. PARAR EL MOTOR ANTES DE MANIPULAR POR DEBAJO.

⚠ DANGER / PELIGRO



MOVING BELTS AND PULLEYS CAN CAUSE SERIOUS INJURY. DO NOT OPERATE ENGINE WHILE SHIELD IS REMOVED.

LAS CORREAS Y POLEAS EN MOVIMIENTO PUEDEN CAUSAR LESIÓN SERIA. NO OPERAR EL MOTOR MIENTRAS EL PROTECTOR ESTÉ REMOVIDO.

⚠ DANGER / PELIGRO

When adjusting or changing belts, clutch must be adjusted so blades stop within 7 seconds. If blades will not stop, inspect and replace damaged brakes.

Cuándo se ajusten o cambien las correas, el embargue debe ser ajustado para que las cuchillas se paren en 7 segundos, si las cuchillas no se paran, inspeccionar y reemplazar el freno dañado.

⚠ DANGER PELIGRO



- Do NOT mow when children or others are around.
- NEVER carry children even with the blades off.
- NO corte el césped cuando los niños u otras personas presentes.
- NUNCA lleve los niños, incluso con hojas de fuera.
- NE tondez pas quand les enfants ou les autres sont autour.
- NE transportez jamais d'enfants, meme avec des lames au large

⚠ DANGER PELIGRO

AVOID INJURY OR DEATH FROM ROLLOVERS

Keep roll bar locked in the raised position and use seat belt.

NO ROLLOVER PROTECTION WHEN ROLL BAR IS DOWN

Lower the roll bar only if necessary. Do NOT wear the seat belt with the roll bar lowered.

Raise the roll bar when clearance allows.

Always use safe driving practices and do not operate on slopes greater than 15°.

Read the owner's manual and follow all slope operation instructions and warnings.

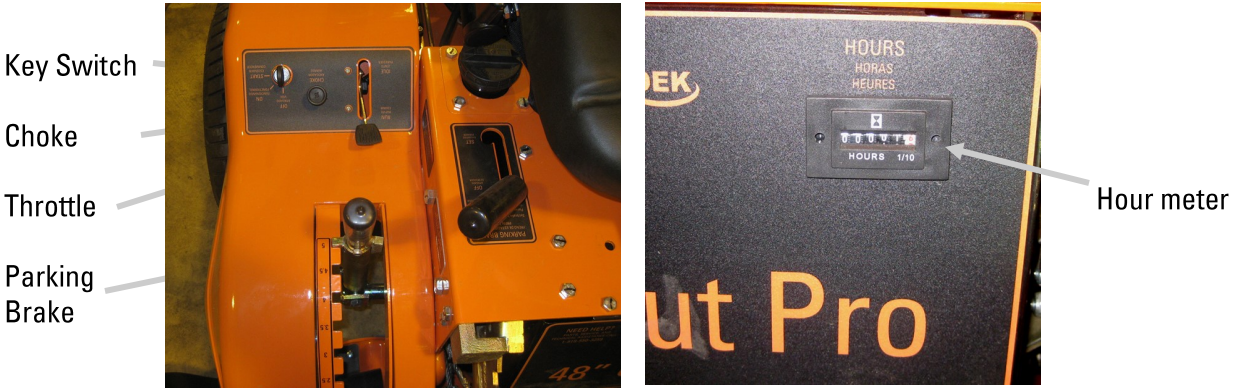
Feature	Models
	48Z
Product Type	Residential, 0-turn
Cutting Width	48-inch
Engine	See engine manufacturer's manual
Engine Start	Electric
Transmission Type	Dual hydrostatic
Transmission Mfg	Peerless
Mower Speeds	Infinitely variable
Deck Type	Floating, quick change
Cutting Height	1.5– 5 inches(½-inch increments)
Blade Engagement	Manual clutch
Blade Tip Speed	18,750 ft/min
Anti-Scalping Rollers	2 front
No. Blades/ Length	3, 16-inch blades
Control System	Dual control lever
Fuel/Capacity	Gasoline/3.76 Gallons
Rear Drive Tires	20-inch X 8-inch turf tread
Front Caster Tires	13-inch X 5-inch smooth tread
Brake System	Internal hydraulic and mechanical park
Weight	Approx. 664 lbs.
Height/Length	72 inches x 75 inches

**Z-BEAST** Finish Mower

Throughout this manual, instructions are given on the operation of your Z-BEAST mower. We recommend that while going through this manual, you have your mower available for quick and easy access in order to orient yourself with the controls, maintenance and orientation of different parts. Please read through the manual before operating.

Control Panel

Below, you will find a diagram of the control panel. Please take the time to familiarize yourself with the mower controls.



Lawn Mower Component Identification

(Some components may appear different than shown, depending on the model.)



Please indicate the part that you are missing:

Other _____

Date of purchase _____

Model #: _____

Serial #: _____

Name

Address

Phone

Email

Comments:

IMPORTANT: Please include your receipt. Without a receipt, your order will be delayed. You may also email us at:

customerservice@gxioutdoorpower.com

Fax: 1-919-550-3277

Tel: 1-800-393-0668

If emailing, please scan in your proof of purchase.

Starting the Engine

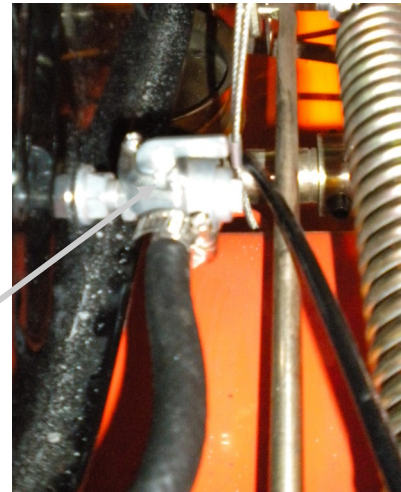


Before attempting to use your mower, make sure you are familiar with all of the components and have read the manual.

DANGER: Exhaust contains poisonous carbon monoxide, a colorless and odorless gas. Breathing exhaust can cause loss of consciousness and may lead to death. Do not operate the engine in a confined space where dangerous carbon monoxide fumes can collect.

NOTE: Be sure to add fresh unleaded gasoline and fill the engine to the proper level with manufacturers recommended motor oil before starting your mower.

1. Make sure the shut off valve, located at the bottom of the tank, is in the ON position.



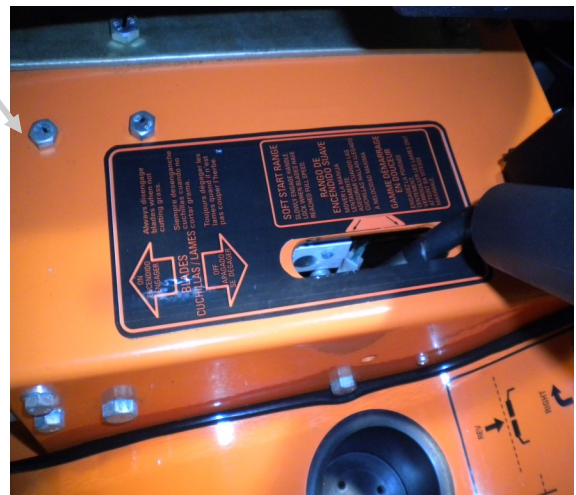
2. Make sure the brake is set and the 2 control handles are spread open into their neutral position.



3. Make sure the blade control lever is in the OFF position.

4. Pull CHOKE and set the throttle to its mid-point.

5. Turn the key clockwise to the START position and allow it to return to the ON position when the engine starts.



6. When the engine starts to run and the key returns to the ON position, push CHOKE off.


Operating the Mower

1. Make sure the brake has been moved to the OFF Position.
2. Pull both control handles to the center.
3. To drive the mower forward, push both handle bars forward away from the chest. The forward speed is directly proportional to the degree these handles are moved forward.
4. To turn the mower left, push to the right handle in front of the left handle or the left handle more towards the neutral position than the right handle.
5. To turn the mower right, perform the handle movements described in step 4 above with except with the opposite handle position.
6. To stop the forward motion of the mower, move both the handles to the center/neutral position.
7. To drive the mower backwards, pull both handle bars backwards toward the chest.
8. To turn backwards to the right or left, repeat the steps in 4 or 5 above except in the opposite direction.
9. To zero degree turn to the right, push the left handle forwards and the right handle backwards.
10. To zero degree turn to the left, push the right handle forwards and the left handle backwards.
11. When in the neutral position, the hydraulic system prevents the mower from moving easily. However, on a grade, the mower can move very slowly (with the engine off or running). Be sure to set the manual parking brake any time the mower is left unattended or is being transported.
12. When the handles are in the middle position they can be pushed away from each other to lock the mower in the neutral .

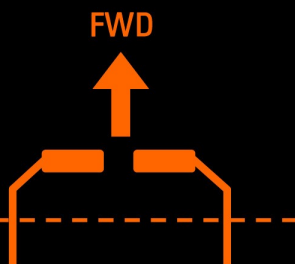
OPERATION INSTRUCTIONS
INSTRUCCIONES DE SERVICIO
INSTRUCTIONS DE FONCTIONNEMENT

- Read operator's manual before using mower
- Avoid sudden turns
- Lea el manual del operador antes de usar la podadora
- Evitar giros bruscos
- Opérateur de lire le manuel avant d'utiliser la tondeuse
- Évitez de tourner rapidement

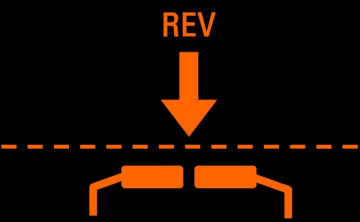
STOP/BLADES OFF
DETENER/CUCHILLA APAGADO
ARRÊTER/LAMES SE DÉGAGER




FWD



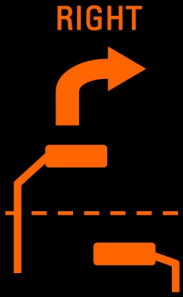
REV



LEFT



RIGHT



Changing the Height of Cut

Your mower is equipped with an easily adjustable floating deck, which can be adjusted for cut heights approximately 1½ inches to 5 inches in approximaely ½-inch increments. The deck height adjuster is located on the right side of the mower.

How to Change the Cut Height

1. Extend the blade control lever by pulling it up.
2. Pull the lever out to the left to shift the deck up or down to the desired height.
3. When desired height is chosen lock the deck by pushing the handle back into the lock position.
4. After deck height is changed the lever should be pushed back down to its original position.



Note: After mowing, remember to pull the deck to its highest position to avoid scraping and any other kind of damage to the blades or deck.



Mowing



WARNING! Thoroughly inspect the area where you plan to use the mower. Look for items such as stones, sticks, wire, and other foreign objects. If struck by the mower, these and other objects may become projectiles that could lead to serious injury or death. Clear area of all debris.

Keep people and pets at a safe distance.



WARNING! Do not operate the mower with defective guards, shields, or without the safety devices securely in place.

1. When the mower is in position on the area to be mowed, move the throttle to its full speed.
2. **SLOWLY** push the blade control lever forward to the ON position.
3. Begin mowing as described on the previous page, always using safe/comfortable speeds.
4. To stop the blades, pull the blade control lever back to the OFF position.

The Soft Start feature is critical to maintaining belt, clutch, and engine life. NEVER "slam" the blade on/off handle from off to on without pausing an adequate time in the soft start range.

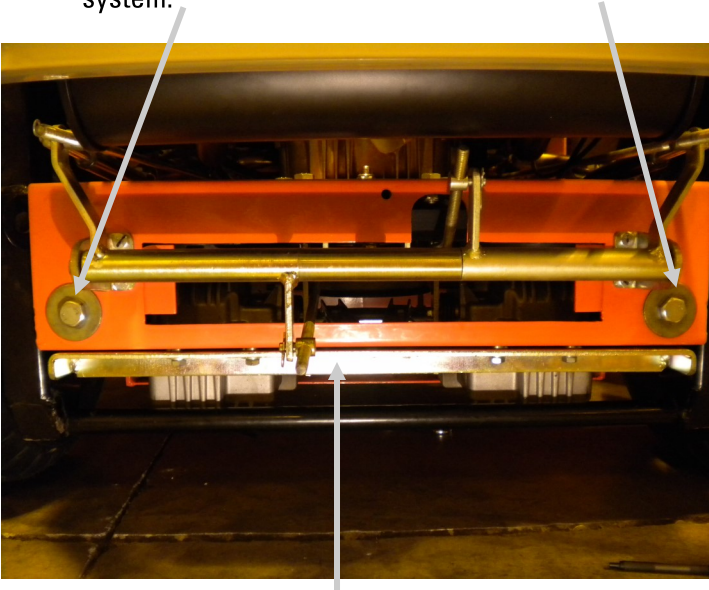
IMPORTANT! The mower belts are adjusted to ensure the blades stop turning within seven (7) seconds of releasing the blade control lever. If you are making any belt adjustments whatsoever, for your safety and the safety of others around you, you must ensure the belts are re-adjusted to achieve this design specification.

Disengaging Hydrostatic Drive Units

Before physically moving the mower when the engine is **NOT** running, the hydrostatic drive units need to be disengaged into free-wheel mode.

To disengage these hydro units:

1. Unscrew both of the bolts that keep in the hydro system.



2. If necessary bump the bottom part of the mower with a tool lightly where the hydro systems are located to ensure the system is disengaged

CAUTION! Never bump, hit or push the actual hydros.

To return to operation mode:

1. Place the bolts back in place on the back of the mower.
2. Screw them back to how they were originally.

Return to Neutral

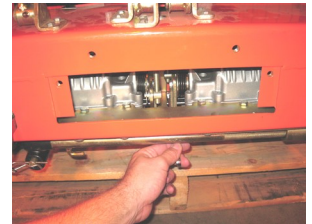


DANGER! Make certain the engine comes to a complete stop before putting you hands in the access panel.

If the mower creeps or will not stop as desired when the handles are in neutral position, adjustments are necessary.

CAUTION: Be sure the engine is OFF before you open the hydro access panel.

1. Remove the bolts to access hydro panel.
2. Using an 8 mm wrench, reach through the bottom of the hydro panel to the return-to-neutral set pin bolts. Loosen bolts on the side that needs adjusting.



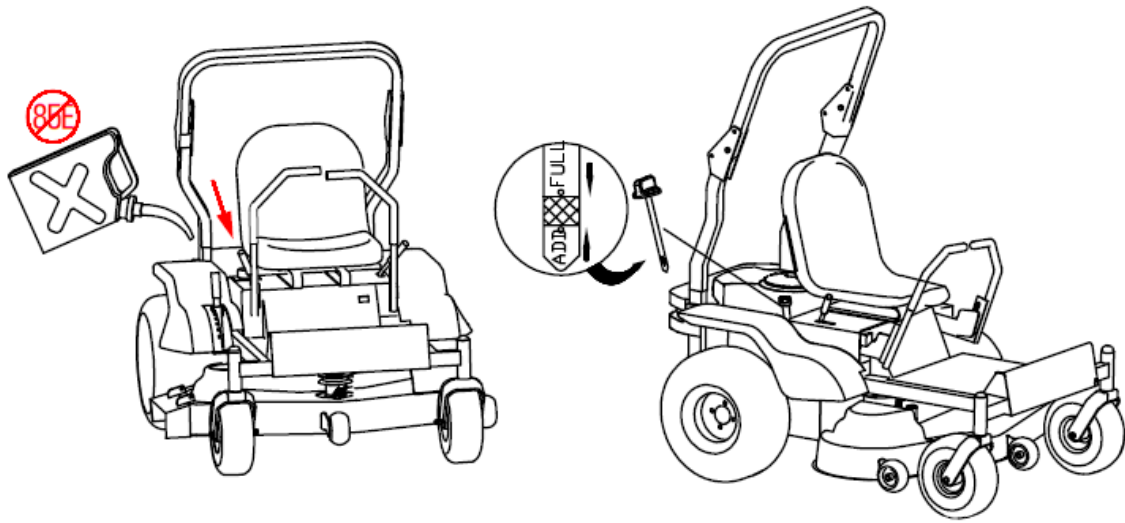
3. Be sure the brake is in the OFF position. In a safe operator position, start the engine.
4. With the engine running, slowly move the handle on the side needing adjustment until that side comes to a complete stop. If the mower creeps forward, pull handle in reverse, If the mower creeps backward, pull the handle forward.

5. When the mower stops moving completely the hydro is in the neutral position.
6. Turn off the engine.
7. Slowly tighten the bolts without moving the plate.
8. With the bolts tightened, move to a safe operator position and start the engine.
9. If the creep has returned, repeat the process. Multiple iterations may be required.



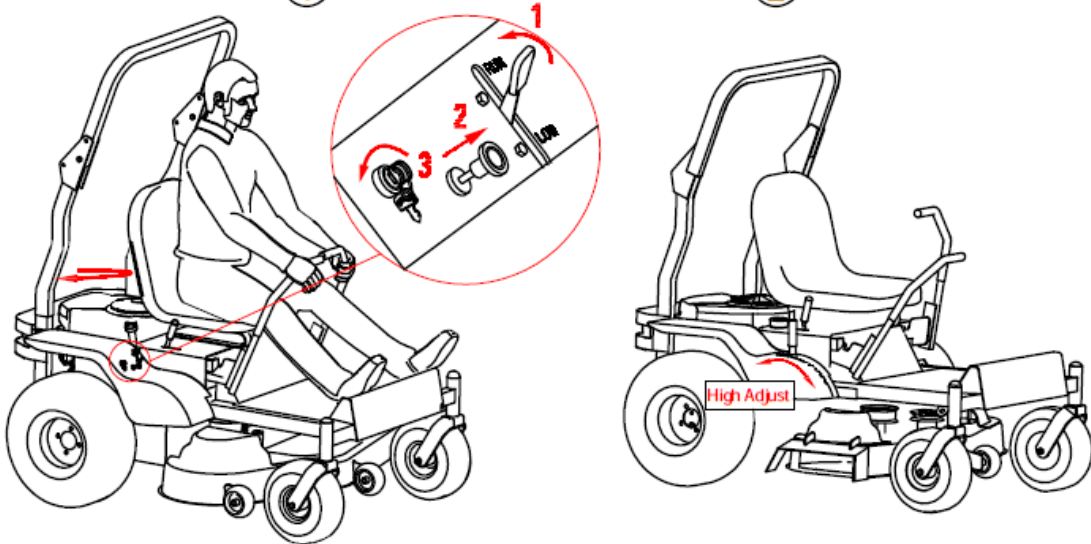
10. Reinstall hydro access panel.

48ZB Quick Start Guide



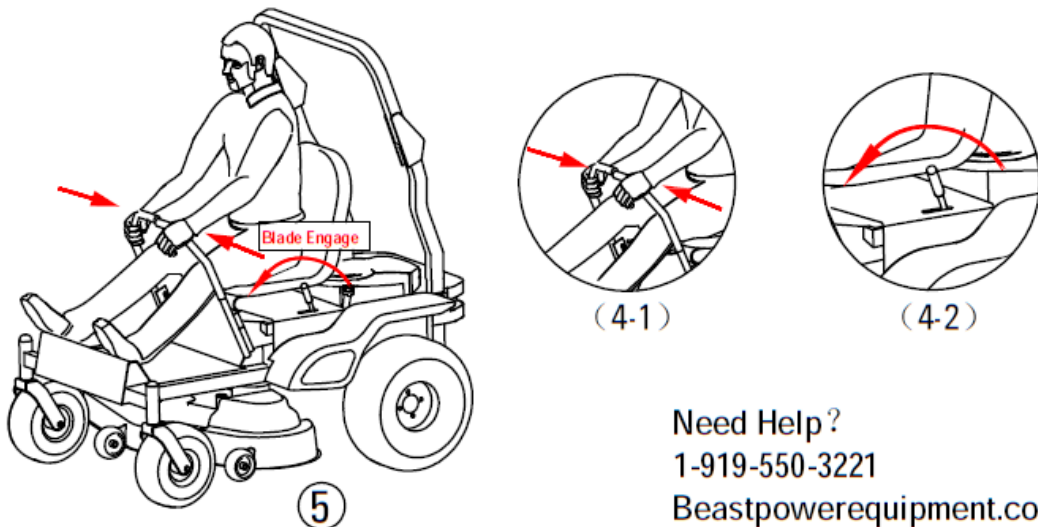
1

2



3

4

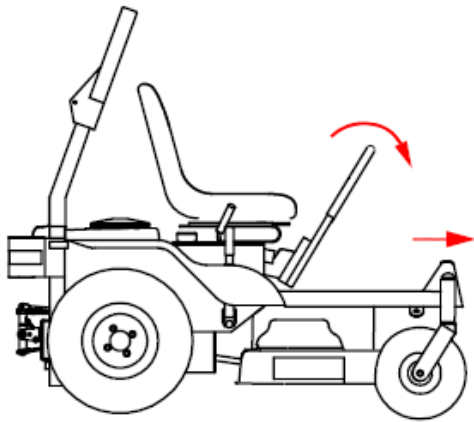


5

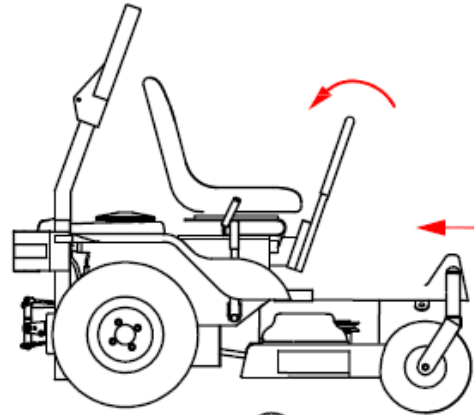
(4-1)

(4-2)

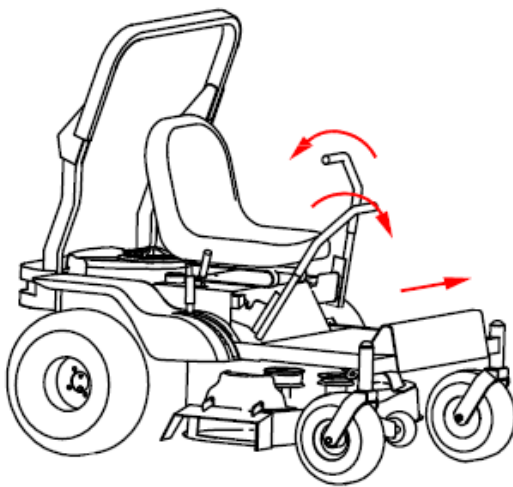
Need Help?
1-919-550-3221
Beastpowerequipment.com



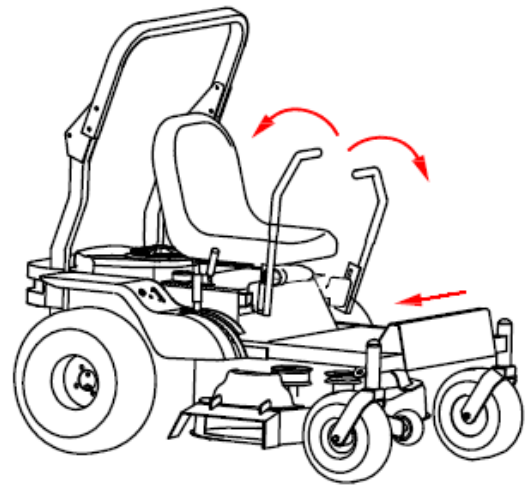
6



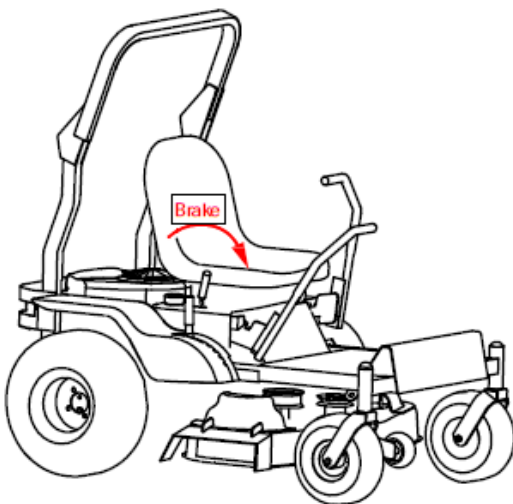
7



8



9



10

⚠ DANGER PELIGRO

- Do NOT raise when children or others are around.
- NEVER carry children over with the deck off.
- NO come al stopped cuando los niños o otras personas presentes.
- ¡NUNCA lleve los niños, incluso con la paja de la zona.
- NE levantar gas cuando los niños o las otras personas están.
- NE transportar personas o niños, incluso con el feno en la zona.

⚠ DANGER

DISCHARGE MAY CAUSE SEVERE INJURY OR PROPERTY DAMAGE.

¡CUIDADO PUEDE CAUSAR LESIONES GRAVES O LOS DAÑOS MATERIALES.

⚠ DANGER PELIGRO

AVOID INJURY OR DEATH FROM ROLLOVERS

Keep roll bar locked in the raised position and use seat belt.

NO ROLLOVER PROTECTION WHEN ROLL BAR IS DOWN

Lower the roll bar only if necessary. Do NOT wear the seat belt with the roll bar lowered.

Raise the roll bar when clearance allows.

Always use safe driving practices and do not operate on slopes greater than 15°.

Read the owner's manual and follow all slope operation instructions and warnings.



⚠ DANGER/PELIGRO

KEEP HANDS AND FEET AWAY!

MANTENER MANOS Y PIES ALEJADOS

The Importance of Maintenance

Regular maintenance is essential to ensure your mower continues to deliver safe and high-quality performance.

To help you properly care for your mower, the following pages include a recommended maintenance schedule, routine inspection procedures, and simple maintenance procedures using basic hand tools. Maintenance is the responsibility of the owner and must be performed regularly. More difficult service tasks or tasks that require special tools are best handled by a recommended service technician or other qualified mechanic.

The maintenance schedule described on page 14 applies to mowers used under normal operating conditions. If you operate your mower under severe conditions, such as sustained prolonged use or high-temperature operations, or use it in unusually wet, dusty or rocky conditions, consult your servicing dealer for recommendations applicable to your individual needs and use.

Be sure to use genuine Z- BEAST mower replacement parts when servicing your mower to assure the best quality, safety and performance.

Need Help? Parts, Service and Technical Assistance Call: 1-919-550-3221

Fuel



DANGER: Gasoline is highly flammable and explosive. Do not add fuel while the engine is running or is hot. Keep open flames, sparks, and heat away from the fuel and store fuel in containers specifically designed for that purpose. Add fuel outdoors only and if the fuel is spilled, do not start the engine. Manually push the mower away from the spill and wipe up immediately.

Refer to the Engine Owner's Manual for the type of fuel to use.

A fuel shut off valve is located on the bottom of the fuel tank. It is recommended that the fuel be shut off when transporting between job sites and when storing the mower for extended periods of time.



CAUTION! Before making any adjustments and/or servicing to your Z-BEAST mower, make sure the mower is on a level surface, with the ignition switch off, the key removed, the brake set, and the blades disengaged. Also, disconnect the spark plug wires from the spark plugs and ground them against the engine to prevent inadvertent starting.

If you are performing adjustments or maintenance after operating the mower, allow the unit to cool and always wear protective clothing.

Tire Pressure

Incorrect tire pressure may cause the mower to pull to one side and/or result in uneven cut. Use caution when filling the tires. NEVER exceed the recommended maximum tire pressure as stated on the tires.

Air Filter

Refer to the Engine Owner's Manual for the recommended maintenance.

Engine Oil

CHECK ENGINE OIL BEFORE EACH USE. Refer to the Engine Owner's Manual for the type of oil to use, oil change intervals, and the proper procedures to check and change oil.

Blades

Inspect blades on a daily basis for nicks, bends, and excessive wear. If the blades are worn, cracked, bent, or damaged, replace them before using the mower. Choose genuine Z-BEAST mower replacement blades to ensure quality and performance. (See page 16 for blade removal instructions.)

When sharpening the blades, sharpen only the cutting edges and try to maintain the original angle of the blade. Do not make the cutting edge razor sharp. Remove the same amount from each side of the blade so that balance is maintained.



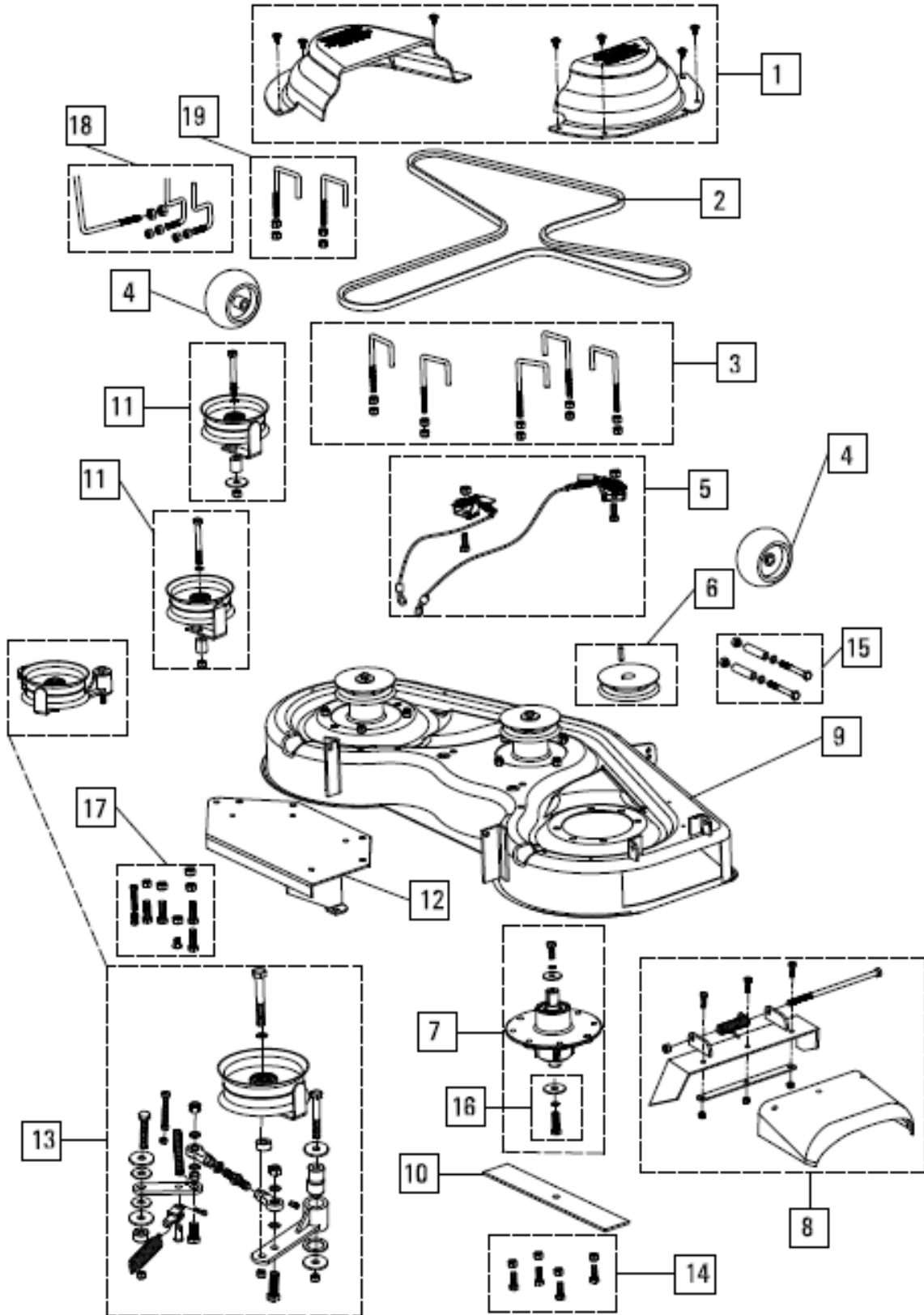
CAUTION: Always wear work gloves when performing blade maintenance and beware of the cutting edges. Be sure the engine is off, the key removed, and the spark plug wires are disconnected from the spark plugs to prevent inadvertent starting.

Item	Procedure	Time Interval				
		Break-in (first 5 hrs)	Every 8 hrs (daily)	Every 40 hrs (weekly)	Every 100 hrs (Bi-weekly)	Every 200 hrs (monthly)
Belts	Inspect (adjust if needed)	X	X			
Blades	Inspect and/or Sharpen		X			
Engine Air Filter	Inspect (see Engine Owner's Manual)		X			
Engine Cooling Areas	Clean (see Engine Owner's Manual)		X			
Engine Oil	Check (see Engine Owner's Manual)	X	X			
	Change (see Engine Owner's Manual)					
Engine Oil Filter	Change (see Engine Owner's Manual)					
Engine Spark Plug	Inspect (see Engine Owner's Manual)					
Fuel Filter	Replace				X	
Fuel Line	Check				X	
Grease Fittings	Refer to page 19					
Hardware	Check for proper tightness	X		X		
Mower Main Frame	Remove debris from under belt cover		X			
Safety Interlock System	Check Operations and Switches		X			
Tires	Check Air Pressure			X		
Spindle/Blade Brakes			X			

Cleaning the Mower

It is recommended that the Z-BEAST lawn mower be cleaned on a daily basis. Excessive accumulation of dirt, debris, oil, etc. on cutting units, drives, mufflers, and engine may present a potential safety hazard.

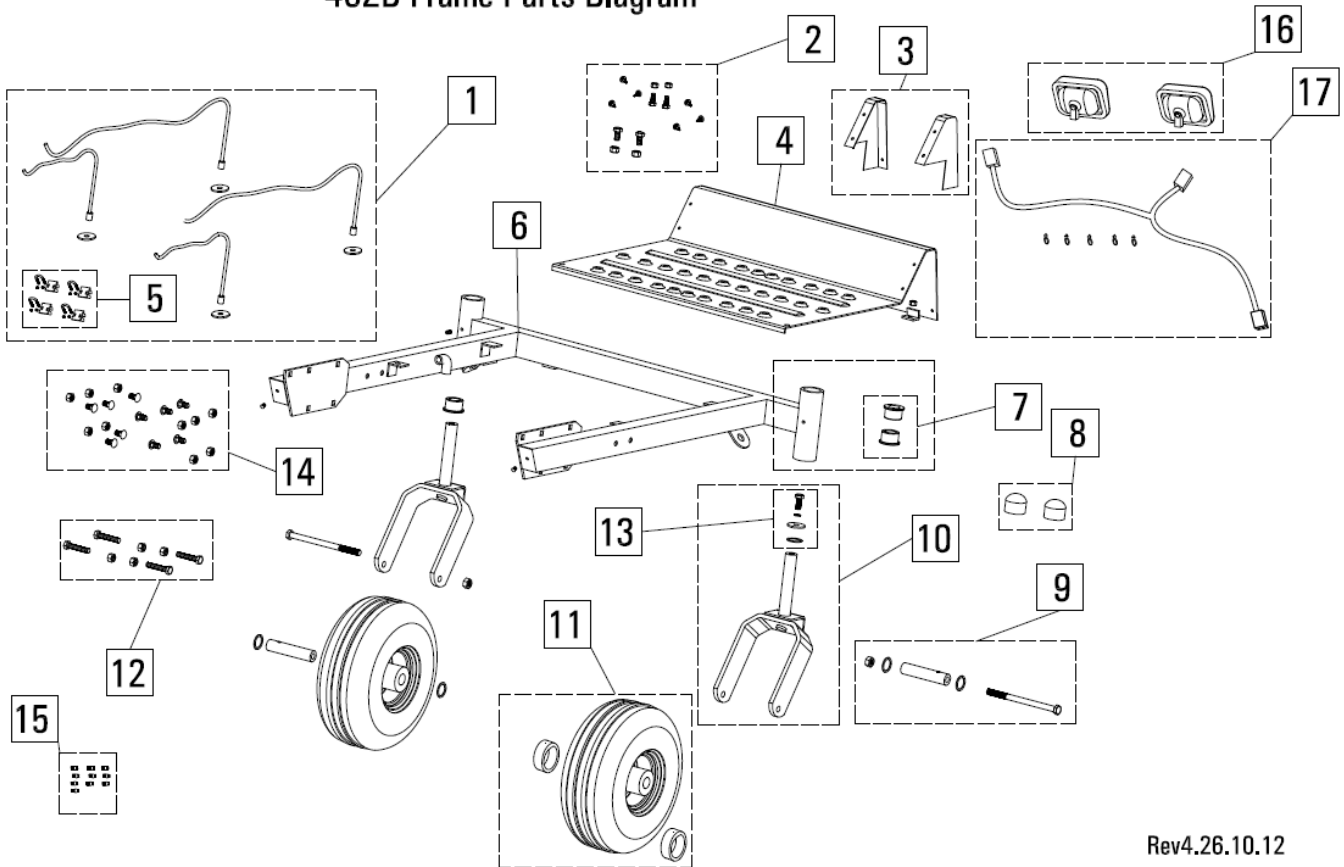
48" ZB Deck Parts Diagram



Rev4.26.10.12

48ZB" Deck Parts Diagram Key		
Item #	Gxi Part Number	Description
1	SP11-000083	Pulley guard, 48Z, left and right black plastic guard, screws included
2	M10-000822	48Z Deck Belt - 1360
3	SP11-000009	Belt retainer kit, Z, belt retainers and hardware....
4	M10-000458	Scalping wheel, 5" plastic..
5	SP11-000035	Spindle brake kit, 48Z, left and center brakes, springs, cables, hardware..
6	SP11-000084	Pulley, blade spindle, 48Z, cast, black, includes key..
7	SP11-000015	Spindle assembly, aluminum, 48Z, fully assembled, non-servicable, includes pulley retaining hardware and blade retaining hardware..
8	SP11-000057	Discharge chute assembly, 48Z
9	M12-000926	48" Deck Assembly - Orange-3mm thickness
10	SP12-000184	Blade, 48Z of 3
11	SP11-000085	Idle pulley, 5", includes bolt, locking nut, belt retainer, spacer, and reinforcement washer for necessary applications
12	M10-000434	Clutch plate, 48Z, orange
13	SP11-000058	Clutch assembly, 48Z, complete clutch mechanism with all hardware and springs... ..
14	SP11-000086	Spindle fastening kit, set of 4 bolts and nyloc nuts
15	SP11-000087	Hardware kit, scalping wheel, set of 2 bolts, washers, locking nuts, and bushings.....
16	SP11-000088	Blade hardware kit, set of 3 blade mounting bolts, washers, and lock washers..
17	SP11-000089	Clutch plate hardware kit, includes 5 bolts and locking nuts for attaching clutch plate to deck.
18	SP12-000185	Belt retainer kit, Z, engine pulley, rear retainer, 2 side retainers with hardware
19	SP12-000186	Belt retainer kit, Z, intermediate between engine and deck, 2 belt retainers and hardware

48ZB Frame Parts Diagram

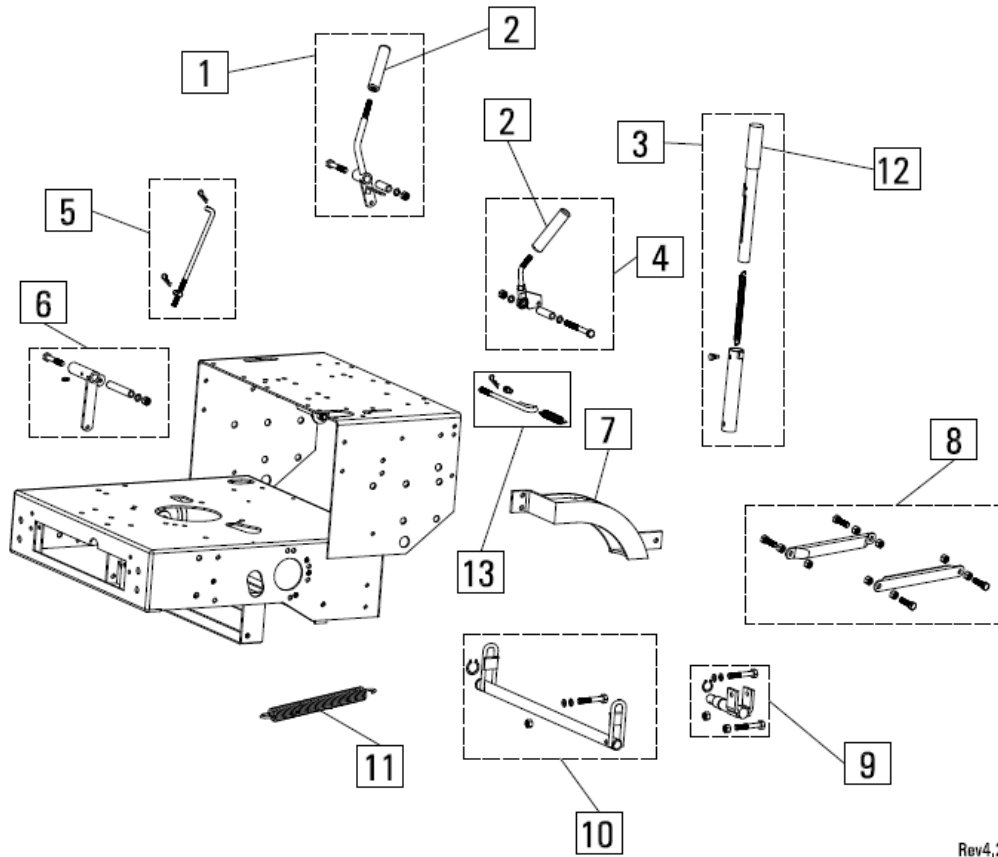


Rev4.26.10.12

48ZB" Frame Parts Diagram Key

Item #	Gxi Part Number	Description
1	SP11-000039	Deck cable kit, 48Z, all 4 subassembled cables, includes cable clamps
2	SP11-000132	Hardware kit, floorboard, 48Z, includes bolts to fasten floorboard to frame and screws to mount floorboard end caps..
3	SP11-000133	Floorboard end caps, set, 48Z..
4	SP12-000134	Floorboard, 48ZB, with headlights, includes label.....
5	SP11-000135	Hardware kit, Z, cable clamps to fasten deck height cables..
6	SP11-000136	Frame, front, 48ZB, orange, includes brass wheel bushings, and grease fittings....
7	SP12-000187	Bushing, brass, front wheel caster, Z, set of 4
8	SP11-000137	Bearing cap set, Z, black plastic, set of 2 front wheel bearing cap..
9	SP11-000138	Hardware kit, 48Z, front wheel axle bolt and axle hardware..
10	SP12-000188	Front wheel yoke, 48ZB, orange, with assembly hardware to frame, axle NOT included
11	SP11-000033	Tire assembly, 48Z, front tire mounted to rim, with bearings pressed into rim hub, ribbed 13" x 5" x 6" tire
12	SP11-000139	Hardware kit, Z, fasten frame to control panel end caps, and attach deck height set bracket to right hand side of frame..
13	SP11-000140	Hardware kit, Z, W, retaining hardware for front wheel caster, includes, bolt, fender washer, and lock washer..
14	SP11-000141	Hardware kit, Z, frame to chassis mounting hardware, contains 10 custom carriage bolts and locking nuts..
15	SP12-000189	Grease fittings, set of 10
16	SP12-000209	Headlight bezel, lense, and bulb assembly, set of 2
17	SP12-000208	head light wire harness and wire harness line clips

48"ZB Chassis Diagram-Blade, Brake, Deck Lift Handle Systems

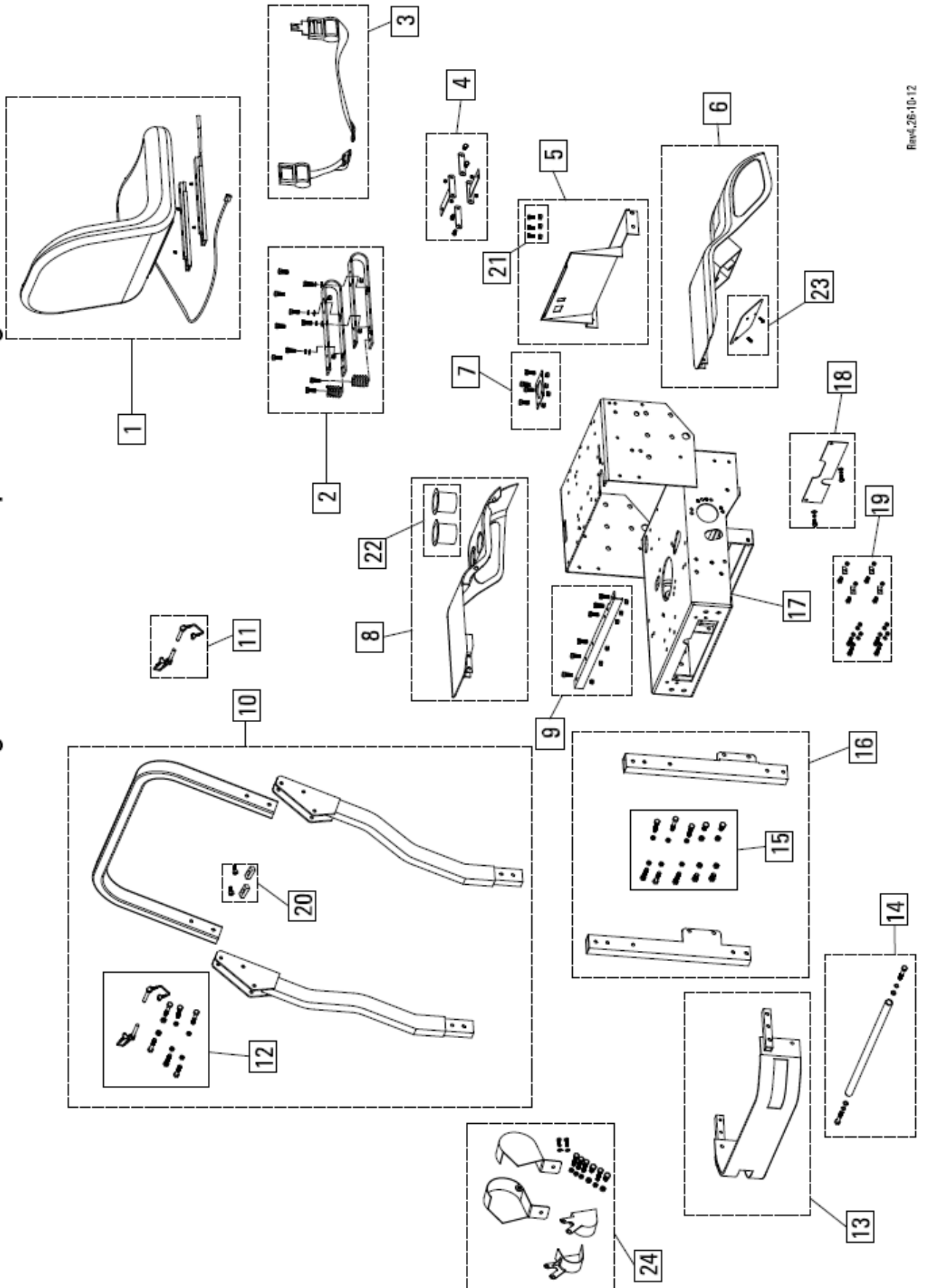


Rev4,26-10-12

48ZB" Chassis Diagram -Blade, Deck Lift Handle Systems Key

Item #	Gxi Part Number	Description
1	SP11-000008	Handle assembly, blade on/off, Z, includes pivot bushing, vinyl handle grip, and mounting hardware....
2	M10-000023	Handle grip, vinyl coated, Z, vinyl coated steel, blade and brake handle grip..
3	SP11-000014	Handle assembly, deck lift, Z, includes upper handle, lower handle, return spring, guide bolt, and vinyl grip
4	SP11-000010	Handle assembly, park brake, Z, includes pivot bushing, vinyl handle grip, and mounting hardware..
5	SP11-000125	Rod kit, intermediate deck engagement, Z, includes threaded rod end and cotter pins..
6	SP11-000007	Pivot kit, blade engagement, Z, pivot assembly between deck handle and deck clutch, includes pivot bushing and hardware..
7	SP11-000126	Deck height set bracket, ZB, orange, with height label..
8	SP11-000127	Stabilizer assembly, rear, 48Z, black, left and right stabilizers, with hardware..
9	SP11-000128	Mount, deck lift handle, Z, with roll pin..
10	SP11-000129	Deck height pivot bar, Z, with roll pin..
11	M10-000356	Spring, Z, deck height lift assist spring
12	M10-000812	ZTR height adjustment Grip
13	SP12-000257	Rod kit, deck engagement, Z, included threaded rod end and cotter pin

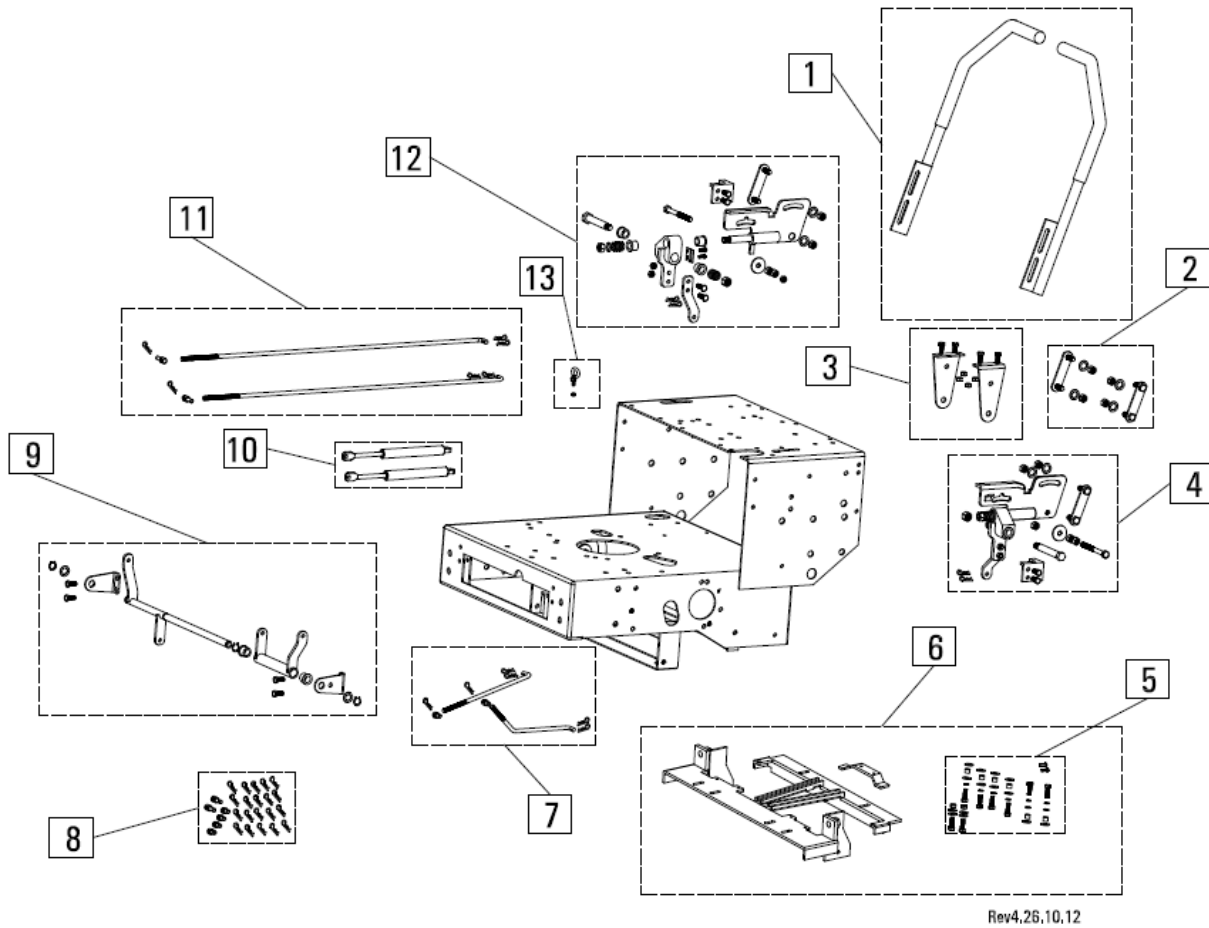
48"ZB Chassis Diagram-Chassis Components Diagram



Rev# 26-10-12

48ZB" Chassis Diagram -Chassis Components Diagram Key		
Item #	Gxi Part Number	Description
1	SP11-000001	Seat assembly, 48ZB, BEAST logo, with sliders and operator presence switch..
2	SP11-000090	Seat U mount assembly with suspension springs and hardware
3	M10-000538	Seat belt, Z, retractable
4	SP11-000094	Seat belt hanger, retainer straps, and hardware
5	SP12-000091	Panel assembly, 48ZB, front fuel tank cover, with hardware and label..2012 upgrade part
6	SP11-000092	Fender assembly, 48ZB, orange, right hand side, with label and controls cover plate.
7	SP11-000095	Panel assembly, fuel tank neck cover, ZB, orange, with hardware
8	SP11-000093	Fender assembly, 48ZB, orange, left hand side, with label, and 2 cup holders.
9	SP11-000096	Reinforcement support, seat bracket, Z, black, with hardware
10	SP11-000020	Roll bar assembly, 48Z, left and right middle sections, upper section, hardware, pins, and labels....
11	SP11-000028	Roll bar pin kit, Z, contains 2
12	SP11-000097	Hardware kit, roll bar, 48Z, hardware for middle and upper section roll bar attachment, includes 2 roll bar pins..
13	SP11-000098	Rear engine guard assembly, 48ZB, black, plastic tube caps, and label
14	SP11-000031	Guard, rear hydro guard with hardware....
15	SP11-000099	Hardware kit, roll bar, 48Z, hardware for lower and middle section roll bar attachment
16	SP11-000100	Roll bar assembly, 48Z, left and right lower sections, hardware
17	M10-000347	Chassis, 48ZB, orange....
18	SP11-000101	Rear access cover, chassis, ZB, orange, with hardware and labels..
19	SP11-000102	Hardware kit, fender mounting hardware..
20	SP11-000103	Roll bar silencers, Z, upper silencers, with hardware, use Loctite during assembly (Loctite not included)
21	SP12-000181	Hardware kit, for panel assembly SP11-000091
22	SP12-000182	Cup holders, Z, black plastic, contains 2 - glue into fender (glue not included)
23	SP12-000183	Controls cover plate, 48ZB, with hardware, covers control panel on fiberglass fender
24	SP12-000158	Hydro/Final drive pulley covers, 48Z, black, with hardware

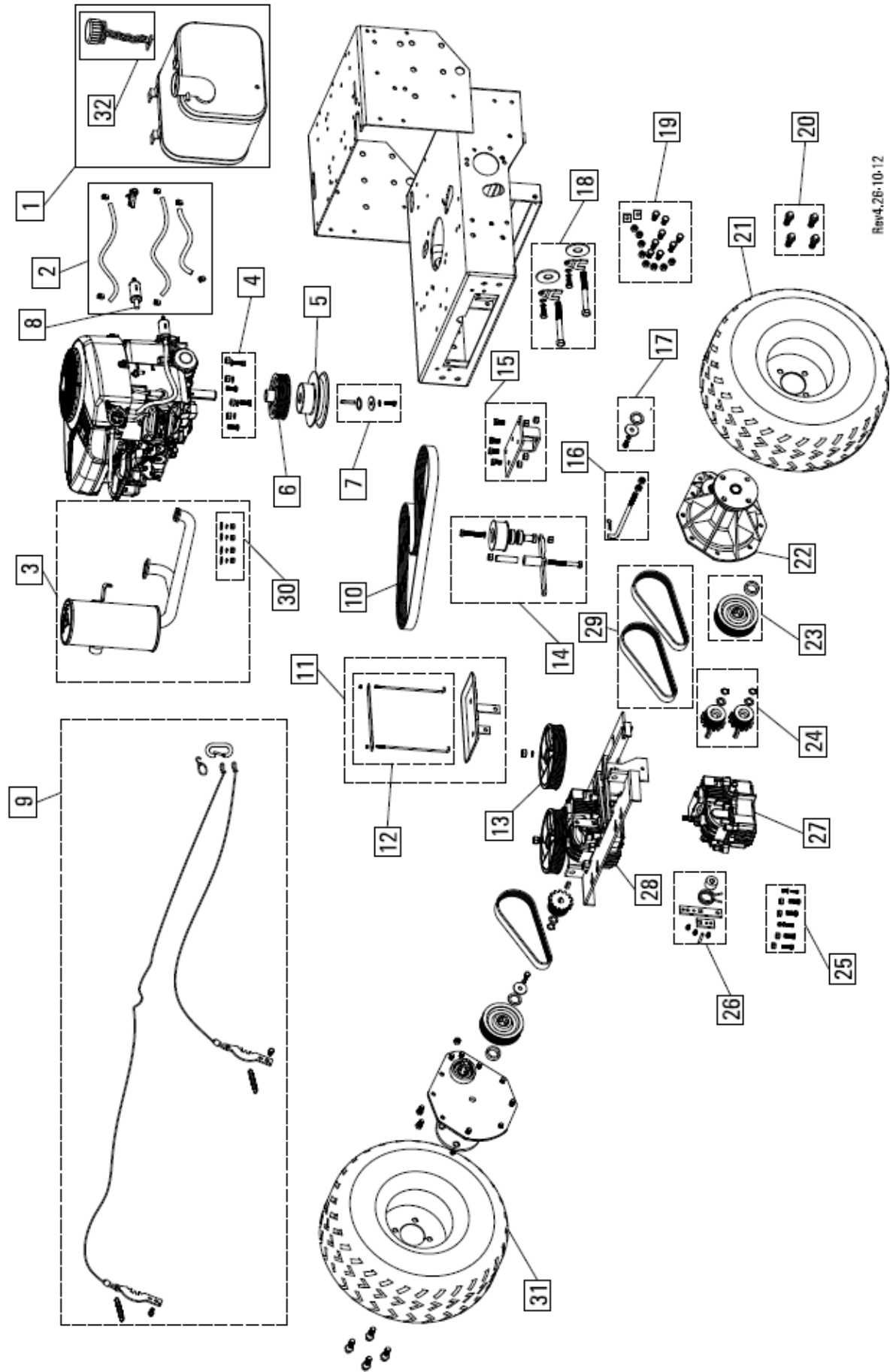
48"ZB Chassis Diagram-Hydrostatic Drive Controls



48ZB" Chassis Diagram -Hydrostatic Drive Controls Key

Item #	Gxi Part Number	Description
1	SP11-00019	Control handle assembly, Z, right and left control handles, black, textured vinyl coated
2	SP11-000117	Control handle retainer assembly, Z, set of 2 control handle retainers and hardware..
3	SP11-000118	Reinforcement kit, 48ZB, inner controls hanger set with hardware..
4	SP11-000013	Control pivot assemblby, Z, right hand side, includes all hardware, visible return to neutral block, and control handle retainer assembly
5	SP11-000119	Hardware kit, Z, W, hydro carrier to chassis fastening hardware..
6	SP11-000120	Hydro carrier kit, Z, includes center reinforcement, and hydro carrier to chassis fastening hardware...
7	SP11-000121	Rod kit, hydro control, Z, left and right rods, threaded rod ends, and cotter pins..
8	SP11-000122	hardware kit, Z, W, 2 long shaft threaded rod ends, 4 standard threaded rod ends, 20 cotter pins..
9	SP11-000027	Rear control assembly, Z, rear hydro control pivot assemblby with mounting hardware..
10	SP11-000123	Damper kit, Zm 2 control system dampers included..
11	SP11-000124	Rod kit, Z, intermediate control between handle and rear control assembly, includes
12	SP11-000012	Control pivot assemblby, Z, left hand side, includes all hardware, visible return to neutral block, and control handle retainer assembly..
13	SP11-000006	Eye Bolt Kit...

48"ZB Chassis Diagram-Power Train Diagram

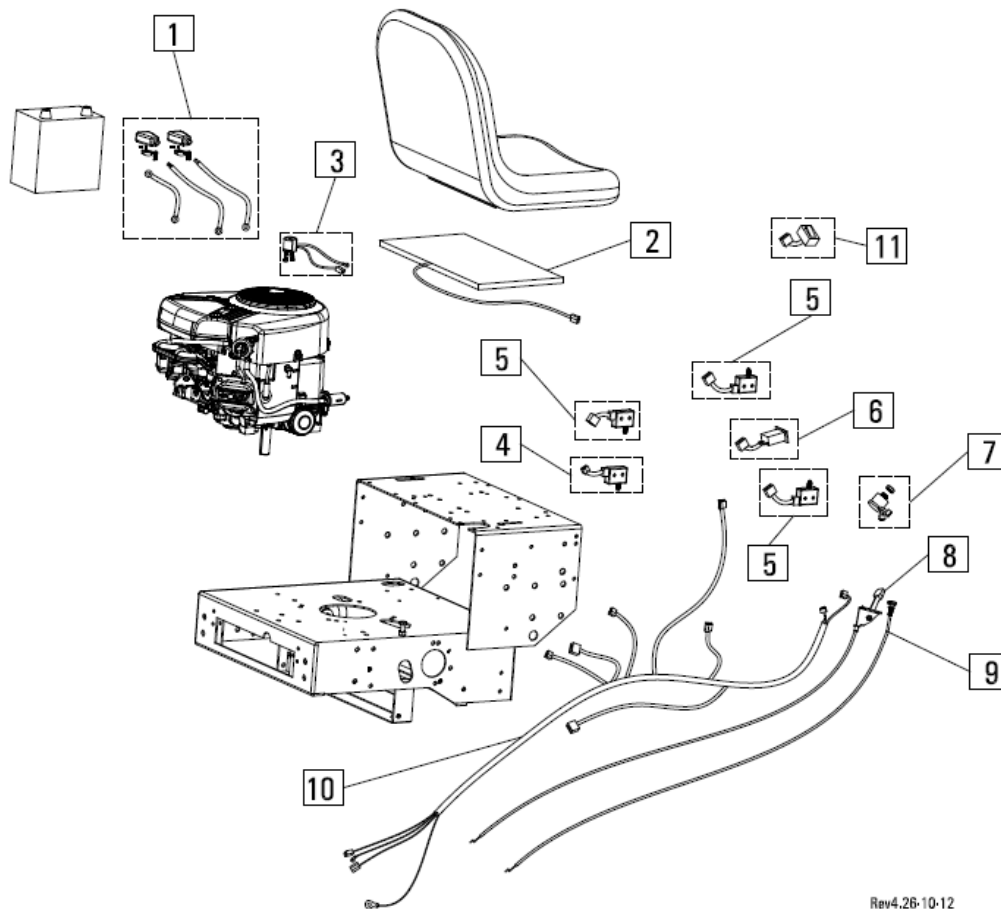


Rev 4.26-10-12

48ZB" Chassis Diagram -Power Train Diagram Key

Item #	Gxi Part Num-	Description
1	SP11-000104	Fuel tank assembly, 48Z, tethered fuel cap, fuel valve
2	SP11-000105	Fuel system kit, Z, fuel supply line, fuel valve, filter, fuel tank breather line, and 6 hose
3	SP12-000190	Muffler, 48Z, vertical canister, Briggs and Stratton 20hp Professional Series engine with hardware and gaskets
4	SP11-000106	Hardware kit, engine mounting bolts, 48Z, Briggs and Stratton 20hp Professional Se-
5	M10-000289	Pulley, engine, deck belt, 48Z, 54Z, 54F, 1" bore with keyway, black, cast..
6	M10-001215	Engine Multi V pulley S-Aluminum..
7	SP11-000107	Hardware kit, engine pulley retaining hardware, Z, W, key, washers, lock washer,
8	M10-000535	fuel filter..
9	SP11-000040	Cable kit, park brake, Z, with springs, park pawl, S hook, and mounting bolts, for
10	M10-000469	Belt, hydro input, Z, 8PK-1690
11	SP11-000108	Battery pan kit, includes tie down posts, strap, and hardware
12	SP11-000109	Battery tie down kit,Z, includes tie down posts, strap, and hardware..
13	M10-001217	Pulley, hydro, input, Z, integrated fan, Peerless spline, aluminum
14	SP11-000011	Pulley kit, hydro, input idler, Z, includes pulley, carrier arm, bushing, and hard-
15	SP11-000110	Pulley mount kit, hydro, input idler, Z, idle pulley carrier mount and hardware..
16	SP11-000111	Rod kit, hydro input tension, Z, includes threaded rod end and cotter pins..
17	SP11-000112	Hardware kit, Z, W, final drive input pulley hardware, includes washers, bolt, lock-washer, shims, use Loctite during assembly on bolt threads..
18	SP11-000113	Hardware kit, Z, hydro output belt tension hardware, includes M16 bolts, bolt locks, and bolt lock hardware
19	SP11-000114	Hardware kit, Z, W, final drive mounting hardware to chassis..
20	SP11-000115	Lug bolts, 48Z, set of 4, 1/2" x 20..
21	SP11-000004	Tire assembly, 48Z, RIGHT side rear tire mounted to rim, turf tread 20" x 8" x 8" tire....
22	M10-000819	Final drive assembly, 48Z, aluminum housing....
23	SP11-000032	Pulley, final drive, Z, splined bore, 8PK, aluminum
24	SP12-000151	Pulley assembly, hydro output, Z, 8PK, contains 2 pulleys, keys, snap rings, washers
25	SP11-000116	Hardware kit, Z, W, hydro to carrier mounting hardware, includes grade 10.9 hardware for front corner..
26	SP11-000003	Return to neutral assembly, Z, includes hardware
27	2100-006D	Hydro, Peerless 2100-006D, integrated pump motor..
28	2100-007D	Hydro, Peerless 2100-007D, integrated pump motor..
29	SP12-000191	Belt, final drive, Z, 8PK-644, set of 2
30	SP12-000192	Hardware kit, muffler, Z, W, universal
31	SP12-000193	Tire assembly, 48Z, LEFT side rear tire mounted to rim, turf tread 20" x 8" x 8" tire....
32	M10-001409	Fuel tank cap, for steel tank, plastic, with tether, sealed

48"ZB Chassis Diagram-Engine Mechanical/Electrical Controls

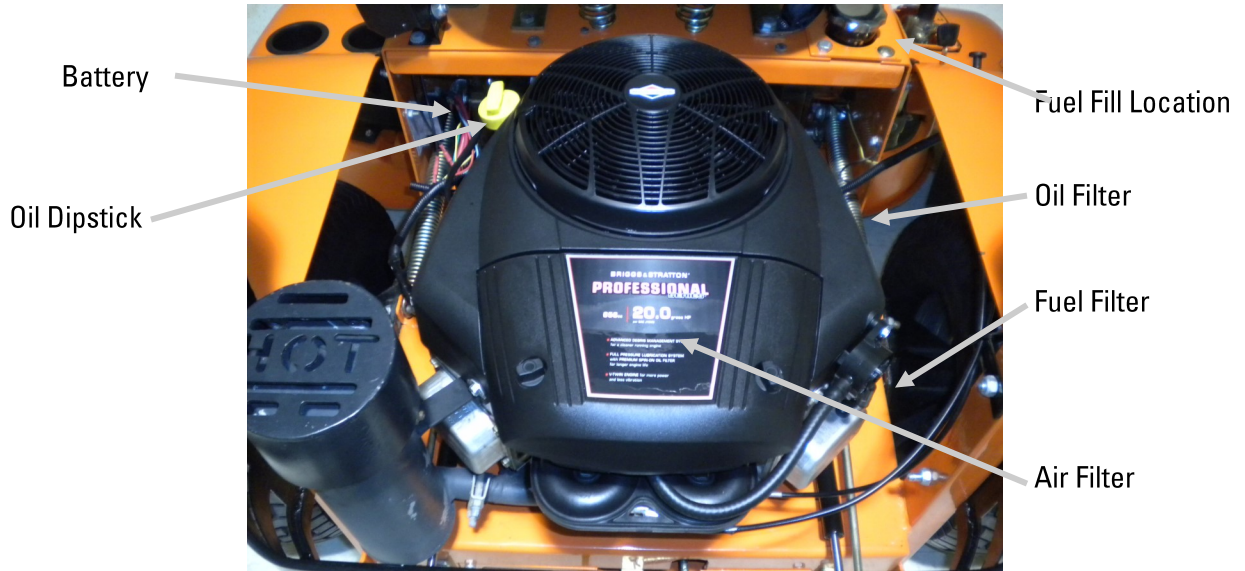


Rev4.26-10-12

48ZB" Chassis Diagram -Engine Mechanical/Electrical Controls Key		
Item #	Gxi Part Number	Description
1	SP11-000130	Battery cable set, 48Z, 54ZS, includes terminals, terminal covers, positive and ground battery cables, and solenoid to starter cable..
2	SP11-000131	Switch, seat seat safety, operator presence, 48Z..
3	M10-000881	Solenoid, starter, 48ZB, includes leads for wiring harness, Briggs and Stratton 20hp Professional Series engine
4	M10-000543	Switch, blade drive interlock, Z, W, NC, with pigtail and male plastic plug
5	M10-000544	Switch, blade drive interlock, Z, W, NO, with pigtail and female plastic plug
6	M10-000541	Hour meter, Z, W, with soldered pigtails and female plastic plug
7	M10-000539	Switch, 3 position, Z, W, with keys, 3 pin and 2 pin female plastic plug
8	M10-000307	Throttle cable, 48ZB, Briggs and Stratton 20hp Professional Series engine
9	M10-000310	Choke cable, 48ZB, Briggs and Stratton 20hp Professional Series engine
10	M12-000522	Wire harness with headlight, 48ZB, Briggs and Stratton 20hp Professional Series engine..
11	M12-001723	Light Switch Assembly with pigtail and male plastic plug

48" Z-BEAST

20HP Professional Series Briggs & Stratton V-Twin Engine



Deck Belt Tension

It is recommended to check and adjust if necessary the deck belt tension after the initial 5 hours of use on the hour meter. The new belt will seat into pulley grooves and may need adjusting. After the initial break in period, it is recommended to inspect belt tension and adjust if necessary every 8 hours. Follow the steps below to inspect belt tension. Follow ALL safety precautions mentioned in this manual when doing any maintenance on your mower. **Note: Failure to inspect and adjust the deck belt tension can result in poor mowing performance and pre-mature belt wear.**



DANGER: Before making any adjustments or servicing your mower, make sure the mower is on level ground, the blades are disengaged, the brake set, the key is removed, the engine is off and the spark plug wires are disconnected from the spark plugs to prevent inadvertent starting. If maintenance or adjustments are being performed after operation of the mower, allow the unit to cool since heat build up could cause severe burns.

Figure 1

Figure 1:

- Ensure the blade engagement handle is in the "OFF" position.
- Open the floorboard and locate the idle/clutch pulley(1) and turnbuckle(2).
- Set your deck height to its LOWEST setting (1.5 inches)

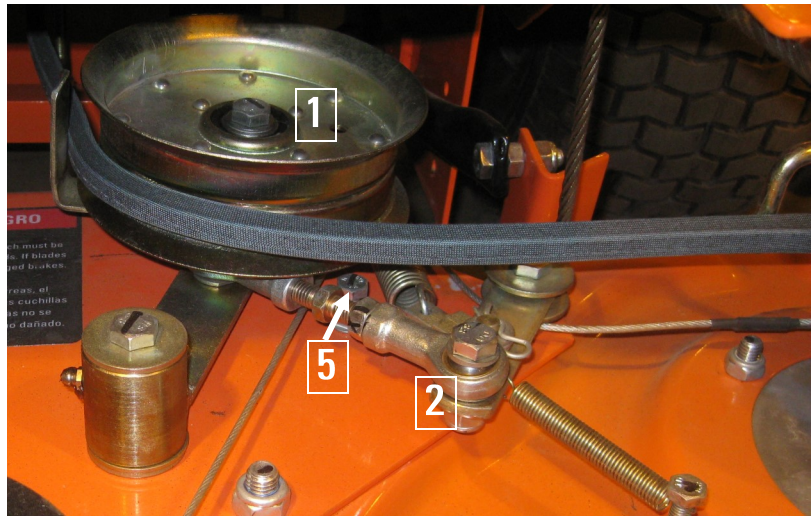
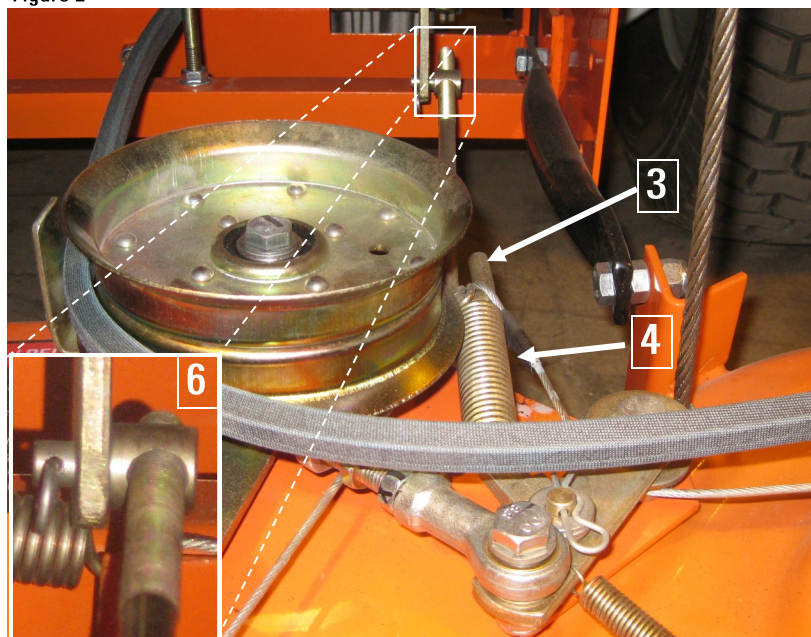


Figure 2

Figure 2:

- Check the clutch linkage pre-load.
- If the spring and linkage assembly (3 & 4) is too tight, the clutch will not return and may cause the blades to spin with blade engagement "OFF".
- If the spring and linkage assembly is too loose, the spring will contact the deck surface, or have more than 2" of vertical movement between the linkage (3) and the spring(4).
- To adjust the pre-load, remove the cotter pin and slide the linkage off the arm(6). Thread the linkage pivot in or out to set pre-load as stated above.



Deck Belt Tension

It is recommended to check and adjust if necessary the deck belt tension after the initial 5 hours of use on the hour meter. The new belt will seat into pulley grooves and may need adjusting. After the initial break in period, it is recommended to inspect belt tension and adjust if necessary every 8 hours. Follow the steps below to inspect belt tension. Follow ALL safety precautions mentioned in this manual when doing any maintenance on your mower. **Note: Failure to inspect and adjust the deck belt tension can result in poor mowing performance and pre-mature belt wear.**



DANGER: Before making any adjustments or servicing your mower, make sure the mower is on level ground, the blades are disengaged, the brake set, the key is removed, the engine is off and the spark plug wires are disconnected from the spark plugs to prevent inadvertent starting. If maintenance or adjustments are being performed after operation of the mower, allow the unit to cool since heat build up could cause severe burns.

Figure 3:

- Move the blade engagement handle to the "ON" position.
- Using your hand, press the clutch pulley (7) in the direction indicated with about 20-25lbs of pressure. Ensure that the swing arm(8) stops within 1 inch to 1.5 inches from the stop bolt(9).

Figure 3

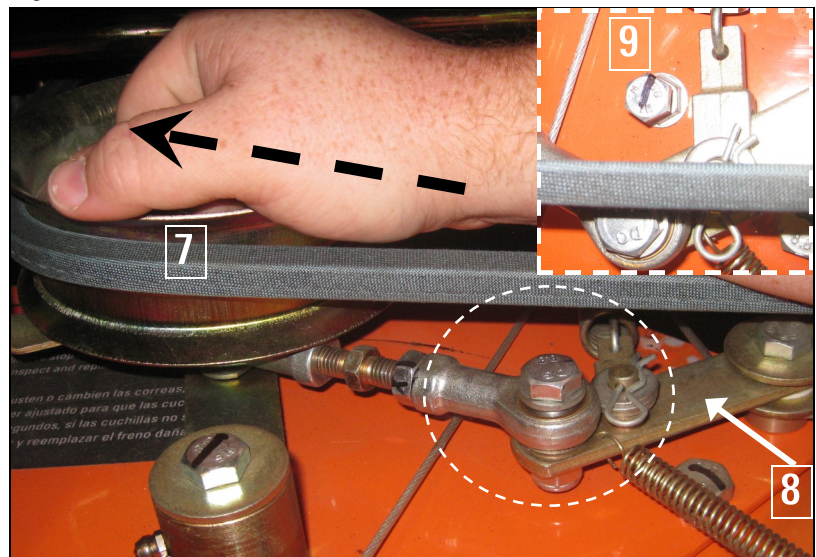
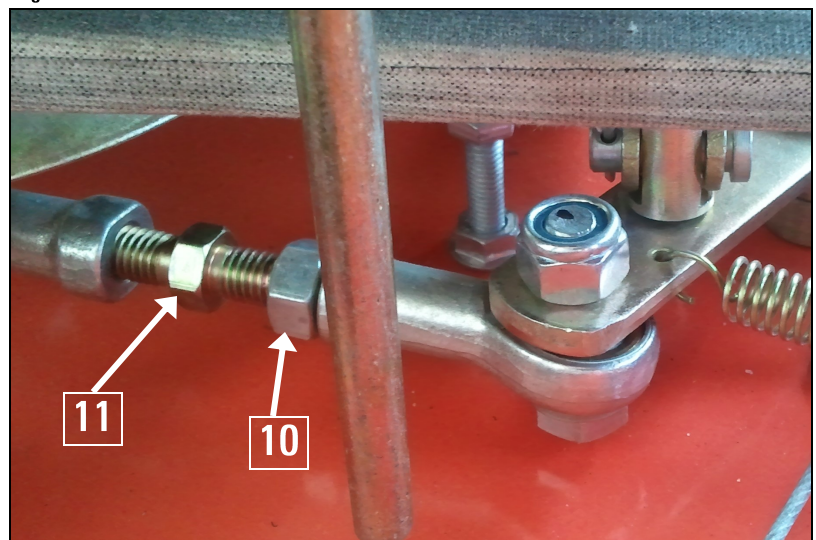


Figure 4:

- If the swing arm reaches the stop bolt (9), the tension is too loose. Move the blade engagement handle to the "OFF" position. Loosen the turn-buckle locknut (10). Adjust the turnbuckle linkage(11), extending the pulley. Move the blade engagement handle back to the "ON" position and repeat test by applying 20-25 lbs of pressure and check the stop bolt clearance. The swing arm should be 1" - 1.5" away from the stop bolt.
- If the swing arm has a clearance greater than 1.5" the tension is too tight. This may result in pre-mature belt wear, as well excess stress on the springs of the clutch. Adjust the turnbuckle as mentioned above.

Figure 4



Deck Belt

It is recommended to do a quick visual inspection of the deck belt retainers at the same interval as inspecting the deck belt tension. This check should be performed every 8 hours. The engine pulley retainer should be inspected when replacing the deck belt, or if the belt is slipping off the engine pulley.



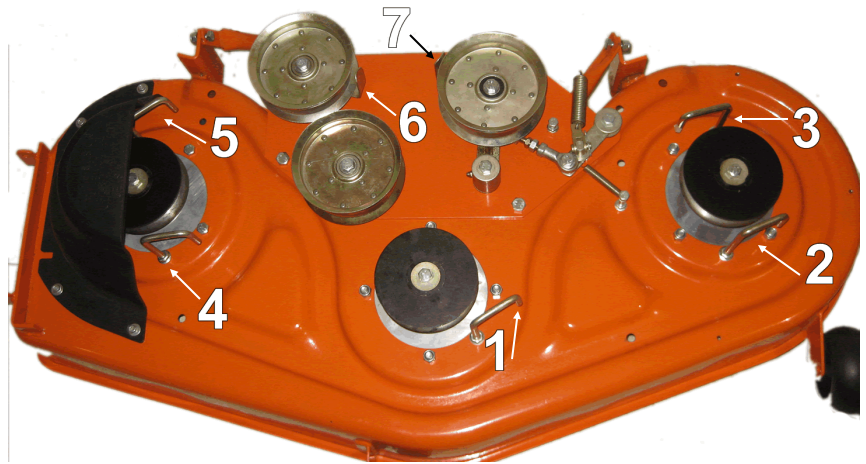
DANGER: Before making any adjustments or servicing your mower, make sure the mower is on level ground, the blades are disengaged, the brake set, the key is removed, the engine is off and the spark plug wires are disconnected from the spark plugs to prevent inadvertent starting. If maintenance or adjustments are being performed after operation of the mower, allow the unit to cool since heat build up could cause severe burns.

Verifying Deck Belt Retainers

Figure 1 :

The 48Z Beast has 7 main deck retainers.

- 5 "J" shaped retainers (1, 2, 3, 4, 5)
- 2 idle pulley retainers (6, 7)
- To adjust the retainers, loosen the top nut slightly and rotate the retainer into place. After adjusting hold the retainer in place and tighten the nut.
- To adjust the idle pulley retainers, loosen the pulley shaft slightly, slide the retainer into place and re-tighten.

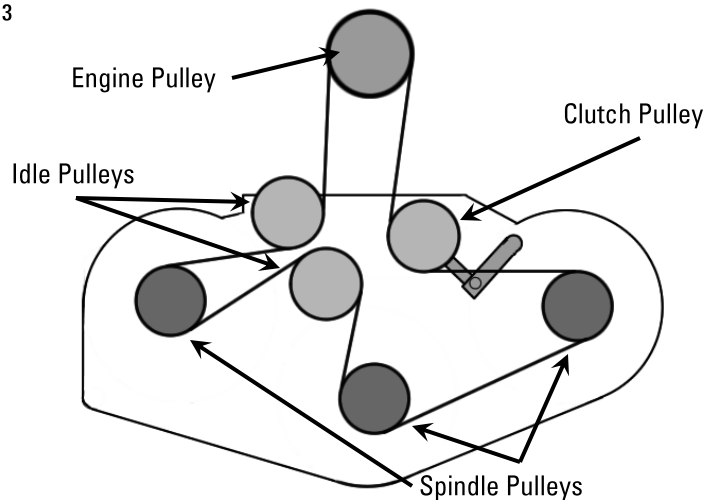


Deck Belt Routing

48ZB

- The 48ZB uses a MXV5 1360 v belt.

Figure 3



Deck Belt



Follow ALL safety precautions mentioned in this manual when doing any maintenance on your mower.

The clearances for the retainers are listed below, and measured with the blades engaged and engine OFF.

DANGER: Before making any adjustments or servicing your mower, make sure the mower is on level ground, the blades are disengaged, the brake set, the key is removed, the engine is off and the spark plug wires are disconnected from the spark plugs to prevent inadvertent starting. If maintenance or adjustments are being performed after operation of the mower, allow the unit to cool since heat build up could cause severe burns.

Verifying Deck Belt Retainers

Figure 4:

- The clearance for the "J" shaped retainers is 3/16"
- To adjust the retainers, loosen the top nut slightly and rotate into position. Hold the retainer in place while tightening the bolt.

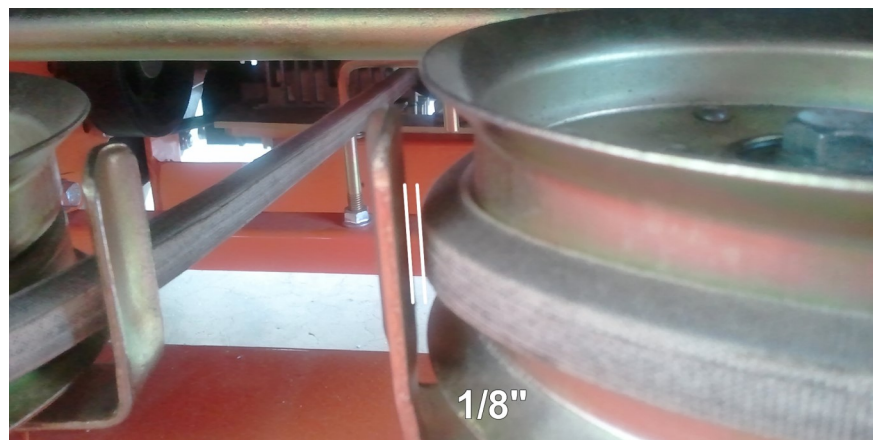
Figure 4



Figure 5:

- The clearance for the idle pulley retainers is 1/8"
- To adjust the idle pulley retainers, loosen the nut on the top of the pulley and bottom slightly. Slide the retainer into place and tighten the nuts back.

Figure 5



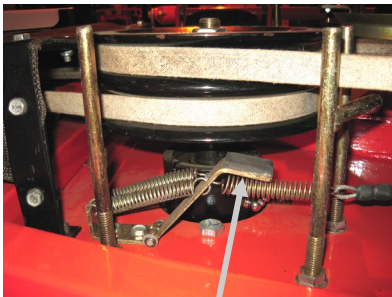
Spindle Brake Inspection and Replacement

IMPORTANT! The mower belts are adjusted to ensure the blades stop turning within seven (7) seconds of releasing the blade control lever. If you are making any belt adjustments whatsoever, for your safety and the safety of others around you, you must ensure the belts are re-adjusted to achieve this design specification.

Blade and pulley brake inspections should be performed every 50 blade on and off cycles.

Before beginning service, park the Z-BEAST on a level surface, turn the blades off, turn the engine off, set the brake, take the key out of the switch, wait an adequate time to make certain no blades are turning, and remove spark plug wires from spark plugs.

1. Engage the blade handle (make certain the engine cannot start) to pull the brakes off of the pulleys.
2. Remove the pulley guard from the deck.
3. Visually inspect the brake pads for wear. Make certain that no metal is touching the pulleys.



4. The brake pad material should be approximately 1/8-inch thick. Replace the brakes if the material is less than 1/16-inch thick.

Note: Replacing both brakes is recommended if replacement of one brake is required.

5. To replace the brake, use a pair of pliers to remove the springs.
6. Remove the two mounting bolts and disconnect the spring from the cable.
7. Discard all of these parts. DO NOT reuse springs. New brakes are equipped with new springs for proper braking.
8. Install the new brakes by reversing the procedure in steps 5 and 6.

9. Disengage the blade handle and inspect the brake contact surface. All of the brake pad contacting material should be contacting the bottom of the pulley.

Note: Springs may vary from those pictured based on the particular application.

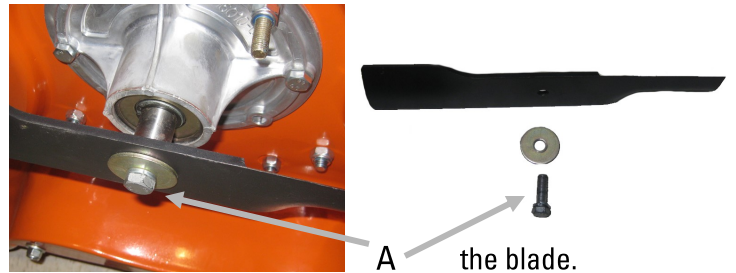
Removing the Blades

Required tools: 18mm Wrench



CAUTION! Beware of the cutting edges on the blades. The rotation of one blade may cause the other blade(s) to rotate. Always wear work gloves when handling

1. Park the mower on level ground, set the brake and block the rear wheels to prevent accidental rollback.
2. Raise the front end of the mower and place on a jack stand.
3. Use one wrench to loosen nut A while carefully holding



4. To reinstall, insert the bolt with lock washer and large flat washer into the spindle.
5. **IMPORTANT:** The number of spacers should always be the same on each blade bolt. NEVER put the spacers below the blade and NEVER straighten or weld the blades.

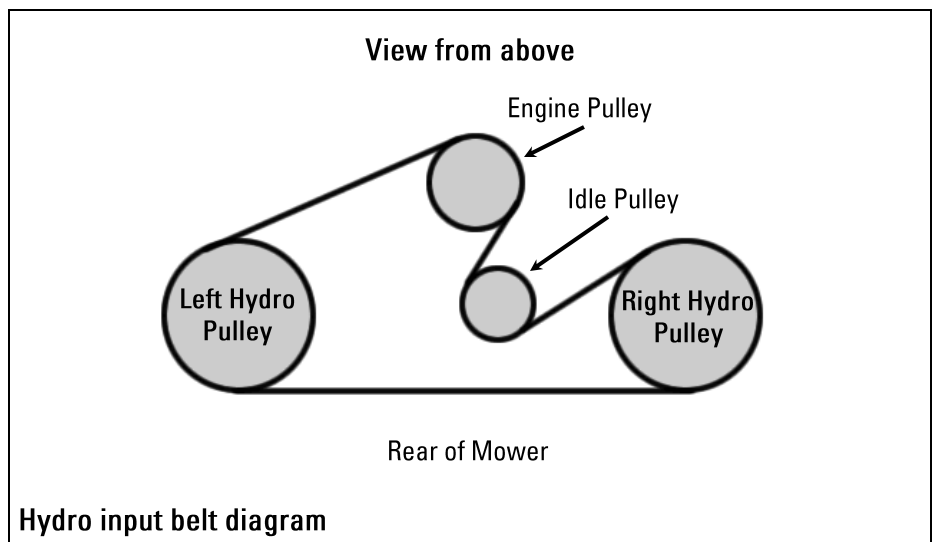
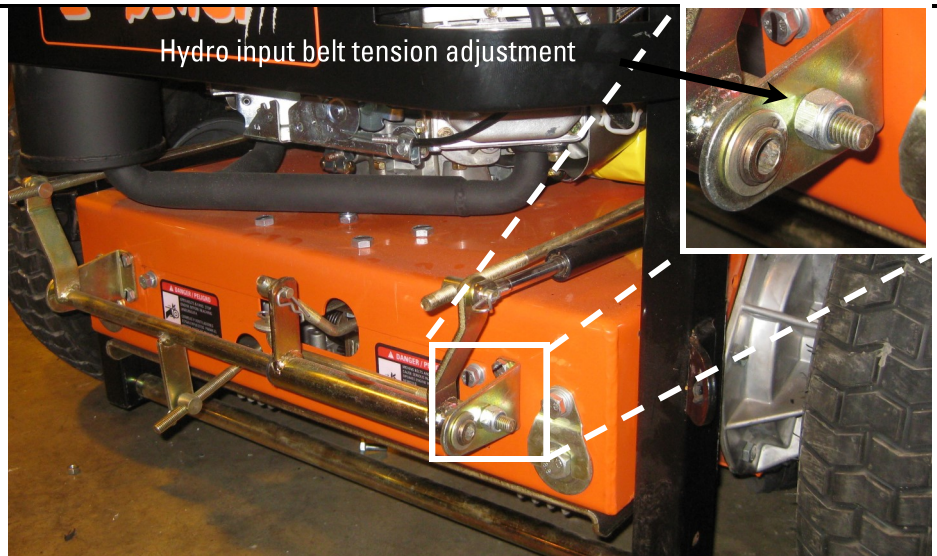
IMPORTANT! The mower belts are adjusted to ensure the blades stop turning within 7 seconds of releasing the blade control lever. If you are making any belt adjustments whatsoever, for your safety and the safety of others around you, you must ensure the belts are re-adjusted to achieve this design specification.

Engine-to-Hydrostatic Drives Belt Adjustment (Hydro Input Belt)

- The hydro input belt is located underneath the chassis at the rear of the mower. The belt should move approximately 1/8 to 3/16-inch with three (3) to five (5) pounds of pressure applied to the belt midway between the hydrostatic drive pulleys when initially installed. After approximately 1 hour of running time, verify that the belt tension is still correct and tighten if necessary

Important: Do not over-tighten the belt.

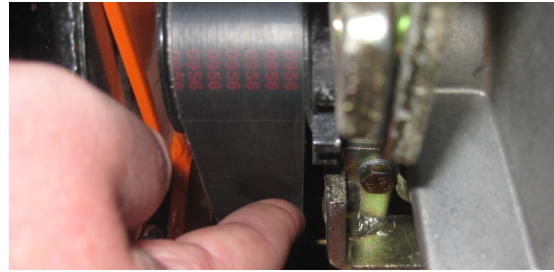
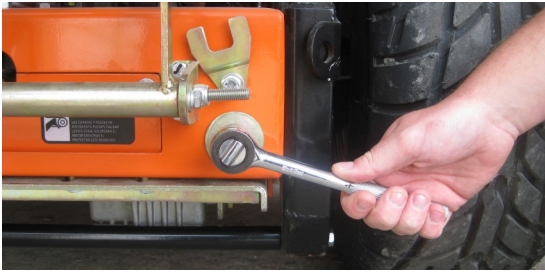
- To adjust the belt, turn the nut on the threaded tension rod found on the right, rear corner of the mower.
- Do not over-tighten. This could cause damage to the hydraulic drive systems.
- The hydro input belt is an 8PK 1690 multi ribbed v belt.



Hydro System Adjustment

The hydrostatic drives are coupled to the output drives with a multi-v belt. Occasional re-tensioning of the belt may be necessary. If performance decreases or hydro control handles are activated and the wheels do not turn, inspect the multi-v belt. **Before beginning the following test, read all warnings in this manual. If you are uncomfortable with this procedure please contact GXi to be set up for service.**

1. Adjust the hydro adjustment bolts by tightening the two large 21mm nuts on the rear of the mower. Tighten the final drive belt so there is approximately 3/4" belt deflection in the center of the belt with about 10lbs of pressure applied.

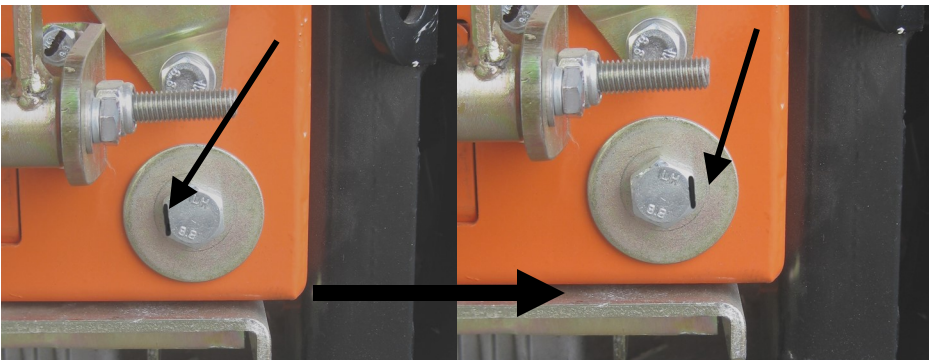


The next step is to perform a "wall test." Drive the mower against a padded stationary object. For accurate results, a smooth brushed concrete surface works best. Stand next to the mower with one hand on the seat. Start the mower with one hand on the seat to engage the safety switch. Engage the left side handle into drive position. Quickly move the handle to full forward position for about half a second. Now perform the same procedure on the right side. If the belt squeals and the wheel does not spin on either side, tighten the hydro adjustment bolt a **half turn** on each side at the same time.



Repeat the test until both tires will break traction and spin.

Once you have the tension set so each wheel will just barely break traction, mark the bolt on one side of the hex head as shown. Now loosen the bolt (turn counter-clockwise) half of a rotation, so the mark is now on the other side. This will set tension so the belt does not squeal, and provides ample torque for driving and mowing without causing belt or hydro damage.



Now drive the mower on a grassy surface. Perform several Zero Turns. Drive the unit aggressively. If the performance is "sloppy" or you have excessive belt chirping, **tighten** the bolt 1/6th of a rotation and re-test. Re-Install the hydro retainer clips after adjustments.

If the mower is too nimble, or you want to reduce the power output to prevent damage to the turf, **loosen** the bolt 1/6th of a rotation and re-test. Occasional belt chirping is permitted. If the belt squeals excessively tighten 1/6th of a rotation and re-test.

Safety System Adjustments



WARNING: Do not bypass, modify, alter, or disconnect the safety system. Make sure that the safety interlock system is fully operational each time before mowing. Failure to do so could present danger to you and others around you.

There are generally three (3) ways to adjust the sensitivity of a safety switch. The most appropriate way to adjust each switch depends upon the application, location, and the nature of the problem you are encountering.

Method 1: Adjust location using the mounting screws

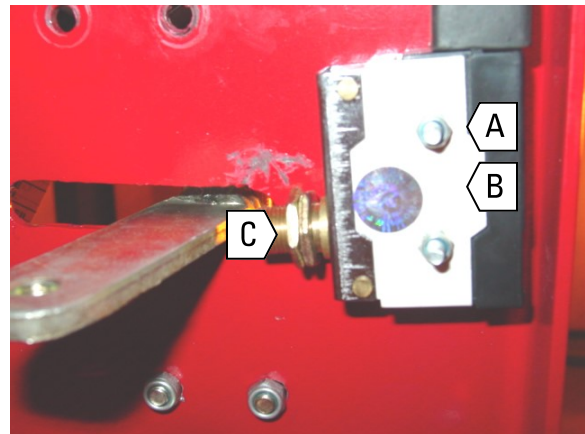
1. Move the blade control lever to OFF.
2. Loosen screws (A) until safety switch (B) moves freely.
3. Slide safety switch (B) firmly against blade bell crank (C).
4. Tighten screws (A) and check that safety switch (B) does not move.

Method 2: Adjust location using adjustment nuts on switch body

1. Loosen locking nut (C) on the sensor shaft.
2. Adjust switch location by turning the nuts.
3. Tighten the locking nut when proper adjustment is achieved.

Method 3: Relocate mounting holes

In rare cases where the components become misaligned, the easiest means of adjusting the location is to elongate the existing holes or add new holes to achieve a tighter fit between the activation rod and the sensor.



To ensure proper lubrication of moving parts, GXi recommends that you lubricate the following components with a high-quality, EP2 high-temperature-based grease or equivalent. Should the conditions of operation be more severe than normal, the lubrication interval may need to be shortened. GTR/OPE grease is the recommended lubricant.

Lubrication Point Locations

The 48-inch mower has mowers have 5 lubrication points.

Lubricate after every 50 hours of usage

1. Front wheels (2 locations, 1 on each wheel shaft)



2. Clutch Pulley Pivot Arm (1 location on the 48-inch deck).



Note: The lower spindle bearing is sealed on the bottom and open on the top. The upper spindle bearing is sealed on both sides. Failure to frequently replenish grease will cause premature lower bearing failure. Frequent application of grease to this bearing is critical to achieving long spindle life in harsh duty environments.

3. Mower deck clutch pulley pivot



Changing Battery

When disconnecting the battery make sure to disconnect the negative terminal first and the positive last. When reconnecting, connect the positive first and the negative last.



Charging Battery

Always charge battery in an open well ventilated area, away from sparks and flames. Unplug charger before connecting or disconnecting from battery and always wear protective clothing and use insulated tools.



DANGER: Battery electrolyte has sulfuric acid which can cause severe burns and is a deadly poison. Never drink and always avoid contact by wearing gloves and safety glasses when servicing the battery.



WARNING: Do not allow battery terminals to touch any metal parts of the mower when removing the battery. Never allow metal tools to short between the battery terminals and metal parts of the mower as this may cause sparks. Sparks can also cause the battery gasses to explode which can result in injury/death.

Short Term Storage

- Let engine cool before storing and do not store near flame, high heat, and possible ignitions from sparks.
- Always clean off all flammable material as well as grime and dirt before storage.
- Never use a pressure washer and avoid drenching the control panel, motor, engine, and hydro pumps with water.
- Wash with mild detergent and water only.
- After washing the machine engage the engine at high and let the mower run for 5 minutes.
- Shut off fuel for storing or transporting.
- Carefully release pressure from components with stored energy.
- Store mower only on the ground.
- Do not drain fuel indoors or near a flame.
- Use jack stands to support components when required.
- Always park machine on level ground and set the parking brake when storing.
- Store the machine in a clean and dry environment.
- Always remove the key from the ignition.
- Add a petroleum based conditioner in the gas tank and run for 5 minutes to distribute through mower.

Extended Storage

- Change air filter.
- Make sure all fuel is drained before storing.
- To ensure all fuel is drained from the mower, run the mower until it runs out of gas before storage.
- Check the spark plugs condition and pour two tablespoons of engine oil in the spark plug holes and leave the spark plug wire off.
- Cover the machine when in storage.
- Remove Battery and clean terminals and cable connectors. Store battery in a cool dry place.
- Everything mentioned in short term storage should also be applied to extended storage.

Problem	Possible Causes	Solution
Engine will not start	<ol style="list-style-type: none"> 1. Key in the OFF position 2. Insufficient fuel in the tank 3. Air bubble in the fuel line 4. Fuel valve in OFF position 5. Choke not ON 6. Choke linkage out of adjustment 7. Low engine oil 8. Blade control in ON position 9. Loose spark plug wire 10. Fouled spark plug 11. Plugged or dirty air filter 12. Bad gasoline 13. Plugged or dirty fuel filter 14. Safety switches out of alignment or loose 15. Dead battery (electric start models) 	<ol style="list-style-type: none"> 1. Turn key to ON position 2. Add gasoline 3. Prime engine or shake bubble out 4. Turn valve ON 5. Turn choke ON 6. Refer to Engine Owner's Manual 7. Add engine oil 8. Push lever to OFF position 9. Tighten wire or connections 10. Clean or replace the plug 11. Clean or replace the air filter 12. Drain and replace with fresh gasoline 13. Replace the fuel filter 14. Adjust or tighten switches (p. 18) - read warnings! 15. Recharge or replace battery
Engine will not keep running/quits	<ol style="list-style-type: none"> 1. Water in the fuel 2. Loose safety switch 3. Fuel valve is OFF 4. Dirty fuel filter 5. Dirty air filter 6. Low engine oil 	<ol style="list-style-type: none"> 1. Drain and replace with fresh fuel 2. Adjust switch (p. 18) 3. Turn fuel valve ON 4. Replace fuel filter 5. Clean or replace air filter 6. Add engine oil
Engine stops when blades are engaged	<ol style="list-style-type: none"> 1. Loose safety switch 2. Belt tension too high 3. Blades jammed with foreign material 	<ol style="list-style-type: none"> 1. Adjust switch (p. 18) 2. Adjust belt (p. 15) 3. Remove foreign material <p>Note: Firmly pushing the blade control lever into the OFF position to ensure the safety switch is fully engaged can sometimes resolve this problem.</p>
Blades do not turn	<ol style="list-style-type: none"> 1. Broken belt 2. Loose belt 3. Blade activation linkage out of adjustment. 	<ol style="list-style-type: none"> 1. Replace belt 2. Adjust belt (p. 15) 3. Adjust linkage (p. 16)
Belts squeal when blades are engaged	<ol style="list-style-type: none"> 1. Incorrect belt tension 2. Excessive belt wear 	<ol style="list-style-type: none"> 1. Adjust belt tension 2. Replace belt
Belts slip when blades are engaged	<ol style="list-style-type: none"> 1. Incorrect belt tension 2. Excessive belt wear 	<ol style="list-style-type: none"> 1. Adjust belt tension 2. Replace belt

Problem	Possible Causes	Solution
Mower will not move forward or reverse	<ol style="list-style-type: none"> 1. Brake ON 2. Bypass levers pulled out 	<ol style="list-style-type: none"> 1. Release brake on control panel 2. Ensure bypass pins are retracted
Cannot move mower when the engine is off	<ol style="list-style-type: none"> 1. Bypass not engaged 	<ol style="list-style-type: none"> 1. Pull left and right bypass pins and set them in slots in the chassis (p. 12)
Engine is overheating	<ol style="list-style-type: none"> 1. Dirt in the fuel line 2. Dirty air filter 3. Low engine oil 4. Fouled spark plug 5. Misuse of the mower 6. Dull blades 7. Spindle bearing failure 	<ol style="list-style-type: none"> 1. Replace fuel filter and flush tank 2. Clean or replace the air filter 3. Add engine oil 4. Replace spark plug 5. Mow slower, wait for grass to dry out 6. Sharpen cutting blades 7. Take in for service
Grass not cut smoothly or cleanly	<ol style="list-style-type: none"> 1. Dull blades 2. Mowing too fast for conditions 3. Grass is wet or bent over 4. Blade is bent 5. Tire pressure not equal 6. Deck is set at uneven heights 7. Blades are set upside down 8. Excessive grass and debris build up underneath the deck 	<ol style="list-style-type: none"> 1. Sharpen blades 2. Slow down while cutting 3. Let grass dry to stand up 4. Replace blade 5. Add air pressure to low tires 6. Set deck at equal heights 7. Take blades off and install correctly 8. Clean out debris
Mower always pulls to one side	<ol style="list-style-type: none"> 1. Controls out of adjustment 2. Transmission failure 	<ol style="list-style-type: none"> 1. Adjust controls (p. 12) 2. Take in for service

Products Covered by this Warranty	Length of Warranty: *(from the date of original retail purchase)		
	Noncommercial/ Nonrental	Commercial	Rental
Engine	Manufacturer's warranty	Manufacturer's warranty	Manufacturer's warranty
Transmission	Manufacturer's warranty	Manufacturer's warranty	Manufacturer's warranty
Mower deck/spindles/pulleys/ controls	24 months	90 days	90 days

*LENGTH OF WARRANTY: Batteries supplied with applicable products as standard, original equipment are covered by this warranty for a period of 90 days from the date of original retail product purchase. Consumable parts such as oil, spark plugs, filters, and blades are not covered by this warranty.

To Qualify for this Warranty

The product must be purchased in the United States from a dealer authorized by GXi Outdoor Power, LLC to sell those products. This warranty applies to first retail purchaser/owner during the applicable warranty time period. **SAVE YOUR PROOF OF PURCHASE RECEIPT. MUST HAVE PROOF OF PURCHASE TO OBTAIN WARRANTY.**

What GXi Outdoor Power Will Repair or Replace under Warranty

GXi will repair or replace, at its option, any part that is proven to be defective in material or workmanship under normal use during the applicable warranty time period subject to the exclusions stated herein. This warranty is void if the owner fails to follow the prescribed maintenance and operating procedures described in this manual. This specifically refers to ensuring routine lubrications and oil changes are made, that fuel stabilizer is used when the product is stored and that the product is not overloaded.

GXi has the right to recover warranty administration costs from the owner if the root cause of the malfunction is found to be other than defective material or workmanship. In particular, this warranty does not cover: contaminants in the fuel or oil; damage caused by not following the prescribed warnings and operating practices; failure to follow proper maintenance and storage procedures; and physical damage due to misuse, shipping, handling or storage.

Warranty repairs will be made without charge for parts and labor for the first year.

Anything replaced under warranty becomes the property of GXi. Parts replaced under warranty will be considered as part of the original product and any warranty on those parts will expire coincident with the original product warranty.

To Obtain Warranty Service

You must take the BEAST product, accessory, replacement part, apparel or the power equipment on which the accessory or replacement part is installed, and proof of purchase, at your expense, to any BEAST service location in the United States, who is authorized to service that product, during the service location's normal business hours. If you are unable to obtain warranty service, or are dissatisfied with the warranty service you receive, take the following steps: First, contact the manager of the service center involved; normally this will resolve the problem. However, if you should require further assistance, write or call the GXi Parts & Service, LLC 1-919-550-3221. You are responsible for transporting your BEAST product to and from the service center. GXi Parts & Service can arrange for pickup and delivery if the service center provides this service, at your expense.

Exclusions

This warranty does not cover: normal wear, contaminants in the fuel or oil; damage as a result of use in an application for which the product was not designed; damage caused by incorporation or use of unsuitable attachments or parts, unauthorized alteration, or other misuse and neglect; damage caused by failure to follow the prescribed warnings, operating practices, proper maintenance and storage procedures; parts affected or damaged by accident and/or collision; damage due to shipping, handling, storage or any causes other than defects in material or workmanship of the product. The customer is responsible for transporting the mower to the service center. Pick Up & Delivery will depend on if the service center provides this service, and will be made at the owner's expense.

Disclaimer of Consequential Damage and Limitation of Implied Warranties

GXi disclaims any responsibility for loss of time or use of the product, transportation, commercial loss, or any other incidental or consequential damage. Any implied warranties are limited to the duration of this written limited warranty.

THIS WARRANTY IS VOID IF THE MANUFACTURING DATE AND THE SERIAL NUMBER ON THE EQUIPMENT HAS BEEN REMOVED OR THE EQUIPMENT HAS BEEN MODIFIED.