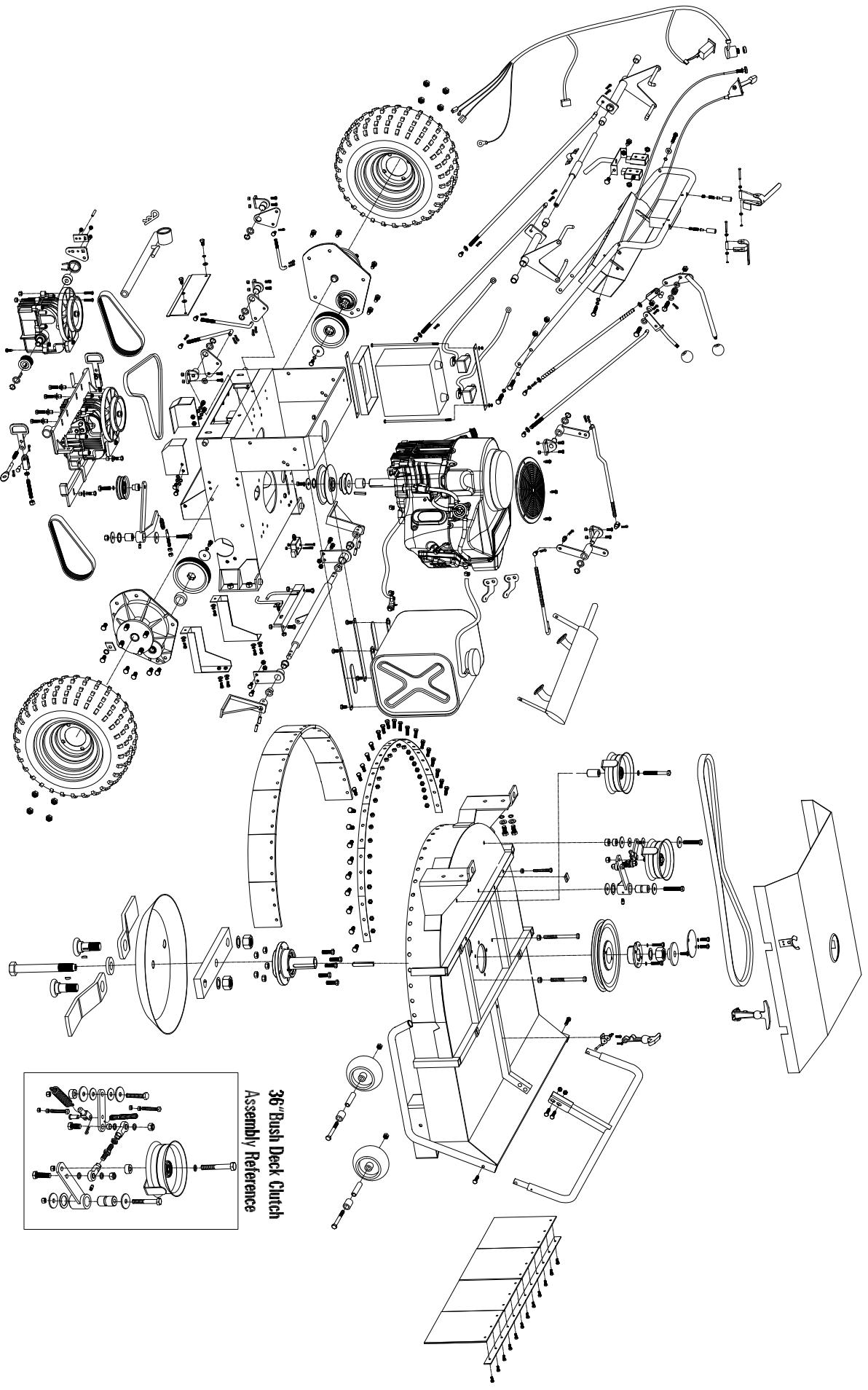


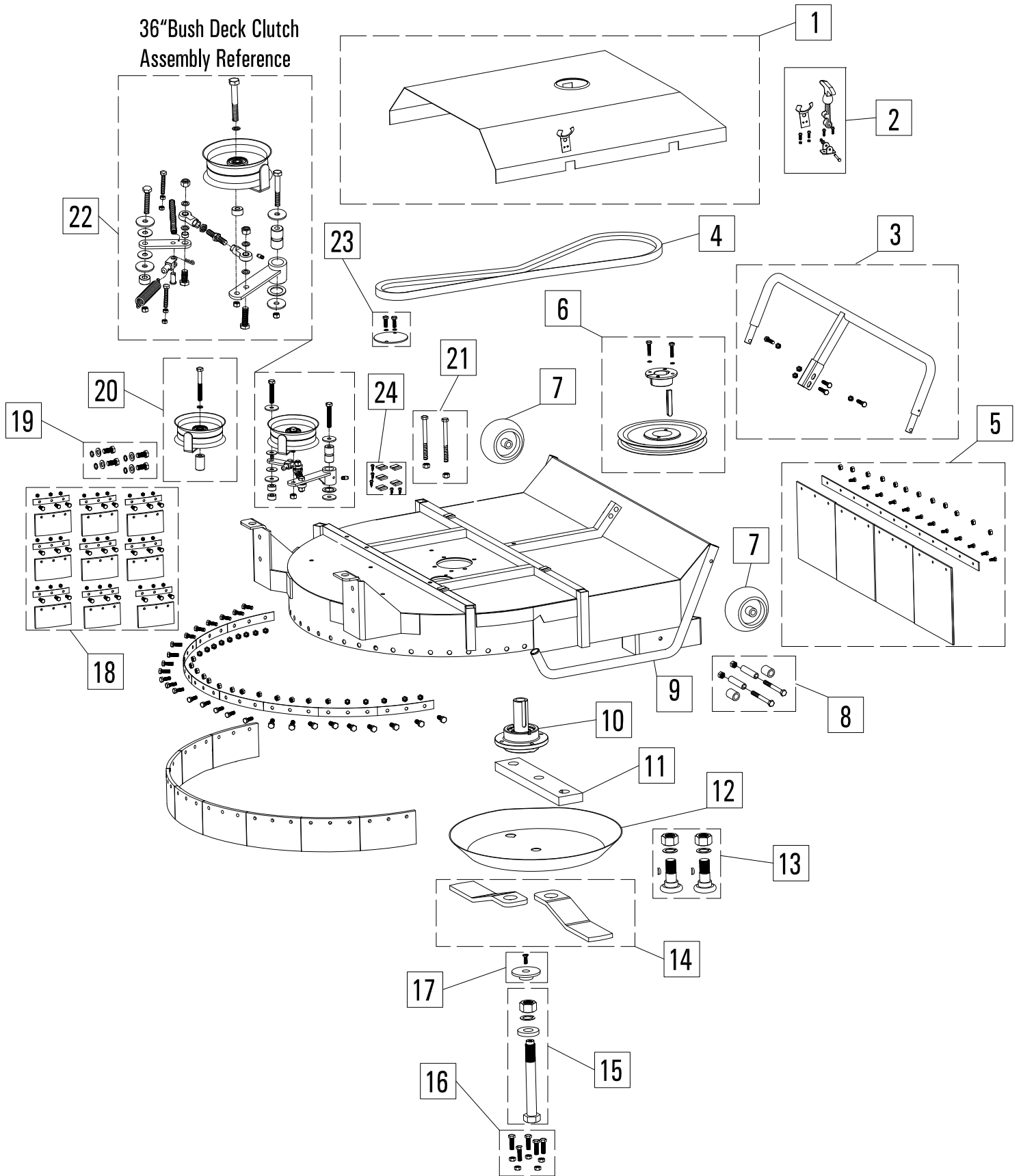
# 36BB Parts Assembly Reference



36" Bush Deck Clutch  
Assembly Reference

# 36" Bush Deck Parts Diagram

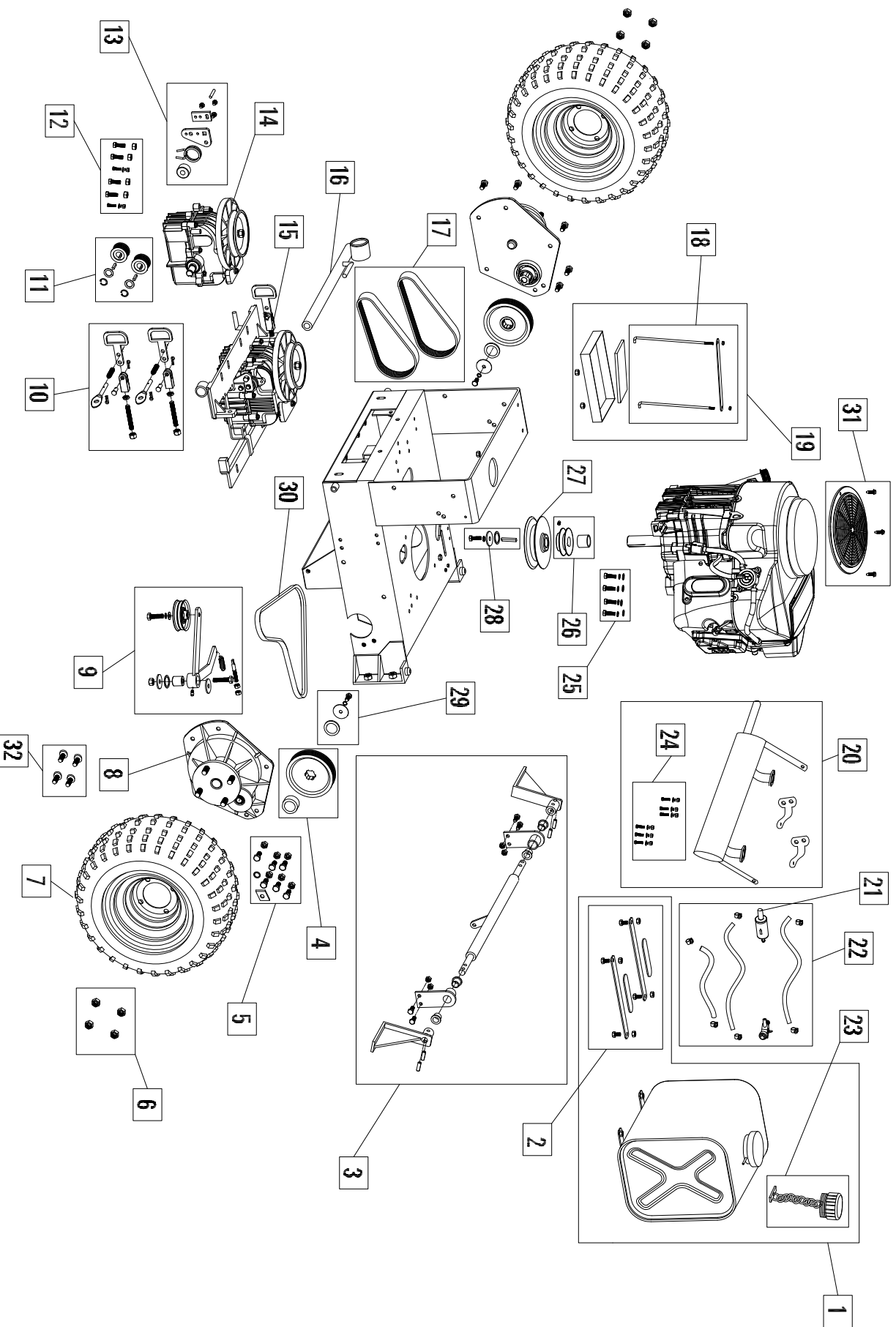
## 36" Bush Deck Clutch Assembly Reference



## Parts Illustrations

<b>36 BB" Deck Parts Diagram -Deck Diagram Key</b>		
<b>Item #</b>	<b>Gxi Part Number</b>	<b>Description</b>
1	SP12-000269	Guard assembly brush mower deck - BEAST, with labels and T handle hooks...
2	SP12-000229	Rubber T-handle, 54Z, 62Z, 36B for guard fastening, with receiver and hardware..
3	SP12-000275	Brush deck, 36", push bar assembly, orange, include deck push bar, hardware..
4	M10-001200	Belt, main deck belt, 36B, MXV5-800...
5	SP11-000080	36BB Front Rubber Guard beast kit..
6	SP12-000277	Pulley, 36" Brush, deck pulley and taper lock bushing and hardware....
7	M10-000458	Scalping wheel, 5" plastic..
8	SP12-000278	Hardware kit, use for 36" Brush, scalping wheel, set of 2 bolts, washers, locking nuts, and bushings..
9	M10-001465	Brush mower deck, orange..
10	M10-001315	Brush steel spindle assembly..
11	M10-001320	Brush blade carrier bar, 36B..
12	M10-001321	Brush mower stump jumper..
13	SP12-000279	Brush blade mount kit, set of 2,include woodruf key, lock washer, blade nut ,blade mounting stwd
14	SP12-000280	Brush mower blade kit, set of 2....
15	SP12-000281	Hardware kit, brush mower ,include blade bolt, washer, spacers, and nut.....
16	SP12-000282	Hardware kit, 36" brush, spindle fastening, set of 5 bolts and nylon nuts
17	SP13-000363	Brush nylon warning disk assembly kit, with BEST label and hardware....
18	SP12-000308	Brush mower deck rear rubber guard assembly kit, include9 piece rubber guard, 9 guard strap, hardware..
19	SP12-000284	Hardware kit, W, connect deck to chassis.....
20	SP11-000085	Idle pulley, 5", includes bolt, locking nut, belt retainer, spacer, and reinforcement washer for necessary applications
21	SP12-000285	Belt retainer kit, 36" Brush, with hardware.....
22	SP11-000060	Clutch assembly, commercial Z, W, complete clutch mechanism with all hardware and springs...
23	SP12-000286	blade access hole cover kit , black, 36", Brush, with hardware..
24	SP12-000271	Pulley cover pads, commercial Z with screws to fasten to deck

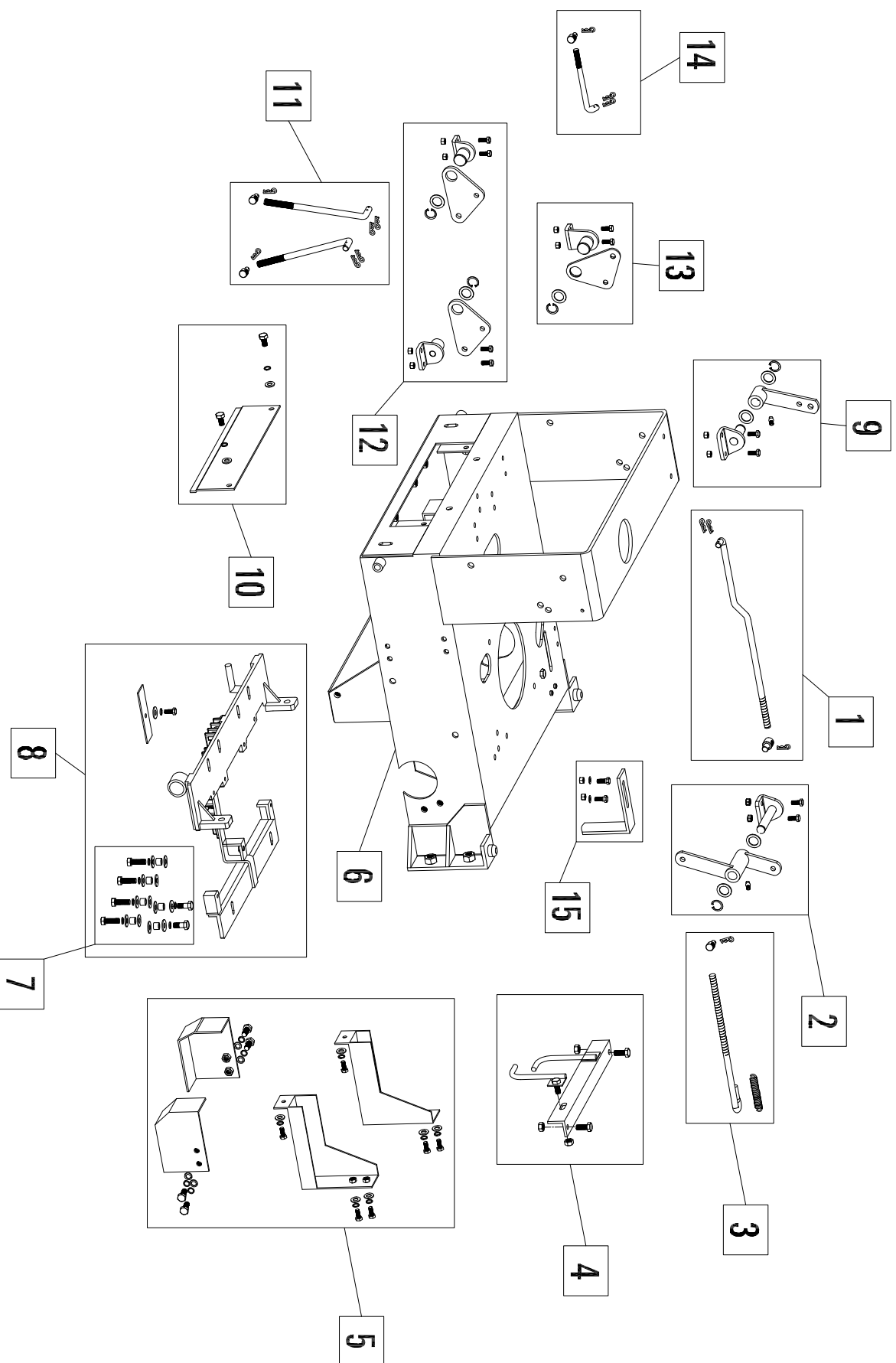
# 36BB Chassis Diagram - Power Train Diagram



## Parts Illustrations

<b>36BB" Chassis - Power Train Diagram Key</b>		
<b>Item #</b>	<b>Gxi Part Number</b>	<b>Description</b>
1	SP12-000287	Steel fuel tank assembly, W, Include fuel valve, mount bar, tethered fuel cap,hardware .....
2	SP12-000288	Steel fuel tank mount bar kit, 36", W, with hardware..
3	SP13-000364	Brake system assembly kit, 36FB,36BB,orange, include brake shaft, brake pivot mount, brake L and R brcket , nylon bushing, spring pin, hardware .....
4	SP12-000290	Pulley, final drive, W, splined bore, 6PK, steel....
5	SP11-000114	Hardware kit, Z, W, final drive mounting hardware to chassis..
6	SP12-000214	Hardware kit, 54Z, 62Z, W, lug nuts 1/2" x 20 thread, set of 4..
7	SP11-000052	Tire assembly, 36", brush rear tire mounted to rim, turf tread 16" x 6.5" x8" tire
8	M10-001351	36 walk behind final drive assembly
9	SP12-000267	Hydro input belt tension assembly, 36B_, 36F_, with hardware
10	SP11-000075	Hydro output belt tension kit, W, include tension pin, handle bar, clevis pin, stud bolt, engage spring,hardware, set of 2..
11	SP12-000147	Pulley assembly, hydro output, W, 6PK, contains 2 pulleys, keys, snap rings, washers.
12	SP11-000119	Hardware kit, Z, W, hydro carrier to chassis fastening hardware..
13	SP11-000038	Hydro return to neutral assembly, W, includes washer, spacer, spring, hydro control arm , pin, hardware....
14	2100-006B	Walk behind hydro, Peerless 2100-006B, integrated pump motor..
15	2100-007B	Walk behind hydro, Peerless 2100-007B, integrated pump motor..
16	M10-001259	Free Wheel Tool ..
17	SP12-000273	Belt, final drive, W, 6PK722, use for 36" walk behind mower, set of 2
18	SP13-000109	Battery tie down kit, W, includes tie down posts, strap, and hardware..
19	SP12-000291	Battery pan kit, W, includes tie down posts, strap, and hardware..
20	SP12-000211	Muffler, 54ZB, 36BB, 36FB, 54FB, 100TB, Subaru EH65V, 22hp, with hardware and gaskets..
21	M10-000535	fuel filter..
22	SP11-000105	Fuel system kit, Z, fuel supply line, fuel valve, filter, fuel tank breather line, and 6 hose clamps..
23	M10-001409	Fuel tank cap, for steel tank, plastic, with tether, sealed
24	SP12-000216	Hardware kit, lug stud, press fit, commercial Z, W, 1/2" x 20' thread, set of 4..
25	SP12-000212	Hardware kit, engine mounting bolts, 54ZB Subaru EH65V Engine
26	SP12-000293	Pulley, engine, hydros, V belt, W, with spacer and set screw
27	M10-001269	Pulley, engine - deck belt, 36", W, 1" bore, with keyway, black, cast
28	SP11-000107	Hardware kit, engine pulley retaining hardware, Z, W, key, washers, lock washer, bolt
29	SP11-000112	Hardware kit, Z, W, final drive input pulley hardware, includes washers, bolt, lock washer, shims, use Loctite during assembly on bolt threads..
30	M10-001203	Belt, hydro input, 36, MXV4-440

# 36BB Chassis Diagram-Components Diagram



## Parts Illustrations

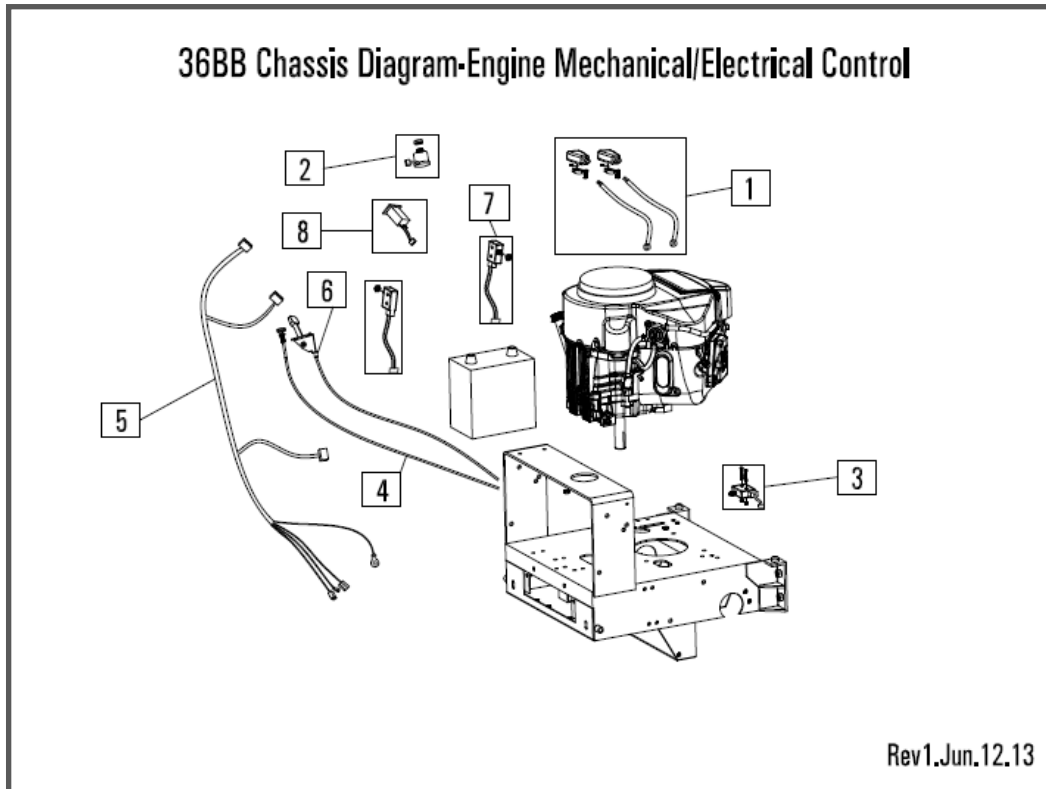
<b>36 BB" Chassis Diagram -Components Diagram Key</b>	
<b>Item #</b>	<b>Gxi Part Number</b>
<b>Description</b>	
1	SP12-000294
Chassis blade rod kit, 36B,36F, include blade rod, cotter pin, threaded rod end..	
2	SP11-000069
Blade belt tension pivot arm assembly, 36B,36F, include M6 grease fitting, tension pivot mount, washer, snap ring,	
3	SP12-000257
Rod kit, deck engagement, Z, included threaded rod end and cotter pin	
4	SP12-000295
Movable retainer connector assembly, 36B,36F,with hardware..	
5	SP12-000296
Front and rear multi pulley guard kit ,include left and right ,36FS,36BS, black, with hardware..	
6	M10-001458
Chassis, 36" walk behind, Beast orange	
7	SP11-000119
Hardware kit, Z, W, hydro carrier to chassis fastening hardware..	
8	SP12-000309
Hydro carrier kit, 36B,36F, includes center reinforcement, and hydro carrier to chassis fastening hardware...	
9	SP11-000070
Blade belt tension pivot arm assembly, 36B,36F,54F include M6 grease fitting, tension pivot mount, washer, snap	
10	SP11-000073
Rear access cover assembly kit, chassis,36BS,36FS, black, with hardware and labels....	
11	SP12-000297
Rod kit, hydro control, W, left and right rods, threaded rod ends, and cotter pins..	
12	SP12-000310
Hydro control pivot assembly kit, W, include pivot mount, pivot arm L and R, washer, snap ring, hardware..	
13	SP11-000068
Brake mounting and pivot arm assembly , include pivot arm , brake mounting, washer, snap ring, hardware..	
14	SP12-000298
Chassis brake rod kit, 36B,36F,54F, include brake rod, cotter pin, threaded rod end..	
15	SP12-000313
Engine belt retainer assembly,36F, 36B, include hardware and belt retainer...	

## Parts Illustrations

<b>36 BB" Handle Bar Diagram Key</b>		
<b>Item #</b>	<b>Gxi Part Number</b>	<b>Description</b>
1	SP12-000299	OPS handle assembly kit, W, include bushing, lift pins, OPS handle, handle pin, spring, E- ring , hardware..
2	SP12-000300	Park brake rod kit, W, include brake rod, threaded rod ends, and cotter pins..
3	SP12-000301	Rod kit, W, intermediate control between handle and rear control assembly, includes long shaft threaded rod ends, and pins..
4	SP12-000302	Handle bar blade rod kit, W, include threaded rod end, cotter pin, U bracket and U bracket end, hardware..
5	SP13-000365	Handle Bar For 36 Walk Behind BEAST Assembly..
6	SP12-000303	Hardware kit, W, use for handle bar connection to chassis..
7	SP12-000305	V-bar control handle assembly kit, 36F,36B, include nylon bushing, shaft, hardware..
8	SP11-000053	Brake handle assembly, W, include plastic sphere knob, cone spacer, handle , hardware..
9	SP12-000306	Blade handle assembly, W, include plastic sphere knob, cone spacer, handle , hardware..
10	SP12-000307	Switch box bottom kit, black, W, include switch box, harness clip, hardware..
11	M10-001285	Handle Bar Weldment..



## Parts Illustrations



**36 BB" Chassis Diagram-Engine Mechanical/Electrical Control Diagram Key**

Item #	Gxi Part Number	Description
1	SP11-000066	Battery cable set, walk behind, includes terminals, terminal covers, positive and ground battery cables, solenoid to starter cable
2	M10-000539	Switch, 3 position, Z, W, with keys, 3 pin and 2 pin female plastic plug
3	SP12-000304	Switch kit, blade drive interlock, W, with pigtail and male plastic plug with hardware
4	M10-000877	choke cable 1295.4mm..
5	M10-001474	Wiring harness, 36BB, 36FB, 54FB, Subaru EH65V engine
6	M10-000876	throttle cable 1270mm..
7	M10-001386	Switch, walk behind mower, handle bar interlock, Z, W, NC, with pigtail
8	M10-000541	Hour meter, Z, W, with soldered pigtails and female plastic plug