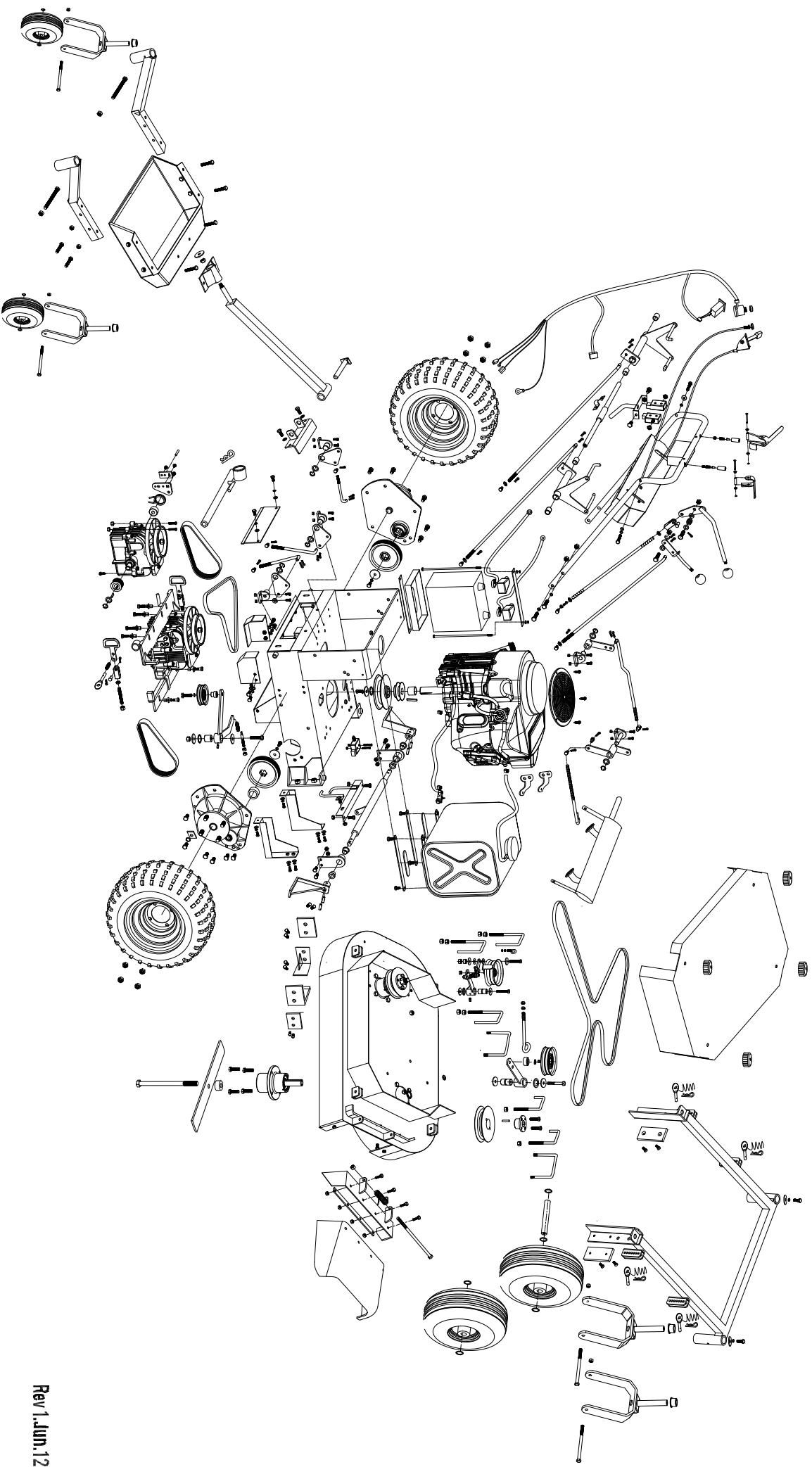
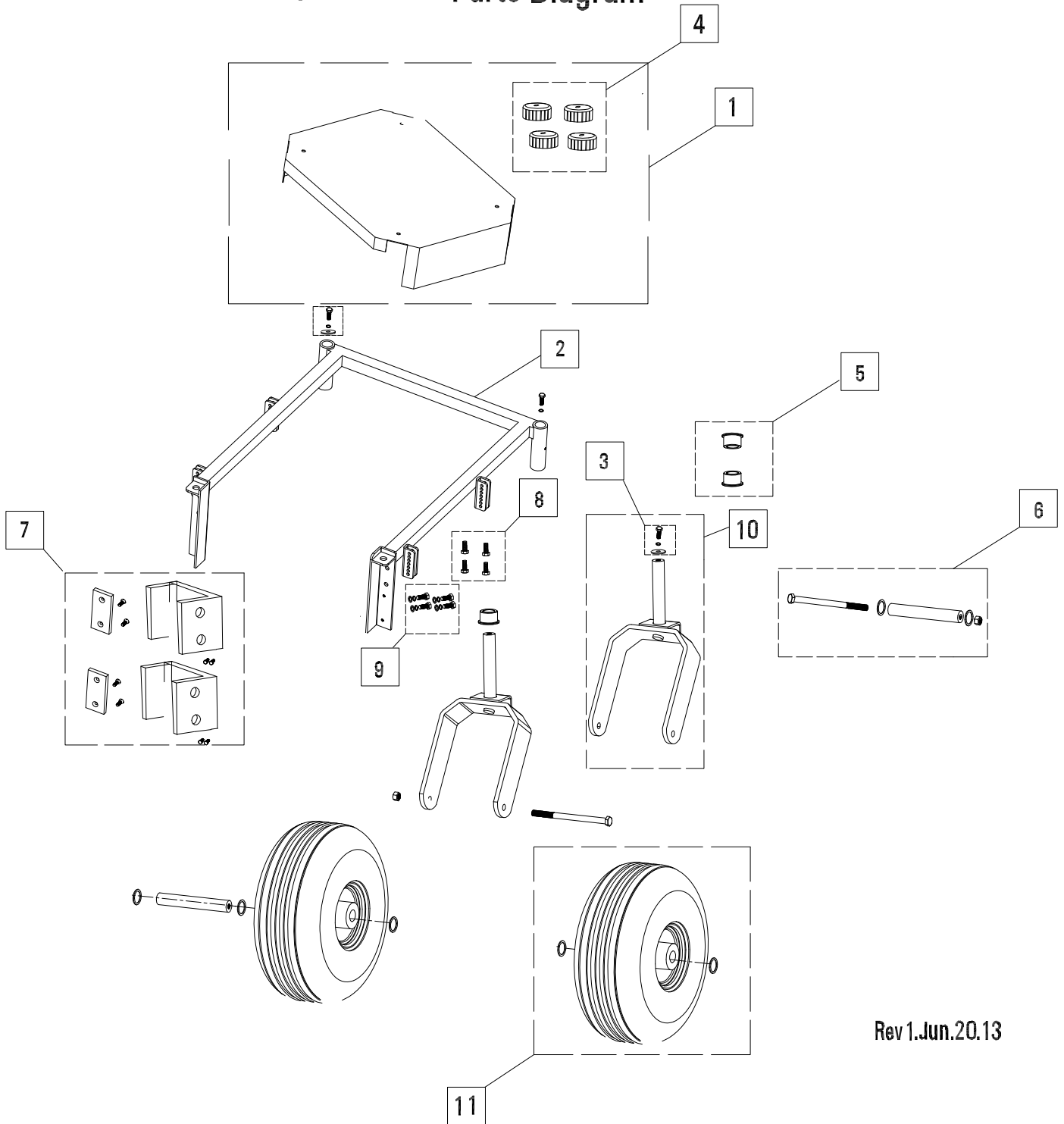


36 FB" Parts Assembly Reference



36FB" Frame Parts Diagram

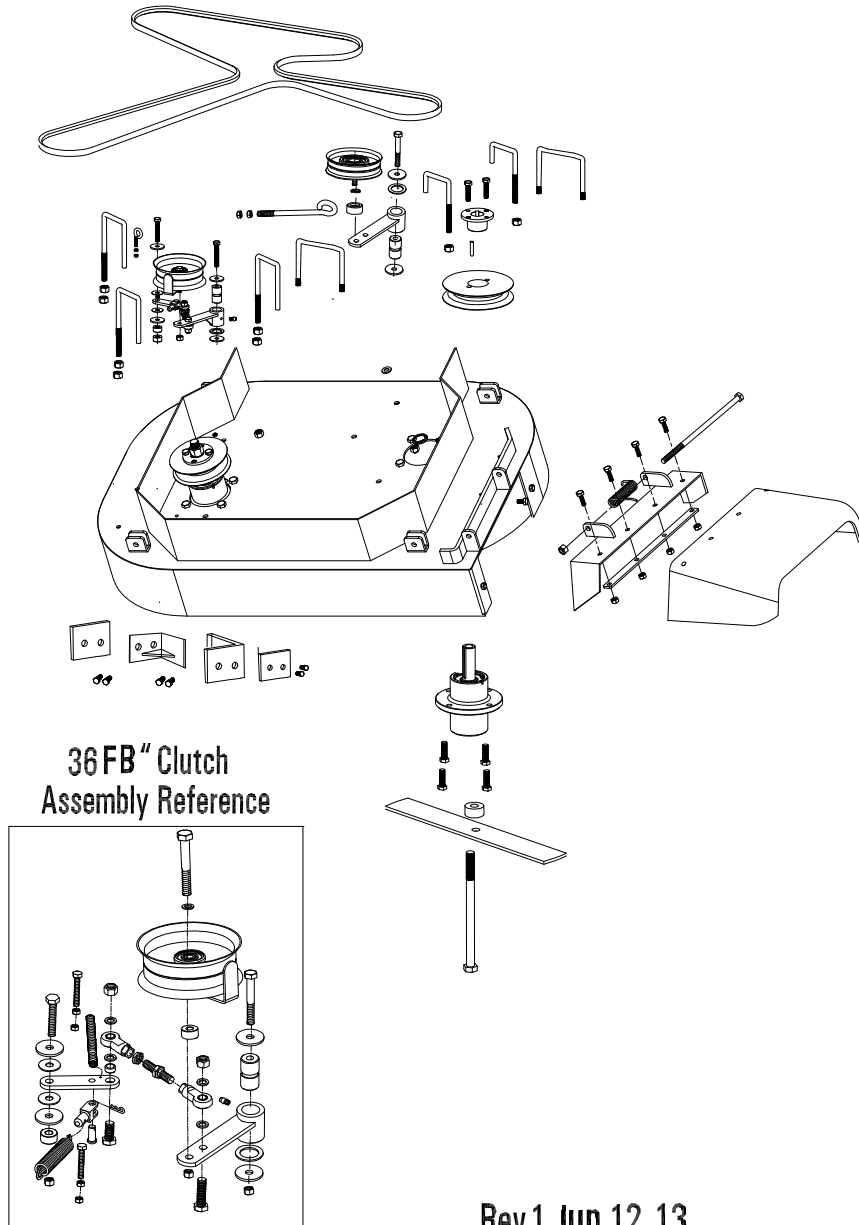


Rev 1.Jun.20.13

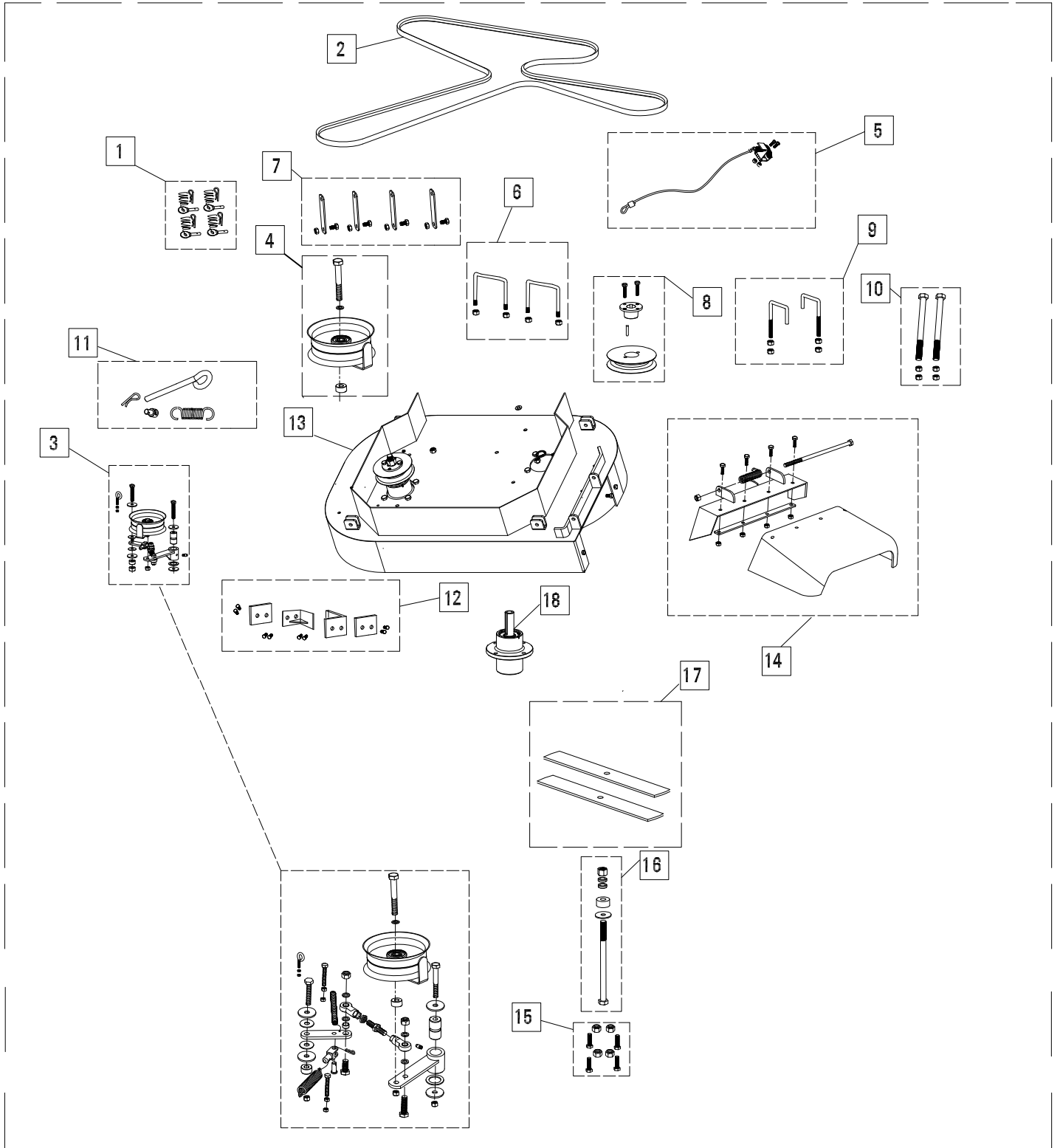
36FB" Frame Parts Diagram Key

Item #	Gxi Part Number	Description
1	SP12-000312	Deck guard assembly, 36FB, grey, include label and four guard knob
2	SP12-000321	Frame assembly, 36FB, orange, include label and four brass bushing installed and reamed for wheel yoke
3	SP11-000140	Hardware kit, Z, W, retaining hardware for front wheel caster, includes, bolt, fender washer, and lock washer
4	SP13-000374	Hardware, guard knob kit, set of 4
5	SP12-000361	Bushing, brass, front wheel caster, w, set of 4
6	SP12-000326	Hardware kit, W, front wheel axle bolt and axle hardware.
7	SP13-000375	Wear pad kit, front to back, w, black, with hardware and nylon wear pads
8	SP12-000341	Hardware kit, W, use for fasten the deck guard
9	SP12-000284	Hardware kit, W, connect deck to chassis..
10	SP12-000328	Front wheel yoke, 36FB, 54FB, orange, with assembly hardware to frame, axle NOT included
11	SP12-000329	Front tire assembly, W, with bearings pressed into rim hub, ribbed 9" x 3.5" x 4" tire

36 FB" Deck Parts Assembly Reference



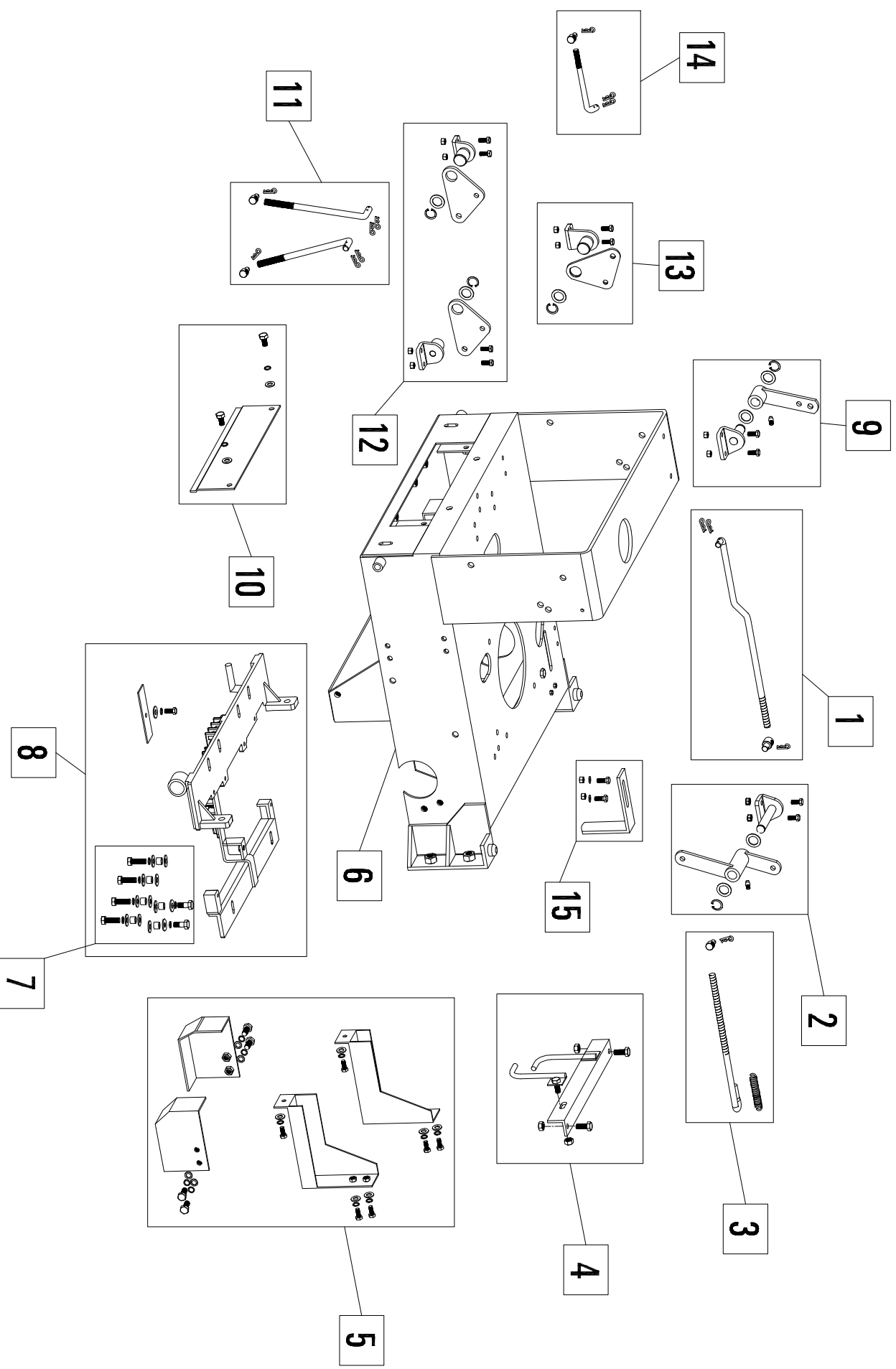
36"FB Deck Parts Diagram



36FB" Deck Parts Diagram -Deck Diagram Key

Item #	Gxi Part Number	Description
1	SP12-000314	Deck height adjustment pin kit, 36F, 54F include pins, rings, cotter pins, tether, set of 4 (C-25/75, P-5/10)
2	M10-001201	36F Deck Belt MXV5-880 (C-50/100, P-15/30)
3	SP12-000325	Deck clutch assemblies for 36F/54F– including spring and connection to clutch arm
4	SP11-000085	Idle pulley, 5", includes bolt, locking nut, belt retainer, spacer, and reinforcement washer for necessary applications (C-50/100, P-25/50)
5	SP13-000366	Spindle brake kit, 36F, includes springs, cables and hardware
6	SP13-000367	Deck lift handle, walk behind, vinyl coated with hardware,sets of 2
7	SP13-000376	Deck height bar,36F/54F,orange,set of 4 with hardware
8	SP13-000368	Pulley,36F,deck pulley and taper lock bushing and hardware
9	SP12-000186	Belt retainer kit ,Z,intermediate between engine and deck 2 belt retainers and hardware
10	SP12-000285	Belt retainer kit, 36" Brush, with hardware..
11	SP13-000369	Rod kit deck engagement,36F include threaded rod end and cotter pin
12	SP13-000370	Wear pad kit side to side,W,black, with hardware and nylon wear pads
13	M10-001517	36FB Deck Weldment -orange
14	SP11-000056	Commercial Mower Discharge Chute
15	SP11-000086	Hardware kit, Z, W, spindle fastening, set of 4 bolts and nyloc nuts
16	SP12-000234	Hardware kit, commercial Z, W blade bolt, washer, spacers, and nut
17	SP13-000371	Blade, set of 2, 36F mowers
18	M10-000928	Cast Steel Spindle Assembly
19	SP13-000377	36FB deck assembly , orange, include complete parts to deck

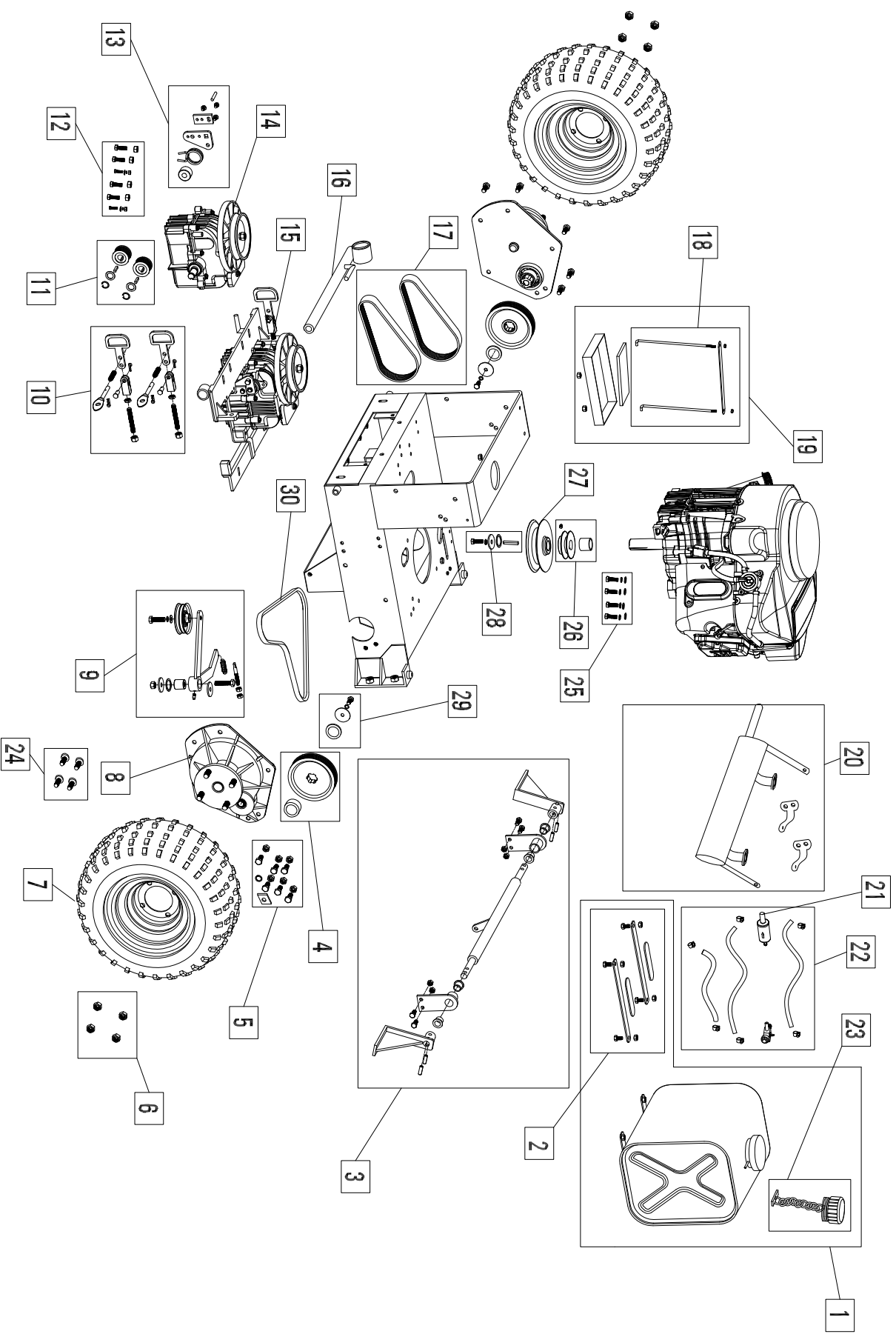
36FB "Chassis Diagram-Components Diagram



36 FB" Chassis Diagram -Components Diagram Key

Item #	Gxi Part Number	Description
1	SP12-000294	Chassis blade rod kit, 36B,36F, include blade rod, cotter pin, threaded rod end..
2	SP11-000069	Blade belt tension pivot arm assembly, 36B,36F, include M6 grease fitting, tension pivot mount, washer, snap ring, hardware..
3	SP12-000313	Engine belt retainer assembly,36F,36B,included hardware and belt retainer
4	SP12-000295	Movable retainer connector assembly, 36B,36F,with hardware..
5	SP12-000296	Front and rear multi pulley guard kit ,include left and right ,36FS,36BS, black, with hardware..
6	M10-001458	Chassis, 36" walk behind, Beast orange
7	SP11-000119	Hardware kit, Z, W, hydro carrier to chassis fastening hardware..
8	SP12-000309	Hydro carrier kit, 36B,36F, includes center reinforcement, and hydro carrier to chassis fastening hardware...
9	SP11-000070	Blade belt tension pivot arm assembly, 36B,36F,54F include M6 grease fitting, tension pivot mount, washer, snap ring, hardware..
10	SP12-000311	Rear access cover assembly kit, chassis,36BB,36FB, black, with hardware and labels....
11	SP12-000297	Rod kit, hydro control, W, left and right rods, threaded rod ends, and cotter pins..
12	SP12-000310	Hydro control pivot assembly kit, W, include pivot mount, pivot arm L and R, washer, snap ring, hardware..
13	SP11-000068	Brake mounting and pivot arm assembly , include pivot arm , brake mounting, washer, snap ring, hardware..
14	SP12-000298	Chassis brake rod kit, 36B,36F,54F, include brake rod, cotter pin, threaded rod end..

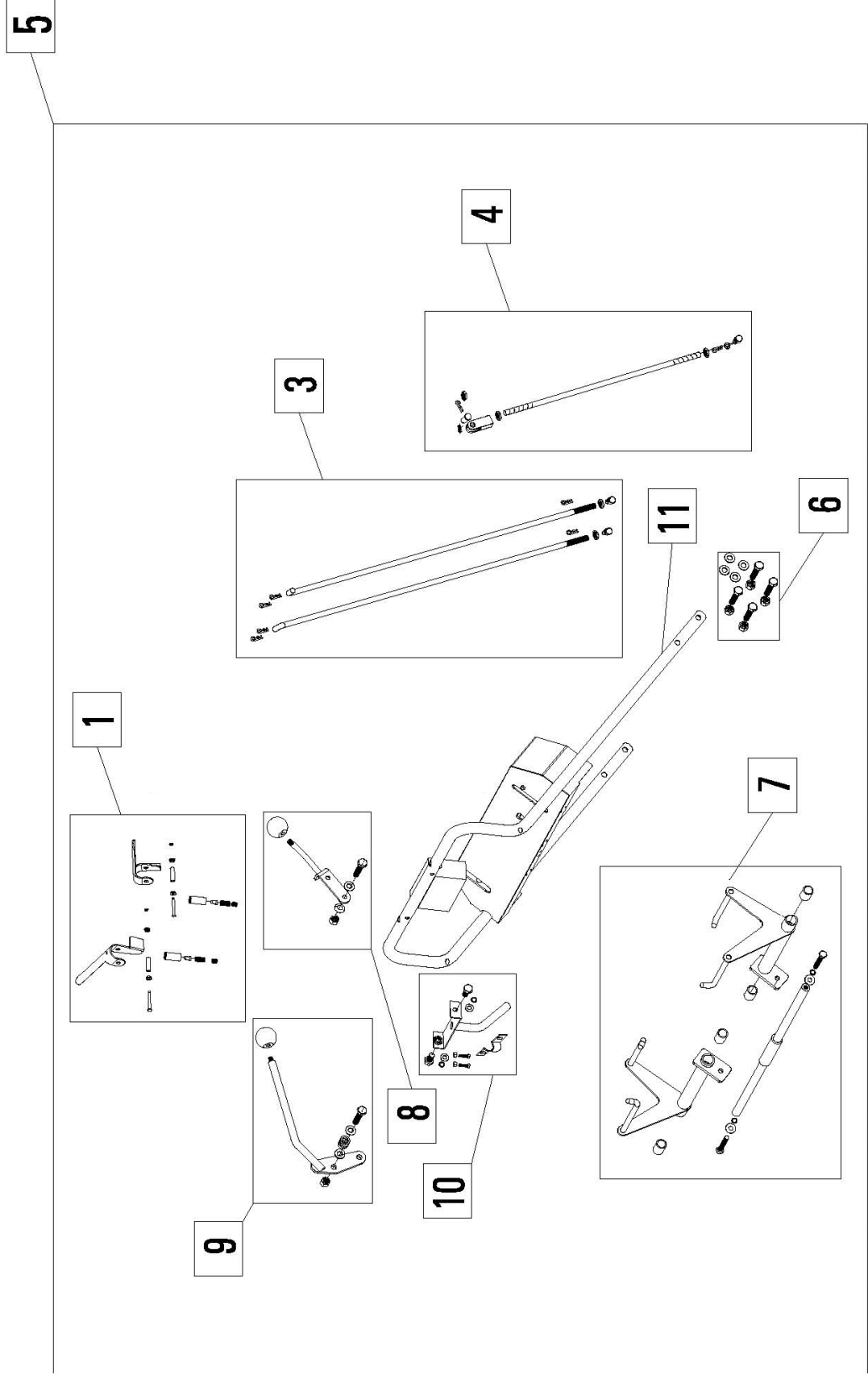
36FB" Chassis Diagram - Power Train Diagram



36FB" Chassis - Power Train Diagram Key

Item #	Gxi Part Number	Description
1	SP12-000287	Steel fuel tank assembly, W, Include fuel value, mount bar, tethered fuel cap,hardware
2	SP12-000288	Steel fuel tank mount bar kit, 36", W, with hardware..
3	SP13-000372	Brake system assembly kit, 36FB,36BB,orange, include brake shaft, brake pivot mount, brake L and R bracket , nylon bushing, spring pin, hardware
4	SP12-000290	Pulley, final drive, W, splined bore, 6PK, steel....
5	SP11-000114	Hardware kit, Z, W, final drive mounting hardware to chassis..
6	SP12-000214	Hardware kit, 54Z, 62Z, W, lug nuts 1/2" x 20 thread, set of 4..
7	SP13-000373	Tire assembly, 36", brush rear tire mounted to rim, turf tread 16" x 6.5" x8" tire
8	M10-001351	36 walk behind final drive assembly
9	SP12-000267	Hydro input belt tension assembly, 36B_, 36F_, with hardware
10	SP11-000075	Hydro output belt tension kit, W, include tension pin, handle bar, clevis pin, stud bolt, engage spring,hardware, set of 2..
11	SP12-000147	Pulley assembly, hydro output, W, 6PK, contains 2 pulleys, keys, snap rings, washers.
12	SP11-000119	Hardware kit, Z, W, hydro carrier to chassis fastening hardware..
13	SP11-000038	Hydro return to neutral assembly, W, includes washer, spacer, spring, hydro control arm , pin, hardware....
14	2100-006B	Walk behind hydro, Peerless 2100-006B, integrated pump motor..
15	2100-007B	Walk behind hydro, Peerless 2100-007B, integrated pump motor..
16	M10-001259	Free Wheel Tool ..
17	SP12-000273	Belt, final drive, W, 6PK722, use for 36" walk behind mower, set of 2
18	SP13-000109	Battery tie down kit, W, includes tie down posts, strap, and hardware..
19	SP12-000291	Battery pan kit, W, includes tie down posts, strap, and hardware..
20	SP12-000211	Muffler, 54ZB, 36BB, 36FB, 54FB, 100TB, Subaru EH65V, 22hp, with hardware and gaskets..
21	M10-000535	fuel filter..
22	SP11-000105	Fuel system kit, Z, fuel supply line, fuel valve, filter, fuel tank breather line, and 6 hose clamps..
23	M10-001409	Fuel tank cap, for steel tank, plastic, with tether, sealed
24	SP12-000216	Hardware kit, lug stud, press fit, commercial Z, W, 1/2" x 20' thread, set of 4..
25	SP12-000212	Hardware kit, engine mounting bolts, 54ZB Subaru EH65V Engine
26	SP12-000293	Pulley, engine, hydros, V belt, W, with spacer and set screw
27	M10-001269	Pulley, engine - deck belt, 36", W, 1" bore, with keyway, black, cast
28	SP11-000107	Hardware kit, engine pulley retaining hardware, Z, W, key, washers, lock washer, bolt
29	SP11-000112	Hardware kit, Z, W, final drive input pulley hardware, includes washers, bolt, lock washer, shims, use Loctite during assembly on bolt threads..
30	M10-001203	Belt, hydro input, 36, MXV4-440

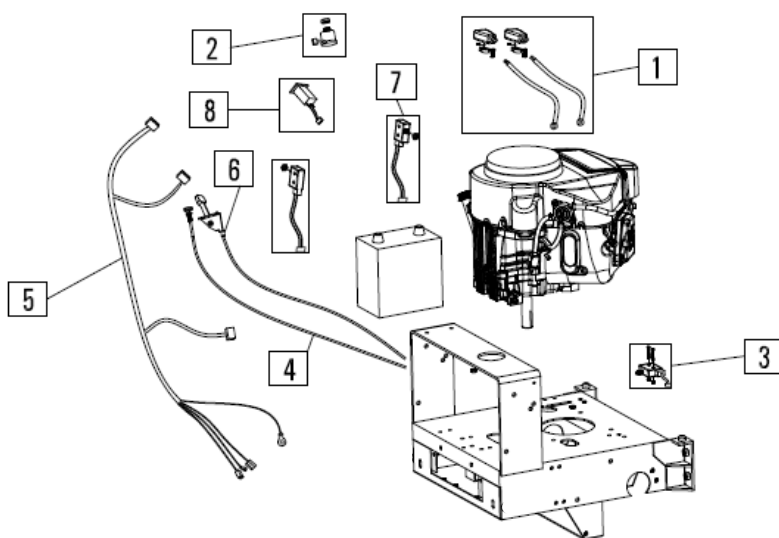
36FB Handle Bar Parts Diagram



36 FB" Handle Bar Diagram Key

Item #	Gxi Part Number	Description
1	SP12-000299	OPS handle assembly kit, W, include bushing, lift pins, OPS handle, handle pin, spring, E- ring , hardware..
2	SP12-000300	Park brake rod kit, W, include brake rod, threaded rod ends, and cotter pins..
3	SP12-000301	Rod kit, W, intermediate control between handle and rear control assembly, includes long shaft threaded rod ends, and pins..
4	SP12-000302	Handle bar blade rod kit, W, include threaded rod end, cotter pin, U bracket and U bracket end, hardware..
5	SP13-000365	Handle Bar For 36 Walk Behind BEAST Assembly..
6	SP12-000303	Hardware kit, W, use for handle bar connection to chassis..
7	SP12-000305	V-bar control handle assembly kit, 36F,36B, include nylon bushing, shaft, hardware..
8	SP11-000053	Brake handle assembly, W, include plastic sphere knob, cone spacer, handle , hardware..
9	SP12-000306	Blade handle assembly, W, include plastic sphere knob, cone spacer, handle , hardware..
10	SP12-000307	Switch box bottom kit, black, W, include switch box, harness clip, hardware..
11	M10-001285	Handle Bar Weldment..

36FB Chassis Diagram-Engine Mechanical/Electrical Control



Rev1.Jun.12.13

36 FB" Chassis Diagram-Engine Mechanical/Electrical Control Diagram Key

Item #	Gxi Part Number	Description
1	SP11-000066	Battery cable set, walk behind, includes terminals, terminal covers, positive and ground battery cables, solenoid to starter cable
2	M13-000539	Waterproof switch, 3 position, Z, W, with keys, 3 pin and 2 pin female plastic plug
3	SP12-000304	Switch kit, blade drive interlock, W, with pigtail and male plastic plug with hardware
4	M10-000877	choke cable 1295.4mm..
5	M10-001474	Wiring harness, 36BB, 36FB, 54FB, Subaru EH65V engine
6	M10-000876	throttle cable 1270mm..
7	M10-001386	Switch, walk behind mower, handle bar interlock, Z, W, NC, with pigtail
8	M10-000541	Hour meter, Z, W, with soldered pigtails and female plastic plug